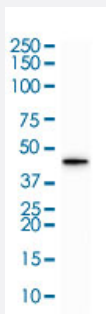


RecomAb™

KRT19 recombinant monoclonal antibody, clone KRT19/1959R

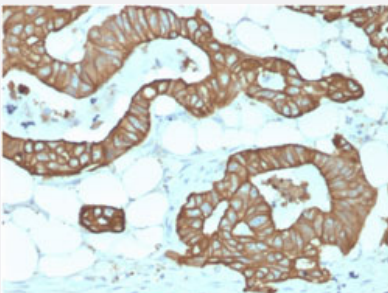
Catalog # RAB00571 Size 100 ug

Applications



Western Blot (Cell lysate)

Western Blot (cell lysate) analysis of HepG2 cell lysate.



Immunohistochemistry (Formalin/PFA-fixed paraffin-embedded sections)

Immunohistochemical staining of human colon.

Specification

Product Description	Rabbit recombinant monoclonal antibody raised against full length human KRT19.
Antibody Species	Rabbit
Immunogen	Recombinant protein corresponding to full-length human KRT19.
Reactivity	Human, Mouse
Form	Liquid
Purification	Protein A/G purification

Isotype	IgG
Recommend Usage	Immunohistochemistry (Formalin/PFA-fixed paraffin-embedded sections) (0.5-1 ug/mL) Western Blot (0.5-2 ug/mL) The optimal working dilution should be determined by the end user.
Storage Buffer	In 1 mg/mL PBS
Storage Instruction	Store at -20 to -80°C.

Applications

- Western Blot (Cell lysate)
Western Blot (cell lysate) analysis of HepG2 cell lysate.
- Immunohistochemistry (Formalin/PFA-fixed paraffin-embedded sections)
Immunohistochemical staining of human colon.

Gene Info — KRT19

Entrez GeneID	3880
Protein Accession#	P08727
Gene Name	KRT19
Gene Alias	CK19, K19, K1CS, MGC15366
Gene Description	keratin 19
Omim ID	148020
Gene Ontology	Hyperlink
Gene Summary	The protein encoded by this gene is a member of the keratin family. The keratins are intermediate filament proteins responsible for the structural integrity of epithelial cells and are subdivided into c ytokeratins and hair keratins. The type I cytokeratins consist of acidic proteins which are arranged in pairs of heterotypic keratin chains. Unlike its related family members, this smallest known acidi c cytokeratin is not paired with a basic cytokeratin in epithelial cells. It is specifically expressed in the periderm, the transiently superficial layer that envelopes the developing epidermis. The type I cytokeratins are clustered in a region of chromosome 17q12-q21. [provided by RefSeq
Other Designations	40-kDa keratin intermediate filament cytokeratin 19 keratin, type I cytoskeletal 19 keratin, type I, 40-kd

Disease

- [Liver Cirrhosis](#)