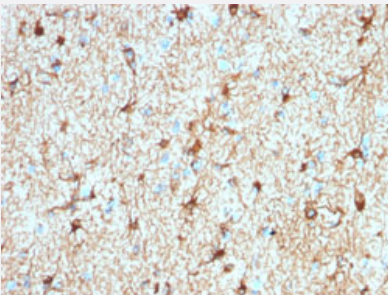


RecomAb™

GFAP recombinant monoclonal antibody, clone ASTRO/1974R

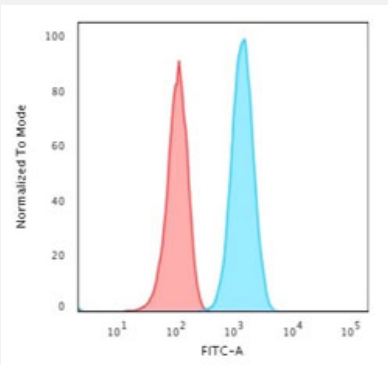
Catalog # RAB00553 Size 100 ug

Applications



Immunohistochemistry (Formalin/PFA-fixed paraffin-embedded sections)

Immunohistochemical staining of human cerebellum.



Flow Cytometry

Flow cytometric analysis of T98G cells. Goat anti-rabbit IgG-CF488 (Blue) ; Isotype Control (Red).

Specification

Product Description	Rabbit recombinant monoclonal antibody raised against full length human GFAP.
Antibody Species	Rabbit
Immunogen	Recombinant protein corresponding to full-length human GFAP.
Reactivity	Bovine, Chicken, Human, Mouse, Pig, Rat
Form	Liquid
Purification	Protein A/G purification

Isotype	IgG
Recommend Usage	Flow Cytometry (1-2 ug/million cells) Immunohistochemistry (Formalin/PFA-fixed paraffin-embedded sections) (0.5-1 ug/mL) The optimal working dilution should be determined by the end user.
Storage Buffer	In 1 mg/mL PBS
Storage Instruction	Store at -20 to -80°C.

Applications

- Immunohistochemistry (Formalin/PFA-fixed paraffin-embedded sections)

Immunohistochemical staining of human cerebellum.

- Flow Cytometry

Flow cytometric analysis of T98G cells. Goat anti-rabbit IgG-CF488 (Blue) ; Isotype Control (Red).

Gene Info — GFAP

Entrez GeneID	2670
Protein Accession#	P14136
Gene Name	GFAP
Gene Alias	FLJ45472
Gene Description	glial fibrillary acidic protein
Omim ID	137780 203450
Gene Ontology	Hyperlink
Gene Summary	This gene encodes one of the major intermediate filament proteins of mature astrocytes. It is used as a marker to distinguish astrocytes from other glial cells during development. Mutations in this gene cause Alexander disease, a rare disorder of astrocytes in the central nervous system. Alternative splicing results in multiple transcript variants encoding distinct isoforms. [provided by RefSeq]
Other Designations	-

Disease

- [Alzheimer disease](#)
- [Cognition](#)