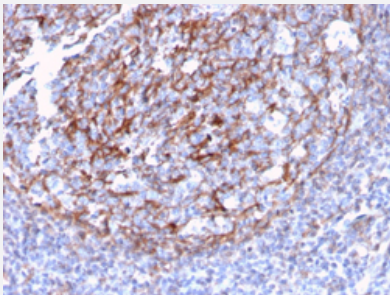


RecomAb™

CR2 recombinant monoclonal antibody, clone CR2/3124R

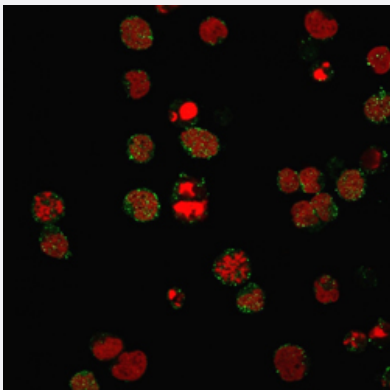
Catalog # RAB00539 Size 100 ug

Applications



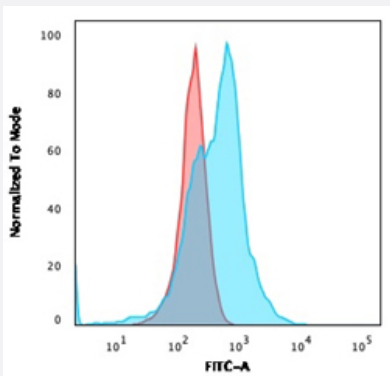
Immunohistochemistry (Formalin/PFA-fixed paraffin-embedded sections)

Immunohistochemical staining of human tonsil.



Immunofluorescence

Immunofluorescent staining of PFA-fixed MOLT4 cells followed by goat anti-mouse IgG conjugated to CF488 (green). Nuclei are stained with Reddot.



Flow Cytometry

Flow cytometric analysis of PFA-fixed MOLT4 cells. Goat anti-mouse IgG-CF488 (Blue) ; Isotype Control (Red).

Specification

Product Description	Rabbit recombinant monoclonal antibody raised against partial human CR2.
Antibody Species	Rabbit
Immunogen	Recombinant protein corresponding to amino acids 142-240 of human CR2.
Reactivity	Human
Form	Liquid
Purification	Protein A/G purification
Isotype	IgG
Recommend Usage	Flow Cytometry (1-2 ug/million cells) Immunofluorescence (1-2 ug/mL) Immunohistochemistry (Formalin/PFA-fixed paraffin-embedded sections) (1-2 ug/mL) Western Blot (0.5-2 ug/mL) The optimal working dilution should be determined by the end user.
Storage Buffer	In 1 mg/mL PBS
Storage Instruction	Store at -20 to -80°C.

Applications

- Western Blot
- Immunohistochemistry (Formalin/PFA-fixed paraffin-embedded sections)
Immunohistochemical staining of human tonsil.
- Immunofluorescence
Immunofluorescent staining of PFA-fixed MOLT4 cells followed by goat anti-mouse IgG conjugated to CF488 (green). Nuclei are stained with Reddot.
- Flow Cytometry
Flow cytometric analysis of PFA-fixed MOLT4 cells. Goat anti-mouse IgG-CF488 (Blue) ; Isotype Control (Red).

Gene Info — CR2

Entrez GeneID [1380](#)

Protein Accession#	P20023
Gene Name	CR2
Gene Alias	C3DR, CD21, SLEB9
Gene Description	complement component (3d/Epstein Barr virus) receptor 2
Omim ID	120650 610927
Gene Ontology	Hyperlink
Gene Summary	Complement component receptor-2 (CR2) is the membrane protein on B lymphocytes to which the Epstein-Barr virus (EBV) binds during infection of these cells. See also CR1 (MIM 120620). Yefenof et al. (1976) [PubMed 181330] found complete overlapping of EBV receptors and C3 (MIM 120700) receptors on human B lymphocytes.[supplied by OMIM]
Other Designations	OTTHUMP00000034421 OTTHUMP00000034447

Pathway

- [B cell receptor signaling pathway](#)
- [Complement and coagulation cascades](#)
- [Hematopoietic cell lineage](#)

Disease

- [Genetic Predisposition to Disease](#)
- [Lupus Erythematosus](#)
- [Lymphoma](#)
- [Macular Degeneration](#)
- [Nasopharyngeal Neoplasms](#)
- [Parkinson disease](#)