

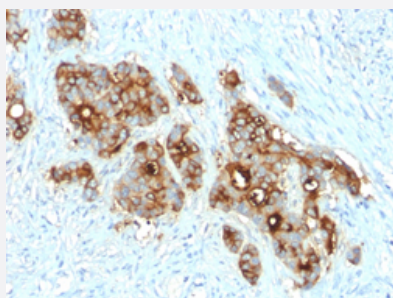
RecomAb™

CEACAM5 recombinant monoclonal antibody, clone C66/2055R

Catalog # RAB00535

Size 100 ug

Applications



Immunohistochemistry (Formalin/PFA-fixed paraffin-embedded sections)

Immunohistochemical staining of human colon carcinoma.

Specification

Product Description	Rabbit recombinant monoclonal antibody raised against full length human CEACAM5.
Antibody Species	Rabbit
Immunogen	Recombinant protein corresponding to full-length human CEACAM5.
Reactivity	Human
Form	Liquid
Purification	Protein A/G purification
Isotype	IgG
Recommend Usage	Immunohistochemistry (Formalin/PFA-fixed paraffin-embedded sections) (1-2 ug/mL) The optimal working dilution should be determined by the end user.
Storage Buffer	In 1 mg/mL PBS
Storage Instruction	Store at -20 to -80°C.

Applications

- Immunohistochemistry (Formalin/PFA-fixed paraffin-embedded sections)

Immunohistochemical staining of human colon carcinoma.

Gene Info — CEACAM1

Entrez GeneID	634
Protein Accession#	P06731
Gene Name	CEACAM1
Gene Alias	BGP, BGP1, BGPI
Gene Description	carcinoembryonic antigen-related cell adhesion molecule 1 (biliary glycoprotein)
Omim ID	109770
Gene Ontology	Hyperlink
Gene Summary	<p>This gene encodes a member of the carcinoembryonic antigen (CEA) gene family, which belongs to the immunoglobulin superfamily. Two subgroups of the CEA family, the CEA cell adhesion molecules and the pregnancy-specific glycoproteins, are located within a 1.2 Mb cluster on the long arm of chromosome 19. Eleven pseudogenes of the CEA cell adhesion molecule subgroup are also found in the cluster. The encoded protein was originally described in bile ducts of liver as biliary glycoprotein. Subsequently, it was found to be a cell-cell adhesion molecule detected on leukocytes, epithelia, and endothelia. The encoded protein mediates cell adhesion via homophilic as well as heterophilic binding to other proteins of the subgroup. Multiple cellular activities have been attributed to the encoded protein, including roles in the differentiation and arrangement of tissue three-dimensional structure, angiogenesis, apoptosis, tumor suppression, metastasis, and the modulation of innate and adaptive immune responses. Multiple transcript variants encoding different isoforms have been reported, but the full-length nature of only two has been determined. [provided by RefSeq]</p>
Other Designations	CD66a antigen antigen CD66 biliary glycoprotein adhesion molecule carcinoembryonic antigen-related cell adhesion molecule 1

Gene Info — CEACAM5

Entrez GeneID	1048
Protein Accession#	P06731
Gene Name	CEACAM5

Gene Alias	CD66e, CEA, DKFZp781M2392
Gene Description	carcinoembryonic antigen-related cell adhesion molecule 5
Omim ID	114890
Gene Ontology	Hyperlink
Other Designations	-

Disease

- [Body Weight](#)
- [Diabetes Mellitus](#)
- [Genetic Predisposition to Disease](#)
- [Meningococcal Infections](#)
- [Metabolic Syndrome X](#)
- [Osteoporosis](#)