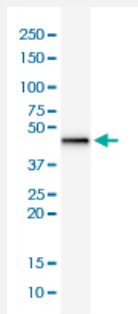


RecomAb™

KRT19 recombinant monoclonal antibody, clone rKRT19/799

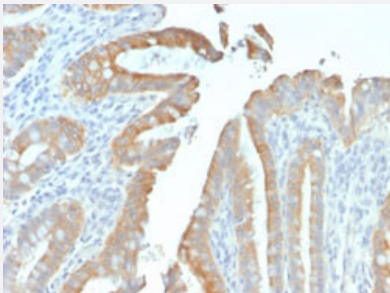
Catalog # RAB00524 Size 100 ug

Applications



Western Blot (Cell lysate)

Western Blot (cell lysate) analysis of HepG2 cell lysate.



Immunohistochemistry (Formalin/PFA-fixed paraffin-embedded sections)

Immunohistochemical staining of human colon carcinoma.

Specification

| | |
|----------------------------|---|
| Product Description | Mouse recombinant monoclonal antibody raised against full length human KRT19. |
| Antibody Species | Mouse |
| Immunogen | Recombinant protein corresponding to full-length human KRT19. |
| Reactivity | Human |
| Form | Liquid |
| Purification | Protein A/G purification |

| | |
|---------------------|--|
| Isotype | IgG1, kappa |
| Recommend Usage | Immunohistochemistry (Formalin/PFA-fixed paraffin-embedded sections) (0.5-1 ug/mL) Western Blot (1-2 ug/mL) The optimal working dilution should be determined by the end user. |
| Storage Buffer | In 1 mg/mL PBS |
| Storage Instruction | Store at -20 to -80°C. Aliquot to avoid repeated freezing and thawing. |

Applications

- Western Blot (Cell lysate)
Western Blot (cell lysate) analysis of HepG2 cell lysate.
- Immunohistochemistry (Formalin/PFA-fixed paraffin-embedded sections)
Immunohistochemical staining of human colon carcinoma.

Gene Info — KRT19

| | |
|--------------------|---|
| Entrez GeneID | 3880 |
| Protein Accession# | P08727 |
| Gene Name | KRT19 |
| Gene Alias | CK19, K19, K1CS, MGC15366 |
| Gene Description | keratin 19 |
| Omim ID | 148020 |
| Gene Ontology | Hyperlink |
| Gene Summary | The protein encoded by this gene is a member of the keratin family. The keratins are intermediate filament proteins responsible for the structural integrity of epithelial cells and are subdivided into cytokeratins and hair keratins. The type I cytokeratins consist of acidic proteins which are arranged in pairs of heterotypic keratin chains. Unlike its related family members, this smallest known acidic cytokeratin is not paired with a basic cytokeratin in epithelial cells. It is specifically expressed in the periderm, the transiently superficial layer that envelopes the developing epidermis. The type I cytokeratins are clustered in a region of chromosome 17q12-q21. [provided by RefSeq] |
| Other Designations | 40-kDa keratin intermediate filament cytokeratin 19 keratin, type I cytoskeletal 19 keratin, type I, 40-kd |

Disease

- [Liver Cirrhosis](#)