

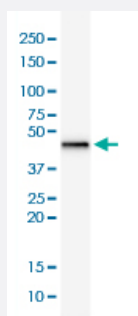
RecomAb™

KRT19 recombinant monoclonal antibody, clone rKRT19/799

Catalog # RAB00514

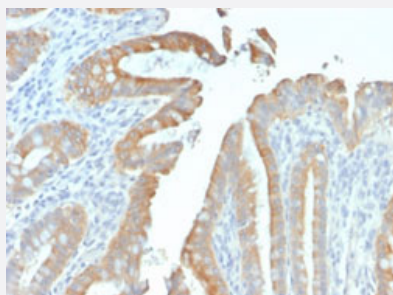
Size 100 ug

Applications



Western Blot (Cell lysate)

Western Blot (cell lysate) analysis of HepG2 cell lysate.



Immunohistochemistry (Formalin/PFA-fixed paraffin-embedded sections)

Immunohistochemical staining of human colon carcinoma.

Specification

Product Description	Mouse recombinant monoclonal antibody raised against full length human KRT19.
Antibody Species	Mouse
Immunogen	Recombinant protein corresponding to full-length human KRT19.
Reactivity	Human
Form	Liquid
Purification	Protein A/G purification

Isotype	IgG1, kappa
Recommend Usage	Immunohistochemistry (Formalin/PFA-fixed paraffin-embedded sections) (0.5-1 ug/mL) Western Blot (1-2 ug/mL) The optimal working dilution should be determined by the end user.
Storage Buffer	In 10 mM PBS (0.05% BSA and 0.05% azide)
Storage Instruction	Store at 2 to 8°C.
Note	This product contains sodium azide: a POISONOUS AND HAZARDOUS SUBSTANCE which should be handled by trained staff only.

Applications

- Western Blot (Cell lysate)

Western Blot (cell lysate) analysis of HepG2 cell lysate.

- Immunohistochemistry (Formalin/PFA-fixed paraffin-embedded sections)

Immunohistochemical staining of human colon carcinoma.

Gene Info — KRT19

Entrez GeneID	3880
Protein Accession#	P08727
Gene Name	KRT19
Gene Alias	CK19, K19, K1CS, MGC15366
Gene Description	keratin 19
Omim ID	148020
Gene Ontology	Hyperlink
Gene Summary	The protein encoded by this gene is a member of the keratin family. The keratins are intermediate filament proteins responsible for the structural integrity of epithelial cells and are subdivided into cytokeratins and hair keratins. The type I cytokeratins consist of acidic proteins which are arranged in pairs of heterotypic keratin chains. Unlike its related family members, this smallest known acidic cytokeratin is not paired with a basic cytokeratin in epithelial cells. It is specifically expressed in the periderm, the transiently superficial layer that envelopes the developing epidermis. The type I cytokeratins are clustered in a region of chromosome 17q12-q21. [provided by RefSeq]

Other Designations

40-kDa keratin intermediate filament|cytokeratin 19|keratin, type I cytoskeletal 19|keratin, type I, 40-kd

Disease

- [Liver Cirrhosis](#)