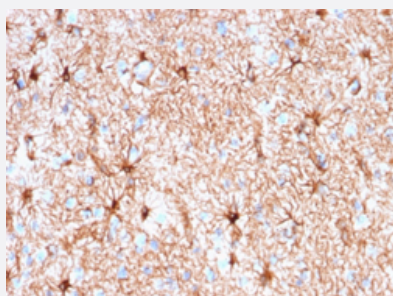


RecomAb™

GFAP recombinant monoclonal antibody, clone rASTRO/789

Catalog # RAB00484 Size 100 ug

Applications



Immunohistochemistry (Formalin/PFA-fixed paraffin-embedded sections)

Immunohistochemical staining (Formalin-fixed paraffin-embedded sections) of human cerebellum with GFAP recombinant monoclonal antibody, clone rASTRO/789 (Cat # RAB00484).

Specification

Product Description	Mouse recombinant monoclonal antibody raised against full length recombinant human GFAP.
Antibody Species	Mouse
Immunogen	Original antibody is raised against recombinant protein corresponding to full length human GFAP.
Theoretical MW (kDa)	~50
Reactivity	Human
Form	Liquid
Purification	Protein A/G purification
Isotype	IgG1, kappa
Recommend Usage	Immunohistochemistry (Formalin/PFA-fixed paraffin-embedded sections) (0.25-0.5 ug/mL) Western Blot (0.5-1 ug/mL) The optimal working dilution should be determined by the end user.
Storage Buffer	In 10 mM PBS

Storage Instruction

Store at -20 to -80°C.
Aliquot to avoid repeated freezing and thawing.

Applications

- Western Blot
- Immunohistochemistry (Formalin/PFA-fixed paraffin-embedded sections)

Immunohistochemical staining (Formalin-fixed paraffin-embedded sections) of human cerebellum with GFAP recombinant monoclonal antibody, clone rASTRO/789 (Cat # RAB00484).

Gene Info — GFAP

Entrez GeneID [2670](#)

Protein Accession# [P14136](#)

Gene Name GFAP

Gene Alias FLJ45472

Gene Description glial fibrillary acidic protein

Omim ID [137780 203450](#)

Gene Ontology [Hyperlink](#)

Gene Summary This gene encodes one of the major intermediate filament proteins of mature astrocytes. It is used as a marker to distinguish astrocytes from other glial cells during development. Mutations in this gene cause Alexander disease, a rare disorder of astrocytes in the central nervous system. Alternative splicing results in multiple transcript variants encoding distinct isoforms. [provided by RefSeq]

Other Designations -

Disease

- [Alzheimer disease](#)
- [Cognition](#)