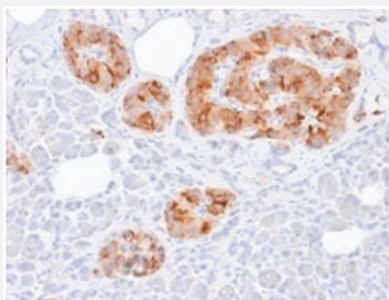


RecomAb™

CHGA recombinant monoclonal antibody, clone rCHGA/777

Catalog # RAB00394 Size 100 ug

Applications



Immunohistochemistry (Formalin/PFA-fixed paraffin-embedded sections)

Immunohistochemical staining (Formalin-fixed paraffin-embedded sections) of human pancreas with CHGA recombinant monoclonal antibody, clone rCHGA/777 (Cat # RAB00394).

Specification

Product Description	Mouse recombinant monoclonal antibody raised against human CHGA.
Antibody Species	Mouse
Immunogen	Original antibody is raised against recombinant protein corresponding to full length human CHGA.
Theoretical MW (kDa)	68-75
Reactivity	Human
Form	Liquid
Purification	Protein A/G purification
Isotype	IgG2b, kappa
Recommend Usage	Flow Cytometry (0.5-1 ug/10 ⁶ cells) Immunofluorescence (1-2 ug/mL) Immunohistochemistry (Formalin/PFA-fixed paraffin-embedded sections) (0.25-0.5 ug/mL) The optimal working dilution should be determined by the end user.
Storage Buffer	In 10 mM PBS

Storage Instruction

Store at -20 to -80°C.
Aliquot to avoid repeated freezing and thawing.

Applications

- Immunohistochemistry (Formalin/PFA-fixed paraffin-embedded sections)

Immunohistochemical staining (Formalin-fixed paraffin-embedded sections) of human pancreas with CHGA recombinant monoclonal antibody, clone rCHGA/777 (Cat # RAB00394).

- Immunofluorescence
- Flow Cytometry

Gene Info — CHGA

Entrez GeneID [1113](#)

Protein Accession# [P10645](#)

Gene Name CHGA

Gene Alias CGA

Gene Description chromogranin A (parathyroid secretory protein 1)

Omim ID [118910](#)

Gene Ontology [Hyperlink](#)

Gene Summary The protein encoded by this gene is a member of the chromogranin/secretogranin family of neuroendocrine secretory proteins. It is found in secretory vesicles of neurons and endocrine cells. This gene product is a precursor to three biologically active peptides; vasostatin, pancreastatin, and parastatin. These peptides act as autocrine or paracrine negative modulators of the neuroendocrine system. Other peptides, including chromostatin, beta-granin, WE-14 and GE-25, are also derived from the full-length protein. However, biological activities for these molecules have not been shown. [provided by RefSeq]

Other Designations betagranin (N-terminal fragment of chromogranin A)|chromogranin A|parathyroid secretory protein 1

Disease

- [Genetic Predisposition to Disease](#)

- [Glomerulonephritis](#)
- [Hypertension](#)
- [Kidney Failure](#)
- [Prostatic Neoplasms](#)
- [Schizophrenia](#)