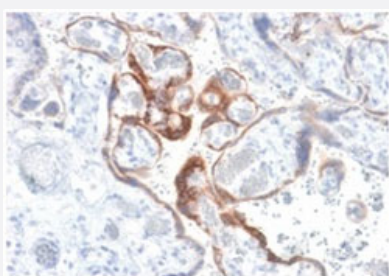


RecomAb™

# CGB recombinant monoclonal antibody, clone HCGb/1985R

Catalog # RAB00392      Size 100 ug

## Applications



### Immunohistochemistry (Formalin/PFA-fixed paraffin-embedded sections)

Immunohistochemical staining (Formalin-fixed paraffin-embedded sections) of human placenta with CGB recombinant monoclonal antibody, clone HCGb/1985R (Cat # RAB00392).

## Specification

<b>Product Description</b>	Rabbit recombinant monoclonal antibody raised against human CGB.
<b>Antibody Species</b>	Rabbit
<b>Immunogen</b>	Original antibody is raised against recombinant protein corresponding to full length human CGB.
<b>Theoretical MW (kDa)</b>	22
<b>Reactivity</b>	Human
<b>Form</b>	Liquid
<b>Purification</b>	Protein A/G purification
<b>Isotype</b>	IgG
<b>Recommend Usage</b>	Immunohistochemistry (Formalin/PFA-fixed paraffin-embedded sections) (0.5-1 ug/mL) The optimal working dilution should be determined by the end user.
<b>Storage Buffer</b>	In 10 mM PBS

**Storage Instruction**

Store at -20 to -80°C.  
Aliquot to avoid repeated freezing and thawing.

## Applications

- Immunohistochemistry (Formalin/PFA-fixed paraffin-embedded sections)

Immunohistochemical staining (Formalin-fixed paraffin-embedded sections) of human placenta with CGB recombinant monoclonal antibody, clone HCGb/1985R (Cat # RAB00392).

## Gene Info — CGB

**Entrez GeneID** [1082](#)

**Gene Name** CGB

**Gene Alias** CGB3, hCGB

**Gene Description** chorionic gonadotropin, beta polypeptide

**Omim ID** [118860](#)

**Gene Ontology** [Hyperlink](#)

**Gene Summary** This gene is a member of the glycoprotein hormone beta chain family and encodes the beta 3 subunit of chorionic gonadotropin (CG). Glycoprotein hormones are heterodimers consisting of a common alpha subunit and an unique beta subunit which confers biological specificity. CG is produced by the trophoblastic cells of the placenta and stimulates the ovaries to synthesize the steroids that are essential for the maintenance of pregnancy. The beta subunit of CG is encoded by 6 genes which are arranged in tandem and inverted pairs on chromosome 19q13.3 and contiguous with the luteinizing hormone beta subunit gene. [provided by RefSeq]

**Other Designations** chorionic gonadotropin beta 3 subunit|chorionic gonadotropin beta chain|chorionic gonadotropin beta subunit

## Disease

- [Abortion](#)
- [Genetic Predisposition to Disease](#)