

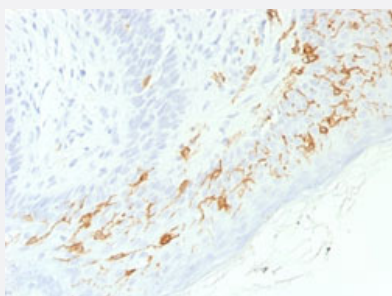
RecomAb™

CD1A recombinant monoclonal antibody, clone C1A/1506R

Catalog # RAB00361

Size 100 ug

Applications



Immunohistochemistry (Formalin/PFA-fixed paraffin-embedded sections)

Immunohistochemical staining (Formalin-fixed paraffin-embedded sections) of human skin with CD1A recombinant monoclonal antibody, clone C1A/1506R (Cat # RAB00361).

Specification

Product Description	Rabbit recombinant monoclonal antibody raised against human CD1A.
Antibody Species	Rabbit
Immunogen	Original antibody is raised against recombinant protein corresponding to full length human CD1A.
Theoretical MW (kDa)	49
Reactivity	Human
Form	Liquid
Purification	Protein A purification
Isotype	IgG, kappa
Recommend Usage	Flow Cytometry (0.5-1 ug/10 ⁶ cells) Immunofluorescence (1-2 ug/mL) Immunohistochemistry (Formalin/PFA-fixed paraffin-embedded sections) (0.5-1 ug/mL) The optimal working dilution should be determined by the end user.
Storage Buffer	In 10 mM PBS (0.05% BSA, 0.05% sodium azide)

Storage Instruction

Store at 4°C.

Note

This product contains sodium azide: a POISONOUS AND HAZARDOUS SUBSTANCE which should be handled by trained staff only.

Applications

- Immunohistochemistry (Formalin/PFA-fixed paraffin-embedded sections)

Immunohistochemical staining (Formalin-fixed paraffin-embedded sections) of human skin with CD1A recombinant monoclonal antibody, clone C1A/1506R (Cat # RAB00361).

- Immunofluorescence

- Flow Cytometry

Gene Info — CD1A

Entrez GeneID

[909](#)

Protein Accession#

[P06126](#)

Gene Name

CD1A

Gene Alias

CD1, FCB6, HTA1, R4, T6

Gene Description

CD1a molecule

Omim ID

[188370](#)

Gene Ontology

[Hyperlink](#)

Gene Summary

This gene encodes a member of the CD1 family of transmembrane glycoproteins, which are structurally related to the major histocompatibility complex (MHC) proteins and form heterodimers with beta-2-microglobulin. The CD1 proteins mediate the presentation of primarily lipid and glycolipid antigens of self or microbial origin to T cells. The human genome contains five CD1 family genes organized in a cluster on chromosome 1. The CD1 family members are thought to differ in their cellular localization and specificity for particular lipid ligands. The protein encoded by this gene localizes to the plasma membrane and to recycling vesicles of the early endocytic system. Alternatively spliced transcript variants have been observed, but their biological validity has not been determined. [provided by RefSeq]

Other Designations

CD1A antigen|CD1A antigen, a polypeptide|OTTHUMP00000018907|T-cell surface antigen T6/L eu-6|T-cell surface glycoprotein CD1a|cluster of differentiation 1 A|cortical thymocyte antigen CD1 A|differentiation antigen CD1-alpha-3|epidermal dendritic cell marker

Publication Reference

- [Foreign body-type multinucleated giant cells induced by interleukin-4 express select lymphocyte co-stimulatory molecules and are phenotypically distinct from osteoclasts and dendritic cells.](#)

McNally AK, Anderson JM.

Experimental and Molecular Pathology 2011 Dec; 91(3):673.

Application: WB-Ce, Human, Dendritic cells, HEK 293T cells, Monocytes

- [Hyperexpression of the high-affinity IgE receptor-beta chain in chronic allergic keratoconjunctivitis.](#)

Matsuda A, Okayama Y, Ebihara N, Yokoi N, Hamuro J, Walls AF, Ra C, Hopkin JM, Kinoshita S.

Investigative Ophthalmology & Visual Science 2009 Jun; 50(6):2871.

Application: IHC-Fr, Human, Giant Papillae

- [Recruitment of dendritic cells in human liver with metastases.](#)

Gulubova M, Manolova I, Cirovski G, Sivrev D.

Clinical & Experimental Metastasis 2008 Jun; 25(7):777.

Application: IHC-P, Human, Liver

- [A phase I study of immunization using particle-mediated epidermal delivery of genes for gp100 and GM-CSF into uninvolved skin of melanoma patients.](#)

Cassaday RD, Sondel PM, King DM, Macklin MD, Gan J, Warner TF, Zuleger CL, Bridges AJ, Schalch HG, Kim KM, Hank JA, Mahvi DM, Albertini MR.

Clinical Cancer Research 2007 Jan; 13(2 Pt 1):540.

Application: IHC-P, Human, Human skin biopsies

Pathway

- [Hematopoietic cell lineage](#)

Disease

- [Campylobacter Infections](#)
- [Genetic Predisposition to Disease](#)
- [Guillain-Barre Syndrome](#)
- [Lung Diseases](#)

- [Mycobacterium Infections](#)
- [Polyradiculoneuropathy](#)