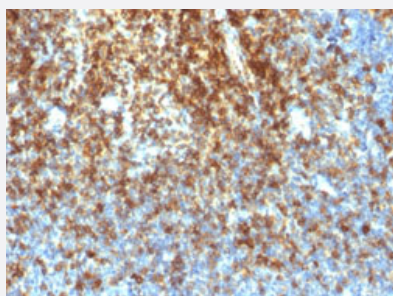


RecomAb™

SPN recombinant monoclonal antibody, clone SPN/1766R

Catalog # RAB00354 Size 100 ug

Applications



Immunohistochemistry (Formalin/PFA-fixed paraffin-embedded sections)

Immunohistochemical staining (Formalin-fixed paraffin-embedded sections) of human tonsil with SPN recombinant monoclonal antibody, clone SPN/1766R (Cat # RAB00354).

Specification

Product Description	Rabbit recombinant monoclonal antibody raised against human SPN.
Antibody Species	Rabbit
Immunogen	Original antibody is raised against recombinant protein corresponding to full length human SPN.
Theoretical MW (kDa)	95, 115, 135
Reactivity	Human
Form	Liquid
Purification	Protein A/G purification
Isotype	IgG, kappa
Recommend Usage	Flow Cytometry (0.5-1 ug/10 ⁶ cells) Immunofluorescence (1-2 ug/mL) Immunohistochemistry (Formalin/PFA-fixed paraffin-embedded sections) (0.5-1 ug/mL) The optimal working dilution should be determined by the end user.
Storage Buffer	In 10 mM PBS

Storage Instruction

Store at -20 to -80°C.
Aliquot to avoid repeated freezing and thawing.

Applications

- Immunohistochemistry (Formalin/PFA-fixed paraffin-embedded sections)

Immunohistochemical staining (Formalin-fixed paraffin-embedded sections) of human tonsil with SPN recombinant monoclonal antibody, clone SPN/1766R (Cat # RAB00354).

- Immunofluorescence
- Flow Cytometry

Gene Info — SPN

Entrez GeneID [6693](#)

Protein Accession# [P16150](#)

Gene Name SPN

Gene Alias CD43, GPL115, LSN

Gene Description sialophorin

Omim ID [182160](#)

Gene Ontology [Hyperlink](#)

Gene Summary Sialophorin (leukosialin) is a major sialoglycoprotein on the surface of human T lymphocytes, monocytes, granulocytes, and some B lymphocytes, which appears to be important for immune function and may be part of a physiologic ligand-receptor complex involved in T-cell activation.[supplied by OMIM]

Other Designations leukosialin|sialophorin (gpL115, leukosialin, CD43)|sialophorin (leukosialin, CD43)

Publication Reference

- [Expression of the leukocyte-associated sialoglycoprotein CD43 by a colon carcinoma cell line.](#)

Baeckström D, Zhang K, Asker N, Rüetschi U, Ek M, Hansson GC.

The Journal of Biological Chemistry 1995 Jun; 270(23):13688.

Application: IP, Human, COLO 205, HL-60 cells

Pathway

- [Cell adhesion molecules \(CAMs\)](#)

Disease

- [Kidney Failure](#)