

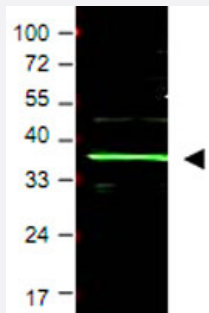
BMI1 polyclonal antibody

Catalog # PAB9982

Size 100 ug

Applications

Western Blot (Cell lysate)



Western blot using BMI1 polyclonal antibody (Cat # PAB9982) shows detection of a band ~37 KDa corresponding to human BMI1 (arrowhead).

Approximately 20 ug of a U-2 OS whole cell lysate (bone osteosarcoma) was separated by 4-20% SDS-PAGE and transferred onto nitrocellulose.

After blocking in PBS containing 5% nonfat dry milk, the membrane was probed overnight at 4°C with the primary antibody diluted to 1 : 1,000 in PBS containing 1% nonfat dry milk.

The membrane was washed and reacted with a 1 : 20,000 dilution of IRDye™800 conjugated Rb-a-Goat IgG [H&L] MX for 45 min at room temperature.

IRDye™800 fluorescence image was captured using the Odyssey® Infrared Imaging System developed by LI-COR.

IRDye is a trademark of LI-COR, Inc.

Specification

Product Description	Goat polyclonal antibody raised against synthetic peptide of BMI1.
Immunogen	A synthetic peptide corresponding to amino acids 252-264 of human BMI1.
Host	Goat
Reactivity	Bovine, Cat, Chicken, Chimpanzee, Clawed frog, Dog, Human, Orangutan, Rat
Form	Liquid
Quality Control Testing	Antibody Reactive Against Synthetic Peptide.
Recommend Usage	ELISA (1:5000-1:30000) Western Blot (1:500-1:3000) The optimal working dilution should be determined by the end user.

Storage Buffer	In 20 mM KH ₂ PO ₄ , 150 mM NaCl, pH 7.2 (0.01% sodium azide)
Storage Instruction	Store at 4°C. For long term storage store at -20°C. Aliquot to avoid repeated freezing and thawing.
Note	This product contains sodium azide: a POISONOUS AND HAZARDOUS SUBSTANCE which should be handled by trained staff only.

Applications

- Western Blot (Cell lysate)

Western blot using BMI1 polyclonal antibody (Cat # PAB9982) shows detection of a band ~37 KDa corresponding to human BMI1 (arrowhead).

Approximately 20 ug of a U-2 OS whole cell lysate (bone osteosarcoma) was separated by 4-20% SDS-PAGE and transferred onto nitrocellulose.

After blocking in PBS containing 5% nonfat dry milk, the membrane was probed overnight at 4°C with the primary antibody diluted to 1 : 1,000 in PBS containing 1% nonfat dry milk.

The membrane was washed and reacted with a 1 : 20,000 dilution of IRDye™ 800 conjugated Rb-a-Goat IgG [H&L] MX for 45 min at room temperature.

IRDye™ 800 fluorescence image was captured using the Odyssey® Infrared Imaging System developed by LI-COR.

IRDye is a trademark of LI-COR, Inc.

- Enzyme-linked Immunoabsorbent Assay

Gene Info — BMI1

Entrez GeneID	648
Protein Accession#	NP_005171;P35226
Gene Name	BMI1
Gene Alias	MGC12685, PCGF4, RNF51
Gene Description	BMI1 polycomb ring finger oncogene
Omim ID	164831
Gene Ontology	Hyperlink
Other Designations	B lymphoma Mo-MLV insertion region 1 homolog fvi-2/bmi-1 murine leukemia viral (bmi-1) oncogene homolog oncogene BMI-1 polycomb group ring finger 4

Publication Reference

- [MAPKAP kinase 3pK phosphorylates and regulates chromatin association of the polycomb group protein Bmi1.](#)
Voncken JW, Niessen H, Neufeld B, Rennefahrt U, Dahlmans V, Kubben N, Holzer B, Ludwig S, Rapp UR.
The Journal of Biological Chemistry 2005 Feb; 280(7):5178.
Application: IF, WB-Ce, Human, HeLa, 293T, TIG3, U2OS cells
- [Bmi1 is essential for cerebellar development and is overexpressed in human medulloblastomas.](#)
Leung C, Lingbeek M, Shakhova O, Liu J, Tanger E, Saremaslani P, Van Lohuizen M, Marino S.
Nature 2004 Mar; 428(6980):337.
Application: IHC, WB, Human, Mouse , CGCs, D-341, D-458, DAOY, RK3E cells, Human medulloblastomas
- [Proteomics analysis of the centromere complex from HeLa interphase cells: UV-damaged DNA binding protein 1 \(DDB-1\) is a component of the CEN-complex, while BMI-1 is transiently co-localized with the centromeric region in interphase.](#)
Obuse C, Yang H, Nozaki N, Goto S, Okazaki T, Yoda K.
Genes to Cells 2004 Feb; 9(2):105.
Application: IF, WB-Ce, Human, HeLa, MRC5 cells