

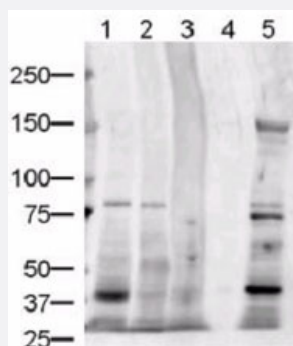
JAG1 polyclonal antibody

Catalog # PAB9954

Size 500 ug

Applications

Western Blot (Tissue lysate)



Western blot using JAG1 polyclonal antibody (Cat # PAB9954) shows detection of JAG1 protein in various whole cell lysates : human brain (Lane 1), human kidney (Lane 2), human liver (Lane 3), and mouse liver (Lane 5).

Lane 4 contained sample buffer only.

The band at ~134 KDa in lane 5 is believed to be JAG1 precursor.

The identity of minor reactive bands is unknown.

Each lane contains approximately 20 ug of lysate.

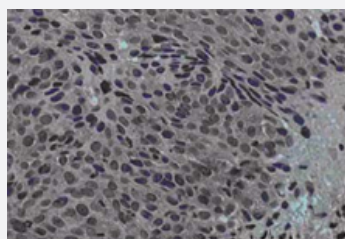
Primary antibody was used at a 1 : 500 dilution.

The membrane was washed and reacted with a 1 : 5,000 dilution of HRP conjugated Gt-a-Rabbit IgG.

Exposure time was 1 min.

Predicted molecular weight is 134 KDa.

Immunohistochemistry (Formalin/PFA-fixed paraffin-embedded sections)

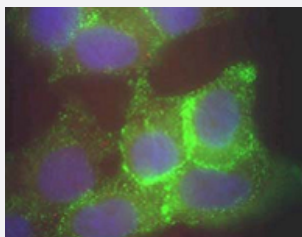


Immunohistochemical staining of human cervical cancer tissue (40X magnification) using JAG1 polyclonal antibody (Cat # PAB9954) . Tissue was fixed with formalin and embedded in paraffin.

Hematoxylin was used to counter-stain cells. A 1 : 100 dilution of primary antibody was used.

Personal Communication. Martin Kast Laboratory.

Immunofluorescence



Immunofluorescence Microscopy using JAG1 polyclonal antibody (Cat # PAB9954) of human corneal epithelial cells.

Primary antibody was used at a 1 : 500 dilution.

The JAG1 (green staining) is local-ized to the cytoplasm and is consistent with reports in the literature.

The nucleus is stained with Bis benzimide (blue) .

Personal Communication. Aihua Ma, Univdersity of Cardiff.

Specification

Product Description	Rabbit polyclonal antibody raised against synthetic peptide of JAG1.
Immunogen	A synthetic peptide corresponding to amino acids 110-125 of human JAG1.
Host	Rabbit
Reactivity	Clawed frog, Dog, Human
Form	Liquid
Quality Control Testing	Antibody Reactive Against Synthetic Peptide.
Recommend Usage	ELISA (1:5000-1:20000) Western Blot (1:500-1:2000) Immunohistochemistry (1:100-1:500) Immunofluorescence (1:200-1:1000) The optimal working dilution should be determined by the end user.
Storage Buffer	In 20 mM KH ₂ PO ₄ , 150 mM NaCl, pH 7.2 (0.01% sodium azide)
Storage Instruction	Store at 4°C. For long term storage store at -20°C. Aliquot to avoid repeated freezing and thawing.
Note	This product contains sodium azide: a POISONOUS AND HAZARDOUS SUBSTANCE which should be handled by trained staff only.

Applications

- Western Blot (Tissue lysate)

Western blot using JAG1 polyclonal antibody (Cat # PAB9954) shows detection of JAG1 protein in various whole cell lysates : human brain (Lane 1), human kidney (Lane 2), human liver (Lane 3), and mouse liver (Lane 5).

Lane 4 contained sample buffer only.

The band at ~134 KDa in lane 5 is believed to be JAG1 precursor.

The identity of minor reactive bands is unknown.

Each lane contains approximately 20 ug of lysate.

Primary antibody was used at a 1 : 500 dilution.

The membrane was washed and reacted with a 1 : 5,000 dilution of HRP conjugated Gt-a-Rabbit IgG.

Exposure time was 1 min.

Predicted molecular weight is 134 KDa.

- Immunohistochemistry (Formalin/PFA-fixed paraffin-embedded sections)

Immunohistochemical staining of human cervical cancer tissue (40X magnification) using JAG1 polyclonal antibody (Cat # PAB9954) . Tissue was fixed with formalin and embedded in paraffin.

Hematoxylin was used to counter-stain cells. A 1 : 100 dilution of primary antibody was used.

Personal Communication. Martin Kast Laboratory.

- Immunofluorescence

Immunofluorescence Microscopy using JAG1 polyclonal antibody (Cat # PAB9954) of human corneal epithelial cells.

Primary antibody was used at a 1 : 500 dilution.

The JAG1 (green staining) is local-ized to the cytoplasm and is consistent with reports in the literature.

The nucleus is stained with Bis benzimide (blue) .

Personal Communication. Aihua Ma, Univdersity of Cardiff.

- Enzyme-linked Immunoabsorbent Assay

Gene Info — JAG1

Entrez GeneID

[182](#)

Gene Name

JAG1

Gene Alias

AGS, AHD, AWS, CD339, HJ1, JAGL1, MGC104644

Gene Description

jagged 1 (Alagille syndrome)

Omim ID

[118450](#) [187500](#) [601920](#)

Gene Ontology

[Hyperlink](#)

Gene Summary

The jagged 1 protein encoded by JAG1 is the human homolog of the Drosophila jagged protein. Human jagged 1 is the ligand for the receptor notch 1, the latter a human homolog of the Drosophila jagged receptor notch. Mutations that alter the jagged 1 protein cause Alagille syndrome. Jagged 1 signalling through notch 1 has also been shown to play a role in hematopoiesis. [provided by RefSeq]

Publication Reference

- [Immunohistological localization of Notch receptors and their ligands Delta and Jagged in synovial tissues of rheumatoid arthritis.](#)

Yabe Y, Matsumoto T, Tsurumoto T, Shindo H.

Journal of Orthopaedic Science 2005 Nov; 10(6):589.

Application: IHC-P, Human, Rheumatoid arthritis synovium

- [Complementation of human papillomavirus type 16 E6 and E7 by Jagged1-specific Notch1-phosphatidylinositol 3-kinase signaling involves pleiotropic oncogenic functions independent of CBF1;Su\(H\);Lag-1 activation.](#)

Veeraraghavalu K, Subbaiah VK, Srivastava S, Chakrabarti O, Syal R, Krishna S.

Journal of Virology 2005 Jun; 79(12):7889.

Application: IF, WB, Human, CaSki, HaCaT, SiHa cells

- [Crosstalk between Jagged1 and GDNF/Ret/GFRalpha1 signalling regulates ureteric budding and branching.](#)

Kuure S, Sainio K, Vuolteenaho R, Ilves M, Wartiovaara K, Immonen T, Kvist J, Vainio S, Sariola H.

Mechanisms of Development 2005 Jun; 122(6):765.

Pathway

- [Notch signaling pathway](#)

Disease

- [Alagille Syndrome](#)
- [Alzheimer disease](#)
- [Brain Diseases](#)
- [CADASIL](#)
- [Cardiovascular Diseases](#)
- [Cerebral Amyloid Angiopathy](#)

- [Chromosome Deletion](#)
- [Cleft Lip](#)
- [Cleft Palate](#)
- [Diabetes Mellitus](#)
- [Down Syndrome](#)
- [Edema](#)
- [Fractures](#)
- [Genetic Predisposition to Disease](#)
- [Heart Defects](#)
- [Hepatitis C](#)
- [Kidney Failure](#)
- [Multiple Sclerosis](#)
- [Neuroblastoma](#)
- [Osteoporosis](#)
- [Pulmonary Valve Stenosis](#)
- [Tetralogy of Fallot](#)