

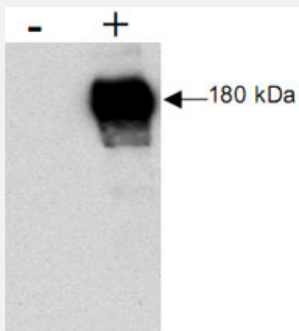
ERBB3 polyclonal antibody

Catalog # PAB9951

Size 250 ug

Applications

Immunoprecipitation



Combined immunoprecipitation and immunoblot of a human cell lysate using ERBB3 polyclonal antibody (Cat # PAB9951).

Lysates were prepared from a human LNCap prostate cell line both with (+) treatment with Heregulin-beta1 for 15' at 100 ng/mL and without (-) the addition of Heregulin-beta1.

The combination of immunoprecipitation and immunoblotting was performing using 5 uL of the ERBB3 polyclonal antibody for immunoprecipitation followed by immunoblot detection using an anti-phosphotyrosine antibody.

Visualization occurred using an ECL system.

Film exposure approximately 1'.

Specification

Product Description	Rabbit polyclonal antibody raised against partial recombinant ERBB3.
Immunogen	Recombinant GST fusion protein corresponding to amino acids 1283-1323 of human ERBB3.
Host	Rabbit
Reactivity	Human, Mouse, Rat
Form	Liquid
Quality Control Testing	Antibody Reactive Against Recombinant Protein.
Recommend Usage	ELISA (1:10000-1:50000) WB (1:500- 1:2000) Immunoprecipitation (5 ul) The optimal working dilution should be determined by the end user.
Storage Buffer	In 20 mM KH ₂ PO ₄ , 150 mM NaCl, pH 7.2 (0.01% sodium azide)

Storage Instruction

Store at 4°C. For long term storage store at -20°C.
Aliquot to avoid repeated freezing and thawing.

Note

This product contains sodium azide: a POISONOUS AND HAZARDOUS SUBSTANCE which should be handled by trained staff only.

Applications

- Western Blot

- Immunoprecipitation

Combined immunoprecipitation and immunoblot of a human cell lysate using ERBB3 polyclonal antibody (Cat # PAB9951). Lysates were prepared from a human LNCap prostate cell line both with (+) treatment with Heregulin-beta1 for 15' at 100 ng/mL and without (-) the addition of Heregulin-beta1. The combination of immunoprecipitation and immunoblotting was performing using 5 uL of the ERBB3 polyclonal antibody for immunoprecipitation followed by immunoblot detection using an anti-phosphotyrosine antibody. Visualization occurred using an ECL system. Film exposure approximately 1'.

- Enzyme-linked Immunoabsorbent Assay

Gene Info — ERBB3

Entrez GeneID[2065](#)**Gene Name**

ERBB3

Gene Alias

ErbB-3, HER3, LCCS2, MDA-BF-1, MGC88033, c-erbB-3, c-erbB3, erbB3-S, p180-ErbB3, p45-sErbB3, p85-sErbB3

Gene Description

v-erb-b2 erythroblastic leukemia viral oncogene homolog 3 (avian)

Omim ID[190151](#) [607598](#)**Gene Ontology**[Hyperlink](#)

Gene Summary

This gene encodes a member of the epidermal growth factor receptor (EGFR) family of receptor tyrosine kinases. This membrane-bound protein has a neuregulin binding domain but not an active kinase domain. It therefore can bind this ligand but not convey the signal into the cell through protein phosphorylation. However, it does form heterodimers with other EGF receptor family members which do have kinase activity. Heterodimerization leads to the activation of pathways which lead to cell proliferation or differentiation. Amplification of this gene and/or overexpression of its protein have been reported in numerous cancers, including prostate, bladder, and breast tumors. Alternative transcriptional splice variants encoding different isoforms have been characterized. One isoform lacks the intermembrane region and is secreted outside the cell. This form acts to modulate the activity of the membrane-bound form. Additional splice variants have also been reported, but they have not been thoroughly characterized. [provided by RefSeq]

Other Designations

erbB-3|lethal congenital contracture syndrome 2|v-erb-b2 avian erythroblastic leukemia viral oncogene homolog 3

Publication Reference

- [Coexpression patterns of EGFR, HER2, HER3 and HER4 in non-melanoma skin cancer.](#)

Krahn G, Leiter U, Kaskel P, Udart M, Utikal J, Bezold G, Peter RU.

European Journal of Cancer 2001 Jan; 37(2):251.

- [Expression of the receptor tyrosine kinases, epidermal growth factor receptor, ErbB2, and ErbB3, in human ocular surface epithelia.](#)

Liu Z, Carvajal M, Carraway CA, Carraway K, Pflugfelder SC.

Cornea 2001 Jan; 20(1):81.

Application: IF, WB-Ti, Human, Cornea, Conjunctiva tissues, Ocular

- [Neuregulin-induced association of Sos Ras exchange protein with HER2\(erbB2\)/HER3\(erbB3\) receptor complexes in Schwann cells through a specific Grb2-HER2\(erbB2\) interaction.](#)

Goodearl A, Viehover A, Vartanian T.

Developmental Neuroscience 2001 Jan; 23(1):25.

Application: IP, WB-Ce, Rat, Schwann cells

Pathway

- [Calcium signaling pathway](#)
- [Endocytosis](#)
- [ErbB signaling pathway](#)

Disease

- [Addison Disease](#)
- [Arthritis](#)
- [Autoimmune Diseases](#)
- [Bipolar Disorder](#)
- [Brain Neoplasms](#)
- [Carcinoma](#)
- [Cardiovascular Diseases](#)
- [Celiac Disease](#)
- [Coronary Artery Disease](#)
- [Crohn Disease](#)
- [Diabetes Mellitus](#)
- [Edema](#)
- [Genetic Predisposition to Disease](#)
- [Glioma](#)
- [Hypertension](#)
- [Multiple Sclerosis](#)
- [Ovarian Neoplasms](#)
- [Prostatic Neoplasms](#)
- [Schizophrenia](#)
- [Thyroid Diseases](#)