

TUBA1B polyclonal antibody

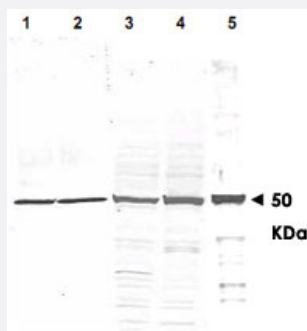
Catalog # PAB9934

Size 200 ug

Applications

Western Blot

Western blot using TUBA1B polyclonal antibody (Cat # PAB9934) shows detection of a predominant band at ~50 KDa corresponding to TUBA1B (arrowhead).



Lanes correspond to whole cell lysates from mouse brain (Lane 1), rat brain (Lane 2), A-431 cells (Lane 3), Jurkat cells (Lane 4) and HeLa cells (Lane 5). Approximately 35 µg of each lysate was separated on a 4-20% Tris-HEPES gel by SDS-PAGE and transferred onto nitrocellulose.

After blocking the membrane was probed with the primary antibody diluted to 1 : 1,200.

Reaction occurred 2h at room temperature followed by washes and reaction with a 1 : 10,000 dilution of IRDye® 800 conjugated Gt-a-Rb IgG [H&L] MX10 for 45 min at room temperature.

IRDye® 800 fluorescence image was captured using the Odyssey® Infrared Imaging System developed by LI-COR.

IRDye is a trademark of LI-COR, Inc.

Specification

Product Description	Rabbit polyclonal antibody raised against synthetic peptide of TUBA1B.
Immunogen	A synthetic peptide corresponding to amino acids 427-441 of human TUBA1B.
Host	Rabbit
Reactivity	Birds, Human
Form	Liquid
Quality Control Testing	Antibody Reactive Against Synthetic Peptide.

Recommend Usage	ELISA (1:5000-1:25000) Western Blot (1:500-1:3000) The optimal working dilution should be determined by the end user.
Storage Buffer	In 20 mM potassium phosphate buffer, 150 mM NaCl, pH 7.2 (0.01% sodium azide)
Storage Instruction	Store at 4°C. For long term storage store at -20°C. Aliquot to avoid repeated freezing and thawing.
Note	This product contains sodium azide: a POISONOUS AND HAZARDOUS SUBSTANCE which should be handled by trained staff only.

Applications

- Western Blot

Western blot using TUBA1B polyclonal antibody (Cat # PAB9934) shows detection of a predominant band at ~50 KDa corresponding to TUBA1B (arrowhead).

Lanes correspond to whole cell lysates from mouse brain (Lane 1), rat brain (Lane 2), A-431 cells (Lane 3), Jurkat cells (Lane 4) and HeLa cells (Lane 5).

Approximately 35 µg of each lysate was separated on a 4-20% Tris-HEPES gel by SDS-PAGE and transferred onto nitrocellulose.

After blocking the membrane was probed with the primary antibody diluted to 1 : 1,200.

Reaction occurred 2h at room temperature followed by washes and reaction with a 1 : 10,000 dilution of IRDye® 800 conjugated Gt-a-Rb IgG [H&L] MX10 for 45 min at room temperature.

IRDye® 800 fluorescence image was captured using the Odyssey® Infrared Imaging System developed by LI-COR.

IRDye is a trademark of LI-COR, Inc.

- Immunofluorescence

- Enzyme-linked Immunoabsorbent Assay

Gene Info — TUBA1B

Entrez GeneID	10376
Protein Accession#	P68363;NP006000
Gene Name	TUBA1B
Gene Alias	K-ALPHA-1
Gene Description	tubulin, alpha 1b
Omim ID	602530
Gene Ontology	Hyperlink

Gene Summary	O
Other Designations	alpha tubulin tubulin, alpha, ubiquitous

Publication Reference

- [Structural features and restricted expression of a human alpha-tubulin gene.](#)
Hall JL, Cowan NJ.
Nucleic Acids Research 1985 Jan; 13(1):207.
- [Expression of human alpha-tubulin genes: interspecies conservation of 3' untranslated regions.](#)
Cowan NJ, Dobner PR, Fuchs EV, Cleveland DW.
Molecular and Cellular Biology 1993 Oct; 3(10):1738.

Pathway

- [Gap junction](#)
- [Pathogenic Escherichia coli infection - EHEC](#)