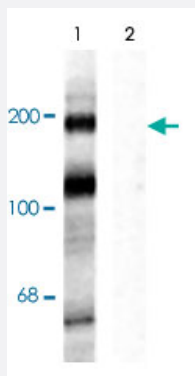


Grin2b (phospho Y1472) polyclonal antibody

Catalog # PAB9673

Size 100 uL

Applications



Western Blot (Tissue lysate)

Western blot of rat hippocampal lysate showing specific immunolabeling of the ~180k Grin2b subunit of the NMDAR phosphorylated at Tyr1472 (Control). The phosphospecificity of this labeling is shown in the second lane (lambda-phosphatase: lambda-Ptase). The blot is identical to the control except that it was incubated in lambda-Ptase (1200 units for 30 min) before being exposed to the Grin2b (phospho Y1472) polyclonal antibody (Cat # PAB9673). The immunolabeling is completely eliminated by treatment with lambda-Ptase.

Specification

Product Description	Rabbit polyclonal antibody raised against synthetic phosphopeptide of Grin2b.
Immunogen	Synthetic phosphopeptide corresponding to residues surrounding Y1472 of rat Grin2b.
Host	Rabbit
Theoretical MW (kDa)	180
Reactivity	Bovine, Chicken, Dog, Human, Mouse, Primates, Rat, Zebra fish
Specificity	Specific for the ~180k NMDAR NR2B-subunit protein phosphorylated at Tyr1472 in Western blots. This antibody also labels proteins of ~65k and ~115k. Immunolabeling is completely blocked by blocked by either λ-Ptase or by the phosphopeptide used as the antigen but not by the corresponding dephosphopeptide.
Form	Liquid
Purification	Affinity purification
Quality Control Testing	Antibody Reactive Against Synthetic Peptide.

Recommend Usage	Western Blot (1:1000) The optimal working dilution should be determined by the end user.
Storage Buffer	In 10 mM HEPES, 150 mM NaCl, pH 7.5 (50% glycerol, 10% BSA)
Storage Instruction	Store at -20°C. Aliquot to avoid repeated freezing and thawing.

Applications

- Western Blot (Tissue lysate)

Western blot of rat hippocampal lysate showing specific immunolabeling of the ~180k Grin2b subunit of the NMDAR phosphorylated at Tyr1472 (Control). The phosphospecificity of this labeling is shown in the second lane (lambda-phosphatase: lambda-Ptase). The blot is identical to the control except that it was incubated in lambda-Ptase (1200 units for 30 min) before being exposed to the Grin2b (phospho Y1472) polyclonal antibody (Cat # PAB9673). The immunolabeling is completely eliminated by treatment with lambda-Ptase.

Gene Info — Grin2b

Entrez GeneID	24410
Protein Accession#	Q00960
Gene Name	Grin2b
Gene Alias	-
Gene Description	glutamate receptor, ionotropic, N-methyl D-aspartate 2B
Gene Ontology	Hyperlink
Gene Summary	ionotropic
Other Designations	glutamate receptor, ionotropic, NMDA2B

Publication Reference

- [Tyrosine dephosphorylation and ethanol inhibition of N-Methyl-D-aspartate receptor function.](#)

Alvestad RM, Grosshans DR, Coultrap SJ, Nakazawa T, Yamamoto T, Browning MD.

The Journal of Biological Chemistry 2003 Jan; 278(13):11020.

Application: IP, WB, Rat, Rat hippocampus

- [NMDA-receptor trafficking and targeting: implications for synaptic transmission and plasticity.](#)

Carroll RC, Zukin RS.

Trends in Neurosciences 2002 Nov; 25(11):571.

- [Trafficking of NMDA receptors.](#)

Wentholt RJ, Prybylowski K, Standley S, Sans N, Petralia RS.

Annual Review of Pharmacology and Toxicology 2002 Jan; 43:335.