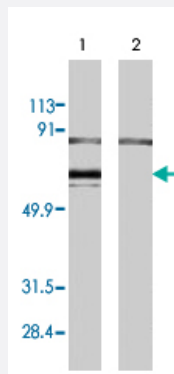


# ER-alpha polyclonal antibody

Catalog # PAB8517

Size 25 ug

## Applications



### Western Blot

Western blot analysis of extract from ERα cells (lane 1) and vector (lane 2), using ERα polyclonal antibody (Cat # PAB8517).

## Specification

<b>Product Description</b>	Rabbit polyclonal antibody raised against synthetic peptide of Estrogen receptor-alpha.
<b>Immunogen</b>	A synthetic peptide corresponding to alligator Estrogen receptor-alpha.
<b>Host</b>	Rabbit
<b>Reactivity</b>	Crocodile
<b>Form</b>	Liquid
<b>Quality Control Testing</b>	Antibody Reactive Against Synthetic Peptide.
<b>Recommend Usage</b>	Western Blot (1-3 ug/mL) The optimal working dilution should be determined by the end user.
<b>Storage Buffer</b>	In PBS (0.1% proclin, 2.0% Block Ace)
<b>Storage Instruction</b>	Store at -20°C. Aliquot to avoid repeated freezing and thawing.

## Applications

- Western Blot

Western blot analysis of extract from ERα cells (lane 1) and vector (lane 2), using ERα polyclonal antibody (Cat # PAB8517).

## Publication Reference

- [Molecular cloning of the estrogen and progesterone receptors of the American alligator.](#)

Katsu Y, Bermudez DS, Braun EL, Helbing C, Miyagawa S, Gunderson MP, Kohno S, Bryan TA, Guillette LJ Jr, Iguchi T.  
General and Comparative Endocrinology 2004 Mar; 136(1):122.