

ENO2 polyclonal antibody

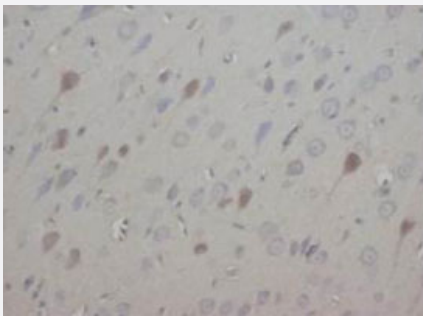
Catalog # PAB7999 Size 100 ug

Applications



Western Blot (Tissue lysate)

Western blot analysis of rat brain tissue lysate. Using ENO2 polyclonal antibody (Cat # PAB7999) .



Immunohistochemistry (Formalin/PFA-fixed paraffin-embedded sections)

Immunohistochemical analysis of paraffin-embedded rat brain sections using ENO2 polyclonal antibody (Cat # PAB7999) .

Specification

Product Description	Rabbit polyclonal antibody raised against synthetic peptide of ENO2.
Immunogen	A synthetic peptide corresponding to amino acids at C-terminus of human ENO2.
Host	Rabbit
Theoretical MW (kDa)	47.2
Reactivity	Human, Mouse, Rabbit, Rat
Form	Lyophilized
Purification	Affinity purification

Isotype	IgG
Recommend Usage	Western Blot (1-2 ug/mL) Immunohistochemistry (Formalin/PFA-fixed paraffin-embedded sections) (1-2 ug/mL) The optimal working dilution should be determined by the end user.
Storage Buffer	Lyophilized from 0.9 mg NaCl, 0.2 mg Na ₂ HPO ₄ (5 mg BSA, 0.05 mg sodium azide, 0.05 mg Thimerosal)
Storage Instruction	Store at -20°C on dry atmosphere. After reconstitution with 200 uL of deionized water and concentration will be 500 ug/mL, store at -20°C or lower. Aliquot to avoid repeated freezing and thawing.
Note	This product contains sodium azide and thimerosal: POISONOUS AND HAZARDOUS SUBSTANCE which should be handled by trained staff only.

Applications

- Western Blot (Tissue lysate)

Western blot analysis of rat brain tissue lysate. Using ENO2 polyclonal antibody (Cat # PAB7999) .

- Immunohistochemistry (Formalin/PFA-fixed paraffin-embedded sections)

Immunohistochemical analysis of paraffin-embedded rat brain sections using ENO2 polyclonal antibody (Cat # PAB7999) .

Gene Info — ENO2

Entrez GeneID	2026
Gene Name	ENO2
Gene Alias	NSE
Gene Description	enolase 2 (gamma, neuronal)
Omim ID	131360
Gene Ontology	Hyperlink
Gene Summary	This gene encodes one of the three enolase isoenzymes found in mammals. This isoenzyme, a homodimer, is found in mature neurons and cells of neuronal origin. A switch from alpha enolase to gamma enolase occurs in neural tissue during development in rats and primates. [provided by RefSeq]

Other Designations

2-phospho-D-glycerate hydrolyase|enolase 2|neural enolase|neuron specific gamma enolase|neuron-specific enolase

Pathway

- [Biosynthesis of alkaloids derived from histidine and purine](#)
- [Biosynthesis of alkaloids derived from ornithine](#)
- [Biosynthesis of alkaloids derived from shikimate pathway](#)
- [Biosynthesis of alkaloids derived from terpenoid and polyketide](#)
- [Biosynthesis of phenylpropanoids](#)
- [Biosynthesis of plant hormones](#)
- [Biosynthesis of terpenoids and steroids](#)
- [Glycolysis / Gluconeogenesis](#)
- [Metabolic pathways](#)
- [RNA degradation](#)

Disease

- [Alzheimer disease](#)
- [Cerebral Amyloid Angiopathy](#)
- [Genetic Predisposition to Disease](#)
- [Neuroblastoma](#)
- [Schizophrenia](#)