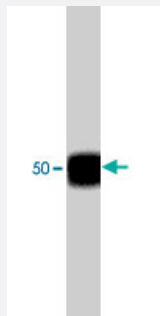


TUBB3 polyclonal antibody

Catalog # PAB7877

Size 100 uL

Applications



Western Blot (Tissue lysate)

Western blot analysis of mouse brain. The blot was probed with TUBB3 polyclonal antibody (Cat # PAB7877).

Specification

Product Description	Rabbit polyclonal antibody raised against synthetic peptide of TUBB3.
Immunogen	A synthetic peptide (conjugated with KLH) corresponding to residues surrounding S444 of human TUBB3.
Host	Rabbit
Reactivity	Human, Mouse, Rat
Specificity	This sequence is not found in β II or β III-tubulin isotypes, but is well conserved in β III-tubulins from rat and mouse.
Form	Liquid
Quality Control Testing	Antibody Reactive Against Synthetic Peptide.
Recommend Usage	ELISA (1:2000) Immunocytochemistry (1:100) Western Blot (1:1000) The optimal working dilution should be determined by the end user.
Storage Buffer	In PBS (50% glycerol, 1 mg/mL BSA, 0.05% sodium azide)

Storage Instruction

Store at -20°C.
Aliquot to avoid repeated freezing and thawing.

Note

This product contains sodium azide: a POISONOUS AND HAZARDOUS SUBSTANCE which should be handled by trained staff only.

Applications

- Western Blot (Tissue lysate)

Western blot analysis of mouse brain. The blot was probed with TUBB3 polyclonal antibody (Cat # PAB7877).

- Immunocytochemistry

- Enzyme-linked Immunoabsorbent Assay

Gene Info — TUBB3

Entrez GeneID[10381](#)**Gene Name**

TUBB3

Gene Alias

MC1R, TUBB4, beta-4

Gene Description

tubulin, beta 3

Omim ID[602661](#)**Gene Ontology**[Hyperlink](#)**Gene Summary**

O

Other Designations

tubulin, beta, 4

Publication Reference

- [Microtubule regulation in mitosis: tubulin phosphorylation by the cyclin-dependent kinase Cdk1.](#)

Fourest-Lieuvin A, Peris L, Gache V, Garcia-Saez I, Juillan-Binard C, Lantiez V, Job D.

Molecular Biology of the Cell 2005 Dec; 17(3):1041.

- [Post-translational modifications regulate microtubule function.](#)

Westermann S, Weber K.

Nature Reviews. Molecular Cell Biology 2003 Dec; 4(12):938.

- [Expression of unphosphorylated class III beta-tubulin isotype in neuroepithelial cells demonstrates neuroblast commitment and differentiation.](#)

Fanarraga ML, Avila J, Zabala JC.

The European Journal of Neuroscience 1999 Feb; 11(2):517.

Application: WB, ELISA, Mouse, Mouse brain tubulin

Pathway

- [Gap junction](#)
- [Pathogenic Escherichia coli infection - EHEC](#)