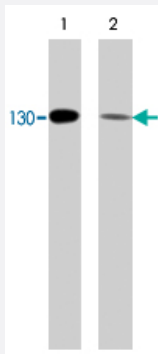


CDH2 polyclonal antibody

Catalog # PAB7876

Size 100 uL

Applications



Western Blot (Cell lysate)

Western blot of human endothelial cells untreated (lane 1) or treated with pervanadate (1 mM) for 30 min (lane 2). The blots were probed with CDH2 polyclonal antibody (Cat # PAB7876).

Specification

Product Description	Rabbit polyclonal antibody raised against synthetic peptide of CDH2.
Immunogen	A synthetic peptide corresponding to residues surrounding Y820 of human CDH2.
Host	Rabbit
Reactivity	Human, Mouse, Rat
Specificity	This sequence is conserved in rat and mouse N-cadherin, and has three amino acid differences from the conserved region in R-cadherin.
Form	Liquid
Quality Control Testing	Antibody Reactive Against Synthetic Peptide.
Recommend Usage	ELISA (1:2000) Western Blot (1:1000) The optimal working dilution should be determined by the end user.
Storage Buffer	In PBS (50% glycerol, 1 mg/mL BSA, 0.05% sodium azide)

Storage Instruction

Store at -20°C.
Aliquot to avoid repeated freezing and thawing.

Note

This product contains sodium azide: a POISONOUS AND HAZARDOUS SUBSTANCE which should be handled by trained staff only.

Applications

- Western Blot (Cell lysate)

Western blot of human endothelial cells untreated (lane 1) or treated with pervanadate (1 mM) for 30 min (lane 2). The blots were probed with CDH2 polyclonal antibody (Cat # PAB7876).

- Enzyme-linked Immunoabsorbent Assay

Gene Info — CDH2

Entrez GeneID [1000](#)

Protein Accession# [P19022](#)

Gene Name CDH2

Gene Alias CD325, CDHN, CDw325, NCAD

Gene Description cadherin 2, type 1, N-cadherin (neuronal)

Omim ID [114020](#)

Gene Ontology [Hyperlink](#)

Gene Summary

This gene is a classical cadherin from the cadherin superfamily. The encoded protein is a calcium dependent cell-cell adhesion glycoprotein comprised of five extracellular cadherin repeats, a trans membrane region and a highly conserved cytoplasmic tail. The protein functions during gastrulation and is required for establishment of left-right asymmetry. At certain central nervous system synapses, presynaptic to postsynaptic adhesion is mediated at least in part by this gene product. [provided by RefSeq]

Other Designations

N-cadherin 1|cadherin 2, N-cadherin (neuronal)|cadherin 2, type 1|calcium-dependent adhesion protein, neuronal|neural cadherin

Publication Reference

- [Otic Neurogenesis in *Xenopus laevis*: Proliferation, Differentiation, and the Role of Eya1.](#)

Suad Hamdan Almasoudi, Gerhard Schlosser.

Frontiers in Neuroanatomy 2023 Sep; 15:722374.

Application: IF, Frog, Frog embryos

- [Involvement of Src family kinases in N-cadherin phosphorylation and beta-catenin dissociation during transendothelial migration of melanoma cells.](#)

Qi J, Wang J, Romanyuk O, Siu CH.

Molecular Biology of the Cell 2005 Dec; 17(3):1261.

- [Identification of cadherin tyrosine residues that are phosphorylated and mediate Shc association.](#)

Xu Y, Carpenter G.

Journal of Cellular Biochemistry 1999 Nov; 75(2):264.

Application: WB-Re, Recombinant proteins

- [Interaction of the adaptor protein Shc and the adhesion molecule cadherin.](#)

Xu Y, Guo DF, Davidson M, Inagami T, Carpenter G.

The Journal of Biological Chemistry 1997 May; 272(21):13463.

Pathway

- [Arrhythmogenic right ventricular cardiomyopathy \(ARVC\)](#)
- [Cell adhesion molecules \(CAMs\)](#)

Disease

- [Cleft Lip](#)
- [Cleft Palate](#)
- [Esophageal Neoplasms](#)
- [Genetic Predisposition to Disease](#)
- [Head and Neck Neoplasms](#)
- [Laryngeal Neoplasms](#)
- [Mouth Neoplasms](#)

- [Pharyngeal Neoplasms](#)
- [Tobacco Use Disorder](#)
- [Tooth Abnormalities](#)