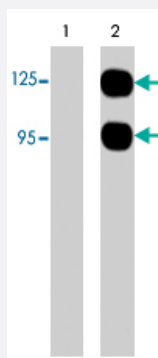


# SEMA3A polyclonal antibody

Catalog # PAB7868

Size 100 uL

## Applications



### Western Blot

Western blots of neonatal rat brain (lane 1) and human recombinant SEMA3A chimera (95/125 kDa) (lane 2). Blots were probed with SEMA3A polyclonal antibody (Cat # PAB7868). The antibodies recognize both the 95 kDa and 125 kDa forms of the recombinant SEMA3A.

## Specification

<b>Product Description</b>	Rabbit polyclonal antibody raised against synthetic peptide of SEMA3A.
<b>Immunogen</b>	A synthetic peptide corresponding to C-terminus of human SEMA3A.
<b>Host</b>	Rabbit
<b>Reactivity</b>	Human
<b>Specificity</b>	The sequence used has two amino acid differences from rat and mouse Sema3A, and has low homology to other semaphorin family members.
<b>Form</b>	Liquid
<b>Quality Control Testing</b>	Antibody Reactive Against Synthetic Peptide.
<b>Recommend Usage</b>	ELISA (1:2000) Western Blot (1:500) The optimal working dilution should be determined by the end user.
<b>Storage Buffer</b>	In PBS (50% glycerol, 1 mg/mL BSA, 0.05% sodium azide)

**Storage Instruction**

Store at -20°C.  
Aliquot to avoid repeated freezing and thawing.

**Note**

This product contains sodium azide: a POISONOUS AND HAZARDOUS SUBSTANCE which should be handled by trained staff only.

## Applications

- Western Blot

Western blots of neonatal rat brain (lane 1) and human recombinant SEMA3A chimera (95/125 kDa) (lane 2). Blots were probed with SEMA3A polyclonal antibody (Cat # PAB7868). The antibodies recognize both the 95 kDa and 125 kDa forms of the recombinant SEMA3A.

- Enzyme-linked Immunoabsorbent Assay

## Gene Info — SEMA3A

**Entrez GeneID** [10371](#)

**Gene Name** SEMA3A

**Gene Alias** Hsema-I, Hsema-III, MGC133243, SEMA1, SEMAD, SEMAIII, SEMAL, SemD, coll-1

**Gene Description** sema domain, immunoglobulin domain (Ig), short basic domain, secreted, (semaphorin) 3A

**Omim ID** [603961](#)

**Gene Ontology** [Hyperlink](#)

**Gene Summary** This gene is a member of the semaphorin family and encodes a protein with an Ig-like C2-type (immunoglobulin-like) domain, a PSI domain and a Sema domain. This secreted protein can function as either a chemorepulsive agent, inhibiting axonal outgrowth, or as a chemoattractive agent, stimulating the growth of apical dendrites. In both cases, the protein is vital for normal neuronal pattern development. Increased expression of this protein is associated with schizophrenia and is seen in a variety of human tumor cell lines. Also, aberrant release of this protein is associated with the progression of Alzheimer's disease. [provided by RefSeq]

**Other Designations** collapsin 1|semaphorin 3A|semaphorin D|semaphorin III|semaphorin L|semaphorin-like

## Publication Reference

- [Emerging roles for semaphorins in neural regeneration.](#)

Pasterkamp RJ, Verhaagen J.

Brain Research. Brain Research Reviews 2001 Mar; 35(1):36.

- [The semaphorin genes encode a family of transmembrane and secreted growth cone guidance molecules.](#)

Kolodkin AL, Matthes DJ, Goodman CS.

Cell 1993 Dec; 75(7):1389.

- [Collapsin: a protein in brain that induces the collapse and paralysis of neuronal growth cones.](#)

Luo Y, Raible D, Raper JA.

Cell 1993 Oct; 75(2):217.

## Pathway

- [Axon guidance](#)

## Disease

- [Alzheimer Disease](#)
- [Genetic Predisposition to Disease](#)
- [Memory](#)
- [Schizophrenia](#)
- [Schizophrenic Psychology](#)
- [Tobacco Use Disorder](#)