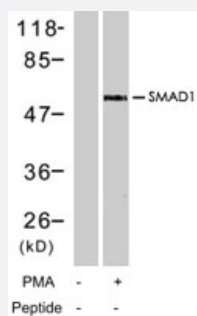


# SMAD1 (phospho S465) polyclonal antibody

Catalog # PAB7758      Size 100 uL

## Applications



### Western Blot (Cell lysate)

Western blot analysis of extracts from 293 cells treated with PMA (200 uM, 30 min) , using SMAD1 (phospho S465) polyclonal antibody (Cat # PAB7758).

## Specification

<b>Product Description</b>	Rabbit polyclonal antibody raised against synthetic phosphopeptide of SMAD1.
<b>Immunogen</b>	Synthetic phosphopeptide corresponding to residues surrounding S465 of human SMAD1.
<b>Host</b>	Rabbit
<b>Theoretical MW (kDa)</b>	55
<b>Reactivity</b>	Human, Mouse, Rat
<b>Form</b>	Liquid
<b>Purification</b>	Immunoaffinity purification
<b>Concentration</b>	1 mg/mL
<b>Quality Control Testing</b>	Antibody Reactive Against Synthetic Peptide.
<b>Recommend Usage</b>	Western Blot (1:500-1:1000) The optimal working dilution should be determined by the end user.
<b>Storage Buffer</b>	In PBS (without Mg <sup>2+</sup> and Ca <sup>2+</sup> ), 150 mM NaCl, pH 7.4 (50% glycerol, 0.02% sodium azide)

**Storage Instruction**

Store at -20°C.  
Aliquot to avoid repeated freezing and thawing.

**Note**

This product contains sodium azide: a POISONOUS AND HAZARDOUS SUBSTANCE which should be handled by trained staff only.

## Applications

- Western Blot (Cell lysate)

Western blot analysis of extracts from 293 cells treated with PMA (200 uM, 30 min) , using SMAD1 (phospho S465) polyclonal antibody (Cat # PAB7758).

## Gene Info — SMAD1

**Entrez GeneID**[4086](#)**Protein Accession#**[Q15797](#)**Gene Name**

SMAD1

**Gene Alias**

BSP1, JV4-1, JV41, MADH1, MADR1

**Gene Description**

SMAD family member 1

**Omim ID**[601595](#)**Gene Ontology**[Hyperlink](#)**Gene Summary**

The protein encoded by this gene belongs to the SMAD, a family of proteins similar to the gene products of the Drosophila gene 'mothers against decapentaplegic' (Mad) and the C. elegans gene Sma. SMAD proteins are signal transducers and transcriptional modulators that mediate multiple signaling pathways. This protein mediates the signals of the bone morphogenetic proteins (BMPs), which are involved in a range of biological activities including cell growth, apoptosis, morphogenesis, development and immune responses. In response to BMP ligands, this protein can be phosphorylated and activated by the BMP receptor kinase. The phosphorylated form of this protein forms a complex with SMAD4, which is important for its function in the transcription regulation. This protein is a target for SMAD-specific E3 ubiquitin ligases, such as SMURF1 and SMURF2, and undergoes ubiquitination and proteasome-mediated degradation. Alternatively spliced transcript variants encoding the same protein have been observed. [provided by RefSeq]

**Other Designations**

MAD, mothers against decapentaplegic homolog 1|Mad-related protein 1|SMAD, mothers against DPP homolog 1|Sma- and Mad-related protein 1|TGF-beta signaling protein 1|mothers against DPP homolog 1|transforming growth factor-beta signaling protein 1

## Pathway

- [TGF-beta signaling pathway](#)

## Disease

- [Cleft Lip](#)
- [Cleft Palate](#)
- [Diabetes Mellitus](#)
- [Diabetic Nephropathies](#)
- [Genetic Predisposition to Disease](#)
- [Head and Neck Neoplasms](#)
- [Hemochromatosis](#)
- [Hypertension](#)
- [Kidney Failure](#)
- [Neoplasm Recurrence](#)
- [Neoplasms](#)
- [Obesity](#)
- [Ovarian Failure](#)
- [Polycystic Ovary Syndrome](#)
- [Puberty](#)
- [Thrombophilia](#)
- [Tobacco Use Disorder](#)