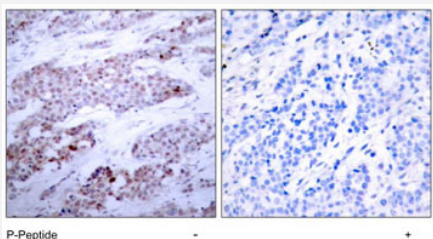


ATF4 (phospho S245) polyclonal antibody

Catalog # PAB7712 Size 100 uL

Applications



Immunohistochemistry (Formalin/PFA-fixed paraffin-embedded sections)

Immunohistochemical analysis of paraffin-embedded human breast carcinoma tissue, using ATF4 (phospho S245) polyclonal antibody (Cat # PAB7712).

Specification

Product Description	Rabbit polyclonal antibody raised against synthetic phosphopeptide of ATF4.
Immunogen	Synthetic phosphopeptide corresponding to residues surrounding S245 of human ATF4.
Host	Rabbit
Theoretical MW (kDa)	45
Reactivity	Human
Form	Liquid
Purification	Immunoaffinity purification
Concentration	1 mg/mL
Quality Control Testing	Antibody Reactive Against Synthetic Peptide.
Recommend Usage	Immunohistochemistry (1:50-1:100) The optimal working dilution should be determined by the end user.
Storage Buffer	In PBS (without Mg^{2+} and Ca^{2+}), 150 mM NaCl, pH 7.4 (50% glycerol, 0.02% sodium azide)

Storage Instruction

Store at -20°C.
Aliquot to avoid repeated freezing and thawing.

Note

This product contains sodium azide: a POISONOUS AND HAZARDOUS SUBSTANCE which should be handled by trained staff only.

Applications

- Immunohistochemistry (Formalin/PFA-fixed paraffin-embedded sections)

Immunohistochemical analysis of paraffin-embedded human breast carcinoma tissue, using ATF4 (phospho S245) polyclonal antibody (Cat # PAB7712).

Gene Info — ATF4

Entrez GeneID[468](#)**Protein Accession#**[P18848](#)**Gene Name**

ATF4

Gene Alias

CREB-2, CREB2, TAXREB67, TXREB

Gene Description

activating transcription factor 4 (tax-responsive enhancer element B67)

Omim ID[604064](#)**Gene Ontology**[Hyperlink](#)**Gene Summary**

This gene encodes a transcription factor that was originally identified as a widely expressed mammalian DNA binding protein that could bind a tax-responsive enhancer element in the LTR of HTLV-1. The encoded protein was also isolated and characterized as the cAMP-response element binding protein 2 (CREB-2). The protein encoded by this gene belongs to a family of DNA-binding proteins that includes the AP-1 family of transcription factors, cAMP-response element binding proteins (CREBs) and CREB-like proteins. These transcription factors share a leucine zipper region that is involved in protein-protein interactions, located C-terminal to a stretch of basic amino acids that functions as a DNA binding domain. Two alternative transcripts encoding the same protein have been described. Two pseudogenes are located on the X chromosome at q28 in a region containing a large inverted duplication. [provided by RefSeq]

Other Designations

activating transcription factor 4|cAMP response element-binding protein 2

Pathway

- [GnRH signaling pathway](#)

- [Long-term potentiation](#)
- [MAPK signaling pathway](#)
- [Neurotrophin signaling pathway](#)
- [Prostate cancer](#)

Disease

- [Bipolar Disorder](#)
- [Genetic Predisposition to Disease](#)
- [Mental Disorders](#)
- [Neuropsychological Tests](#)
- [Schizophrenia](#)