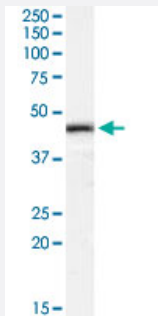


ILF2 polyclonal antibody

Catalog # PAB7568

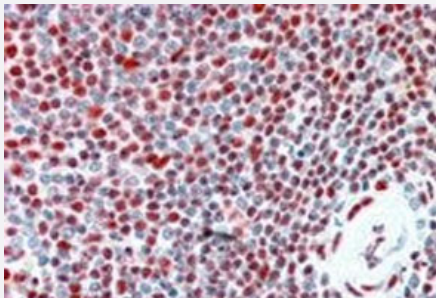
Size 100 ug

Applications



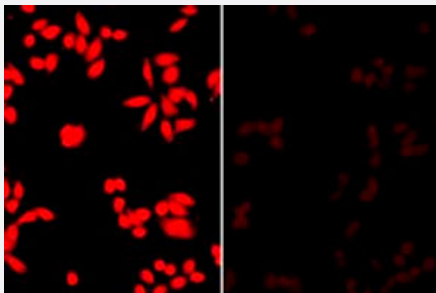
Western Blot (Tissue lysate)

ILF2 polyclonal antibody (Cat # PAB7568) (0.3 ug/mL) staining of human tonsil lysate (35 ug protein in RIPA buffer). Primary incubation was 1 hour. Detected by chemiluminescence.



Immunohistochemistry (Formalin/PFA-fixed paraffin-embedded sections)

ILF2 polyclonal antibody (Cat # PAB7568, 2.5 ug/mL) staining of paraffin embedded human spleen. Steamed antigen retrieval with citrate buffer pH 6, AP-staining.



Immunofluorescence

ILF2 polyclonal antibody (Cat # PAB7568) (2.5 ug/mL) staining of parental and stable knock-down cell line (fixed by 4% formaldehyde, permeabilized by Triton X100). Primary incubation was 1.5 hour. Detected by fluorescence.

Specification

Product Description

Goat polyclonal antibody raised against synthetic peptide of ILF2.

Immunogen

A synthetic peptide corresponding to human ILF2.

Sequence	C-EKAYEKPPEKKEG
Host	Goat
Theoretical MW (kDa)	43.1
Reactivity	Human
Form	Liquid
Purification	Antigen affinity purification
Concentration	0.5 mg/mL
Quality Control Testing	Antibody Reactive Against Synthetic Peptide.
Recommend Usage	ELISA (1:4000-1:16000) Western blot (0.03-0.1 ug/mL) Immunohistochemistry (Formalin/PFA-fixed paraffin-embedded sections) (3-5 ug/mL) Immunofluorescence (2-3 ug/mL) The optimal working dilution should be determined by the end user.
Storage Buffer	In Tris saline, pH 7.3 (0.5% BSA, 0.02% sodium azide)
Storage Instruction	Store at -20°C. Aliquot to avoid repeated freezing and thawing.
Note	This product contains sodium azide: a POISONOUS AND HAZARDOUS SUBSTANCE which should be handled by trained staff only.

Applications

- Western Blot (Tissue lysate)

ILF2 polyclonal antibody (Cat # PAB7568) (0.3 ug/mL) staining of human tonsil lysate (35 ug protein in RIPA buffer). Primary incubation was 1 hour. Detected by chemiluminescence.

- Immunohistochemistry (Formalin/PFA-fixed paraffin-embedded sections)

ILF2 polyclonal antibody (Cat # PAB7568, 2.5 ug/mL) staining of paraffin embedded human spleen. Steamed antigen retrieval with citrate buffer pH 6, AP-staining.

- Immunofluorescence

ILF2 polyclonal antibody (Cat # PAB7568) (2.5 ug/mL) staining of parental and stable knock-down cell line (fixed by 4% formaldehyde, permeabilized by Triton X100). Primary incubation was 1.5 hour. Detected by fluorescence.

- Enzyme-linked Immunoabsorbent Assay

Gene Info — ILF2

Entrez GeneID [3608](#)

Protein Accession# [NP_004506.2](#)

Gene Name ILF2

Gene Alias MGC8391, NF45, PRO3063

Gene Description interleukin enhancer binding factor 2, 45kDa

Omim ID [603181](#)

Gene Ontology [Hyperlink](#)

Gene Summary Nuclear factor of activated T-cells (NFAT) is a transcription factor required for T-cell expression of the interleukin 2 gene. NFAT binds to a sequence in the interleukin 2 gene enhancer known as the antigen receptor response element 2. In addition, NFAT can bind RNA and is an essential component for encapsidation and protein priming of hepatitis B viral polymerase. NFAT is a heterodimer of 45 kDa and 90 kDa proteins, the smaller of which is the product of this gene. The encoded protein binds strongly to the 90 kDa protein and stimulates its ability to enhance gene expression. [provided by RefSeq]

Other Designations interleukin enhancer binding factor 2|nuclear factor of activated T-cells, 45-kDa

Publication Reference

- [NF90-NF45 is essential for \$\beta\$ cell compensation under obesity-inducing metabolic stress through suppression of p53 signaling pathway.](#)

Sylvia Lai, Takuma Higuchi, Masayuki Tsuda, Yasunori Sugiyama, Keiko Morisawa, Taketoshi Taniguchi and Shuji Sakamoto.
Scientific Reports 2022 May; 12(1):8837.

Application: IHC-P, Mouse, mouse pancreas

- [A protein interaction network for pluripotency of embryonic stem cells.](#)

Wang J, Rao S, Chu J, Shen X, Levasseur DN, Theunissen TW, Orkin SH.
Nature 2006 Nov; 444(7117):364.