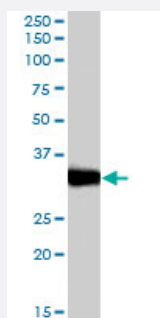


LDHC polyclonal antibody

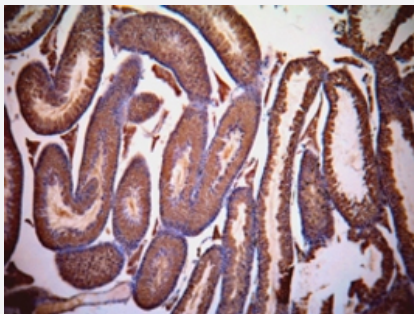
Catalog # PAB7508 Size 100 ug

Applications



Western Blot (Tissue lysate)

LDHC polyclonal antibody (Cat # PAB7508) (0.03 ug/mL) staining of mouse testis lysate (35 ug protein in RIPA buffer). Primary incubation was 1 hour. Detected by chemiluminescence.



Immunohistochemistry (Formalin/PFA-fixed paraffin-embedded sections)

LDHC polyclonal antibody (Cat # PAB7508) (1 ug/mL) staining of paraffin embedded mouse testis. Data kindly provided by Dr. Erwin Goldberg, Northwestern University, Evanston, IL USA.

Specification

Product Description	Goat polyclonal antibody raised against synthetic peptide of LDHC.
Immunogen	A synthetic peptide corresponding to amino acids 217-231 of human LDHC.
Sequence	C-KLGTDSDKEHWKNIH
Host	Goat
Theoretical MW (kDa)	36.3
Reactivity	Mouse
Specificity	Both variants represent identical product (NP_002292.1 and NP_059144.1).

Form	Liquid
Purification	Antigen affinity purification
Concentration	0.5 mg/mL
Quality Control Testing	Antibody Reactive Against Synthetic Peptide.
Recommend Usage	ELISA (1:16000) Western Blot (0.03-0.1 ug/mL) The optimal working dilution should be determined by the end user.
Storage Buffer	In Tris saline, pH 7.3 (0.5% BSA, 0.02% sodium azide)
Storage Instruction	Store at -20°C. Aliquot to avoid repeated freezing and thawing.
Note	This product contains sodium azide: a POISONOUS AND HAZARDOUS SUBSTANCE which should be handled by trained staff only.

Applications

- Western Blot (Tissue lysate)

LDHC polyclonal antibody (Cat # PAB7508) (0.03 ug/mL) staining of mouse testis lysate (35 ug protein in RIPA buffer). Primary incubation was 1 hour. Detected by chemiluminescence.

- Immunohistochemistry (Formalin/PFA-fixed paraffin-embedded sections)

LDHC polyclonal antibody (Cat # PAB7508) (1 ug/mL) staining of paraffin embedded mouse testis. Data kindly provided by Dr. Erwin Goldberg, Northwestern University, Evanston, IL USA.

- Enzyme-linked Immunoabsorbent Assay

Gene Info — LDHC

Entrez GeneID	3948
Protein Accession#	NP_002292.1;NP_059144.1
Gene Name	LDHC
Gene Alias	CT32, LDH3, LDHX, MGC111073
Gene Description	lactate dehydrogenase C
Omim ID	150150

Gene Ontology

[Hyperlink](#)

Gene Summary

Lactate dehydrogenase C catalyzes the conversion of L-lactate and NAD to pyruvate and NADH in the final step of anaerobic glycolysis. LDHC is testis-specific and belongs to the lactate dehydrogenase family. Two transcript variants have been detected which differ in the 5' untranslated region. [provided by RefSeq]

Other Designations

L-lactate dehydrogenase C|cancer/testis antigen 32

Publication Reference

- [Increased serum lactate dehydrogenase isoenzymes in Ph-negative chronic myeloproliferative diseases: a metabolic adaptation?](#)

Mazzotta S, Guerranti R, Gozzetti A, Bucalossi A, Bocchia M, Sammassimo S, Petralia S, Ogueli GI, Lauria F.
Hematology 2006 Aug; 11(4):239.

Application: Func, Human, Serum

Pathway

- [Cysteine and methionine metabolism](#)
- [Glycolysis / Gluconeogenesis](#)
- [Metabolic pathways](#)
- [Propanoate metabolism](#)
- [Pyruvate metabolism](#)