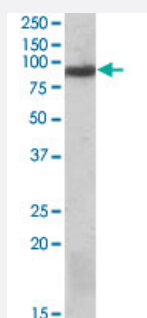


# VPS35 polyclonal antibody

Catalog # PAB7499

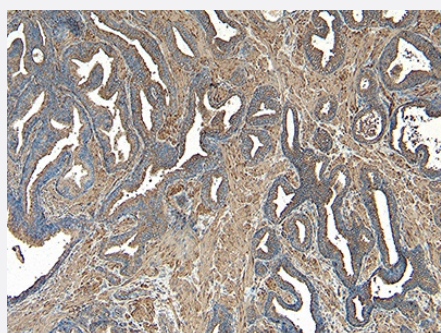
Size 100 ug

## Applications



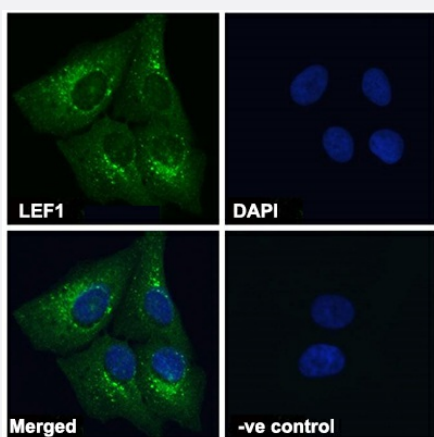
### Western Blot (Tissue lysate)

VPS35 polyclonal antibody (Cat # PAB7499) staining (1 ug/mL) of human cerebellum lysate (RIPA buffer, 35 ug total protein per lane) . Primary incubated for 1 hour. Detected by western blot using chemiluminescence.



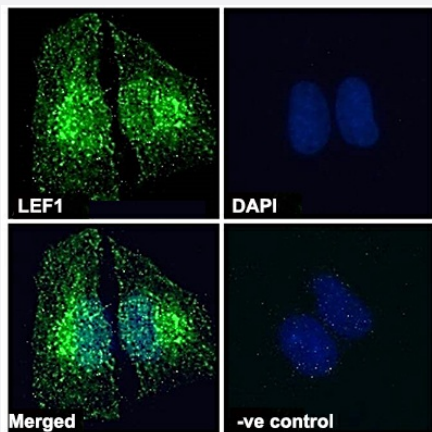
### Immunohistochemistry (Formalin/PFA-fixed paraffin-embedded sections)

VPS35 polyclonal antibody (Cat # PAB7499) (8 ug/mL) staining of paraffin embedded Human Prostate. Heat induced antigen retrieval with citrate buffer pH 6, HRP-staining.



### Immunofluorescence

VPS35 polyclonal antibody (Cat # PAB7499) Immunofluorescence analysis of paraformaldehyde fixed U2OS cells, permeabilized with 0.15% Triton. Primary incubation 1hr (10 ug/mL) followed by Alexa Fluor 488 secondary antibody (2 ug/mL), showing cytoplasmic/vesicle staining. The nuclear stain is DAPI (blue). Negative control: Unimmunized goat IgG (10 ug/mL) followed by Alexa Fluor 488 secondary antibody (2 ug/mL).



## Immunofluorescence

VPS35 polyclonal antibody (Cat # PAB7499) Immunofluorescence analysis of paraformaldehyde fixed HEK293 cells, permeabilized with 0.15% Triton. Primary incubation 1hr (10 ug/mL) followed by Alexa Fluor 488 secondary antibody (2 ug/mL), showing cytoplasmic/vesicle staining. The nuclear stain is DAPI (blue). Negative control: Unimmunized goat IgG (10 ug/mL) followed by Alexa Fluor 488 secondary antibody (2 ug/mL).

## Specification

Product Description	Goat polyclonal antibody raised against synthetic peptide of VPS35.
Immunogen	A synthetic peptide corresponding to C-terminus of human VPS35.
Sequence	C-SPESEGPYIEGLIL
Host	Goat
Theoretical MW (kDa)	91
Reactivity	Human
Specificity	There is a hypothetical protein called similar to vacuolar protein sorting 35 (XP_040192.1), which is virtually identical.
Form	Liquid
Purification	Antigen affinity purification
Concentration	0.5 mg/mL
Recommend Usage	ELISA (1:128000) Immunohistochemistry (8 ug/mL) Immunofluorescence (10 ug/mL) Western Blot (0.03-0.1 ug/mL) The optimal working dilution should be determined by the end user.
Storage Buffer	In Tris saline, pH 7.3 (0.5% BSA, 0.02% sodium azide)
Storage Instruction	Store at -20°C. Aliquot to avoid repeated freezing and thawing.

**Note**

This product contains sodium azide: a POISONOUS AND HAZARDOUS SUBSTANCE which should be handled by trained staff only.

## Applications

- Western Blot (Tissue lysate)

VPS35 polyclonal antibody (Cat # PAB7499) staining (1 ug/mL) of human cerebellum lysate (RIPA buffer, 35 ug total protein per lane) . Primary incubated for 1 hour. Detected by western blot using chemiluminescence.

- Immunohistochemistry (Formalin/PFA-fixed paraffin-embedded sections)

VPS35 polyclonal antibody (Cat # PAB7499) (8 ug/mL) staining of paraffin embedded Human Prostate. Heat induced antigen retrieval with citrate buffer pH 6, HRP-staining.

- Immunofluorescence

VPS35 polyclonal antibody (Cat # PAB7499) Immunofluorescence analysis of paraformaldehyde fixed U2OS cells, permeabilized with 0.15% Triton. Primary incubation 1hr (10 ug/mL) followed by Alexa Fluor 488 secondary antibody (2 ug/mL), showing cytoplasmic/vesicle staining. The nuclear stain is DAPI (blue). Negative control: Unimmunized goat IgG (10 ug/mL) followed by Alexa Fluor 488 secondary antibody (2 ug/mL).

- Immunofluorescence

VPS35 polyclonal antibody (Cat # PAB7499) Immunofluorescence analysis of paraformaldehyde fixed HEK293 cells, permeabilized with 0.15% Triton. Primary incubation 1hr (10 ug/mL) followed by Alexa Fluor 488 secondary antibody (2 ug/mL), showing cytoplasmic/vesicle staining. The nuclear stain is DAPI (blue). Negative control: Unimmunized goat IgG (10 ug/mL) followed by Alexa Fluor 488 secondary antibody (2 ug/mL).

- Enzyme-linked Immunoabsorbent Assay

## Gene Info — VPS35

Entrez GeneID	<a href="#">55737</a>
Protein Accession#	<a href="#">NP_060676.2</a>
Gene Name	VPS35
Gene Alias	DKFZp434E1211, DKFZp434P1672, FLJ10752, FLJ13588, FLJ20388, MEM3
Gene Description	vacuolar protein sorting 35 homolog (S. cerevisiae)
Omim ID	<a href="#">606931</a>
Gene Ontology	<a href="#">Hyperlink</a>

## Gene Summary

This gene belongs to a group of vacuolar protein sorting (VPS) genes. The encoded protein is a component of a large multimeric complex, termed the retromer complex, involved in retrograde transport of proteins from endosomes to the trans-Golgi network. The close structural similarity between the yeast and human proteins that make up this complex suggests a similarity in function. Expression studies in yeast and mammalian cells indicate that this protein interacts directly with VPS35, which serves as the core of the retromer complex. [provided by RefSeq]

## Other Designations

maternal-embryonic 3|vacuolar protein sorting 35

## Publication Reference

- [Tumor-associated autoantibodies from mouse breast cancer models are found in serum of breast cancer patients.](#)

Sasha E Stanton, Ekram Gad, Erik Ramos, Lauren Corulli, James Annis, Jennifer Childs, Hiroyuki Katayama, Samir Hanash, Jeffrey Marks, Mary L Disis.

NPJ Breast Cancer 2021 May; 7(1):50.

Application: Cap Ab, ELISA, Human, Human serum

- [GOLPH3 modulates mTOR signalling and rapamycin sensitivity in cancer.](#)

Scott KL, Kabbarah O, Liang MC, Ivanova E, Anagnostou V, Wu J, Dhakal S, Wu M, Chen S, Feinberg T, Huang J, Saci A, Widlund HR, Fisher DE, Xiao Y, Rimm DL, Protopopov A, Wong KK, Chin L.

Nature 2009 Jun; 459(7250):1085.

- [EHD1 interacts with retromer to stabilize SNX1 tubules and facilitate endosome-to-Golgi retrieval.](#)

Gokool S, Tattersall D, Seaman MN.

Traffic (Copenhagen, Denmark) 2007 Oct; 8(12):1873.

Application: IF, Human, HeLa cells

- [Sorting by the cytoplasmic domain of the amyloid precursor protein binding receptor SorLA.](#)

Nielsen MS, Gustafsen C, Madsen P, Nyengaard JR, Hermey G, Bakke O, Mari M, Schu P, Pohlmann R, Dennes A, Petersen CM.

Molecular and Cellular Biology 2007 Oct; 27(19):6842.

Application: WB-Tr, Human, HepG2 cells

- [Cloning and characterization of human VPS35 and mouse Vps35 and mapping of VPS35 to human chromosome 16q13-q21.](#)

P Zhang, L Yu, J Gao, Q Fu, F Dai, Y Zhao, L Zheng, S Zhao.

Genomics 2000 Dec; 70(2):253.