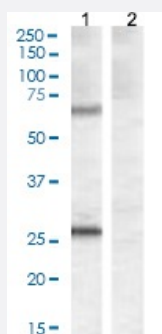


# COL4A3BP polyclonal antibody

Catalog # PAB7393

Size 100 ug

## Applications



### Western Blot (Tissue lysate)

COL4A3BP polyclonal antibody (Cat # PAB7393) (0.5 ug/mL) staining of Mouse Heart lysate (1) + peptide (2) (35 ug protein in RIPA buffer). Detected by chemiluminescence.

## Specification

<b>Product Description</b>	Goat polyclonal antibody raised against synthetic peptide of COL4A3BP.
<b>Immunogen</b>	A synthetic peptide corresponding to human COL4A3BP.
<b>Sequence</b>	DHDSAPLNNRC
<b>Host</b>	Goat
<b>Theoretical MW (kDa)</b>	70.8, 60
<b>Reactivity</b>	Mouse
<b>Specificity</b>	This antibody is expected to recognize both reported isoforms (NP_005704.1 and NP_112729.1).
<b>Form</b>	Liquid
<b>Purification</b>	Antigen affinity purification
<b>Concentration</b>	0.5 mg/mL
<b>Quality Control Testing</b>	Antibody Reactive Against Synthetic Peptide.

<b>Recommend Usage</b>	ELISA (1:32000) Western Blot (0.3-1 ug/mL) The optimal working dilution should be determined by the end user.
<b>Storage Buffer</b>	In Tris saline, pH 7.3 (0.5% BSA, 0.02% sodium azide)
<b>Storage Instruction</b>	Store at -20°C. Aliquot to avoid repeated freezing and thawing.
<b>Note</b>	This product contains sodium azide: a POISONOUS AND HAZARDOUS SUBSTANCE which should be handled by trained staff only.

## Applications

- Western Blot (Tissue lysate)

COL4A3BP polyclonal antibody (Cat # PAB7393) (0.5 ug/mL) staining of Mouse Heart lysate (1) + peptide (2) (35 ug protein in RIPA buffer). Detected by chemiluminescence.

- Enzyme-linked Immunoabsorbent Assay

## Gene Info — COL4A3BP

<b>Entrez GeneID</b>	<a href="#">10087</a>
<b>Protein Accession#</b>	<a href="#">NP_005704.1;NP_112729.1</a>
<b>Gene Name</b>	COL4A3BP
<b>Gene Alias</b>	CERT, CERTL, FLJ20597, GPBP, STARD11
<b>Gene Description</b>	collagen, type IV, alpha 3 (Goodpasture antigen) binding protein
<b>Omim ID</b>	<a href="#">604677</a>
<b>Gene Ontology</b>	<a href="#">Hyperlink</a>
<b>Gene Summary</b>	This gene encodes a kinase that specifically phosphorylates the N-terminal region of the non-collagenous domain of the alpha 3 chain of type IV collagen, known as the Goodpasture antigen. Good pasture disease is the result of an autoimmune response directed at this antigen. One isoform of this protein is also involved in ceramide intracellular transport. Three transcript variants encoding different isoforms have been found for this gene. [provided by RefSeq]
<b>Other Designations</b>	Goodpasture antigen-binding protein OTTHUMP00000128248 OTTHUMP00000128249 START domain containing 11 StAR-related lipid transfer (START) domain containing 11 alpha 3 type IV collagen binding protein ceramide transporter lipid-transfer protein CERTL

## Publication Reference

- [Regulators of mitotic arrest and ceramide metabolism are determinants of sensitivity to paclitaxel and other chemotherapeutic drugs.](#)

Swanton C, Marani M, Pardo O, Warne PH, Kelly G, Sahai E, Elustondo F, Chang J, Temple J, Ahmed AA, Brenton JD, Downward J, Nicke B.

Cancer Cell 2007 Jun; 11(6):498.

Application: WB-Ce, Human, A-549, ADR, HCT-116, MCF-7, MDA, SKOV3, TR cells