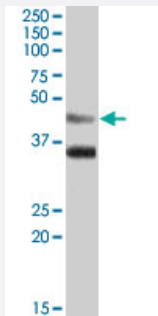


# ARSB polyclonal antibody

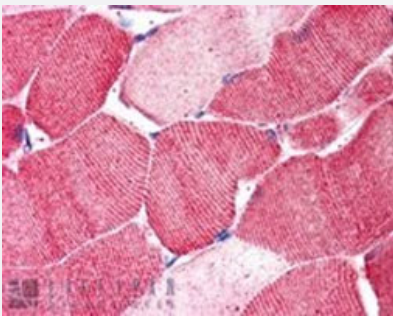
Catalog # PAB7369      Size 100 ug

## Applications



### Western Blot (Tissue lysate)

ARSB polyclonal antibody (Cat # PAB7369) (0.03 ug/mL) staining of human heart lysate (35 ug protein in RIPA buffer). Primary incubation was 1 hour. Detected by chemiluminescence.



### Immunohistochemistry (Formalin/PFA-fixed paraffin-embedded sections)

ARSB polyclonal antibody (Cat # PAB7369, 5 ug/mL) staining of paraffin embedded human skeletal muscle. Steamed antigen retrieval with citrate buffer pH 6, AP-staining.

## Specification

<b>Product Description</b>	Goat polyclonal antibody raised against synthetic peptide of ARSB.
<b>Immunogen</b>	A synthetic peptide corresponding to human ARSB.
<b>Sequence</b>	C-KLARGHTNGTKPLD
<b>Host</b>	Goat
<b>Theoretical MW (kDa)</b>	59.7, 46
<b>Reactivity</b>	Human
<b>Specificity</b>	This antibody is expected to recognize both reported isoforms (NP_000037.2, NP_942002.1).

Form	Liquid
Purification	Antigen affinity purification
Concentration	0.5 mg/mL
Quality Control Testing	Antibody Reactive Against Synthetic Peptide.
Recommend Usage	ELISA (1:64000) Western blot (0.03-0.1 ug/mL) Immunohistochemistry (Formalin/PFA-fixed paraffin-embedded sections) (5-10 ug/mL) The optimal working dilution should be determined by the end user.
Storage Buffer	In Tris saline, pH 7.3 (0.5% BSA, 0.02% sodium azide)
Storage Instruction	Store at -20°C. Aliquot to avoid repeated freezing and thawing.
Note	This product contains sodium azide: a POISONOUS AND HAZARDOUS SUBSTANCE which should be handled by trained staff only.

## Applications

- Western Blot (Tissue lysate)

ARSB polyclonal antibody (Cat # PAB7369) (0.03 ug/mL) staining of human heart lysate (35 ug protein in RIPA buffer). Primary incubation was 1 hour. Detected by chemiluminescence.

- Immunohistochemistry (Formalin/PFA-fixed paraffin-embedded sections)

ARSB polyclonal antibody (Cat # PAB7369, 5 ug/mL) staining of paraffin embedded human skeletal muscle. Steamed antigen retrieval with citrate buffer pH 6, AP-staining.

- Enzyme-linked Immunoabsorbent Assay

## Gene Info — ARSB

Entrez GeneID	<a href="#">411</a>
Protein Accession#	<a href="#">NP_000037.2;NP_942002.1</a>
Gene Name	ARSB
Gene Alias	ASB, G4S, MPS6
Gene Description	arylsulfatase B

Omim ID	<a href="#">253200 611542</a>
Gene Ontology	<a href="#">Hyperlink</a>
Gene Summary	Arylsulfatase B encoded by this gene belongs to the sulfatase family. The arylsulfatase B homodimer hydrolyzes sulfate groups of N-Acetyl-D-galactosamine, chondroitin sulfate, and dermatan sulfate. The protein is targeted to the lysosome. Mucopolysaccharidosis type VI is an autosomal recessive lysosomal storage disorder resulting from a deficiency of arylsulfatase B. Two alternatively spliced transcript variants encoding distinct isoforms have been found for this gene. [provided by RefSeq]
Other Designations	N-acetylgalactosamine-4-sulfatase OTTHUMP00000135268

## Publication Reference

- [Increased arylsulfatase B activity in cystic fibrosis cells following correction of CFTR.](#)

Bhattacharyya S, Look D, Tobacman JK.

Clinica Chimica Acta; International Journal of Clinical Chemistry 2007 May; 380(1-2):122.

## Pathway

- [Glycosaminoglycan degradation](#)
- [Lysosome](#)
- [Metabolic pathways](#)

## Disease

- [Cardiovascular Diseases](#)
- [Diabetes Mellitus](#)
- [Edema](#)
- [Tobacco Use Disorder](#)