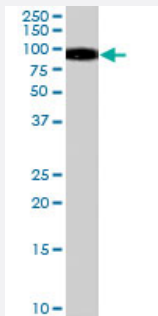


# GSN polyclonal antibody

Catalog # PAB7148

Size 100 ug

## Applications



### Western Blot (Tissue lysate)

GSN polyclonal antibody (Cat # PAB7148) (0.1 ug/mL) staining of human spleen lysate (35 ug protein in RIPA buffer). Primary incubation was 1 hour. Detected by chemiluminescence.

## Specification

<b>Product Description</b>	Goat polyclonal antibody raised against synthetic peptide of GSN.
<b>Immunogen</b>	A synthetic peptide corresponding to human GSN.
<b>Sequence</b>	C-PRLKDKKMDAHP
<b>Host</b>	Goat
<b>Theoretical MW (kDa)</b>	85.7, 80.6
<b>Reactivity</b>	Human
<b>Specificity</b>	This antibody is expected to recognize both reported isoforms (NP_000168.1 and NP_937895.1).
<b>Form</b>	Liquid
<b>Purification</b>	Antigen affinity purification
<b>Concentration</b>	0.5 mg/mL
<b>Quality Control Testing</b>	Antibody Reactive Against Synthetic Peptide.

<b>Recommend Usage</b>	ELISA (1:128000) Western Blot (0.1-0.3 ug/mL) The optimal working dilution should be determined by the end user.
<b>Storage Buffer</b>	In Tris saline, pH 7.3 (0.5% BSA, 0.02% sodium azide)
<b>Storage Instruction</b>	Store at -20°C. Aliquot to avoid repeated freezing and thawing.
<b>Note</b>	This product contains sodium azide: a POISONOUS AND HAZARDOUS SUBSTANCE which should be handled by trained staff only.

## Applications

- Western Blot (Tissue lysate)

GSN polyclonal antibody (Cat # PAB7148) (0.1 ug/mL) staining of human spleen lysate (35 ug protein in RIPA buffer). Primary incubation was 1 hour. Detected by chemiluminescence.

- Enzyme-linked Immunoabsorbent Assay

## Gene Info — GSN

<b>Entrez GeneID</b>	<a href="#">2934</a>
<b>Protein Accession#</b>	<a href="#">NP_000168.1</a> ; <a href="#">NP_937895.1</a>
<b>Gene Name</b>	GSN
<b>Gene Alias</b>	DKFZp313L0718
<b>Gene Description</b>	gelsolin (amyloidosis, Finnish type)
<b>Omim ID</b>	<a href="#">105120</a> <a href="#">137350</a>
<b>Gene Ontology</b>	<a href="#">Hyperlink</a>
<b>Gene Summary</b>	The protein encoded by this gene binds to the "plus" ends of actin monomers and filaments to prevent monomer exchange. The encoded calcium-regulated protein functions in both assembly and disassembly of actin filaments. Defects in this gene are a cause of familial amyloidosis Finnish type (FAF). Multiple transcript variants encoding several different isoforms have been found for this gene. [provided by RefSeq]
<b>Other Designations</b>	OTTHUMP00000022011 OTTHUMP00000162202 gelsolin

## Publication Reference

- [siRNA gelsolin knockdown induces epithelial-mesenchymal transition with a cadherin switch in human mammary epithelial cells.](#)

Tanaka H, Shirkoohi R, Nakagawa K, Qiao H, Fujita H, Okada F, Hamada J, Kuzumaki S, Takimoto M, Kuzumaki N.

International Journal of Cancer 2006 Apr; 118(7):1680.

Application: WB-Tr, Human, MCF10A cells

## Pathway

- [Fc gamma R-mediated phagocytosis](#)
- [Regulation of actin cytoskeleton](#)

## Disease

- [Tobacco Use Disorder](#)