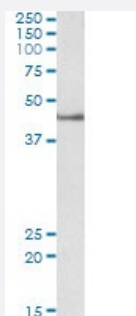


# SEPT1 polyclonal antibody

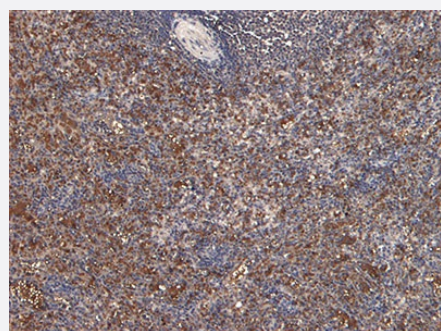
Catalog # PAB7107      Size 100 ug

## Applications



### Western Blot (Cell lysate)

SEPT1 polyclonal antibody (Cat # PAB7107) (2 ug/mL) staining of Jurkat lysate (35 ug protein in RIPA buffer). Detected by chemiluminescence.



### Immunohistochemistry (Formalin/PFA-fixed paraffin-embedded sections)

SEPT1 polyclonal antibody (Cat # PAB7107) (6 ug/mL) staining of paraffin embedded Human Spleen. Heat induced antigen retrieval with citrate buffer pH 6, HRP-staining.

## Specification

<b>Product Description</b>	Goat polyclonal antibody raised against synthetic peptide of SEPT1.
<b>Immunogen</b>	A synthetic peptide corresponding to human SEPT1.
<b>Sequence</b>	C-GARDRASRSKLSRQ
<b>Host</b>	Goat
<b>Theoretical MW (kDa)</b>	42
<b>Form</b>	Liquid
<b>Purification</b>	Antigen affinity purification

Concentration	0.5 mg/mL
Quality Control Testing	Antibody Reactive Against Synthetic Peptide.
Recommend Usage	ELISA (1:32000) Immunohistochemistry (6-8 ug/mL) Western Blot (1-3 ug/mL) The optimal working dilution should be determined by the end user.
Storage Buffer	In Tris saline, pH 7.3 (0.5% BSA, 0.02% sodium azide)
Storage Instruction	Store at -20°C. Aliquot to avoid repeated freezing and thawing.
Note	This product contains sodium azide: a POISONOUS AND HAZARDOUS SUBSTANCE which should be handled by trained staff only.

## Applications

- Western Blot (Cell lysate)

SEPT1 polyclonal antibody (Cat # PAB7107) (2 ug/mL) staining of Jurkat lysate (35 ug protein in RIPA buffer). Detected by chemiluminescence.

- Immunohistochemistry (Formalin/PFA-fixed paraffin-embedded sections)

SEPT1 polyclonal antibody (Cat # PAB7107) (6 ug/mL) staining of paraffin embedded Human Spleen. Heat induced antigen retrieval with citrate buffer pH 6, HRP-staining.

- Enzyme-linked Immunoabsorbent Assay

## Gene Info — SEPT1

Entrez GeneID	<a href="#">1731</a>
Protein Accession#	<a href="#">NP_443070.1</a>
Gene Name	SEPT1
Gene Alias	DIFF6, LARP, MGC20394, PNUTL3, SEP1
Gene Description	sepin 1
Gene Ontology	<a href="#">Hyperlink</a>

**Gene Summary**

This gene is a member of the septin family of GTPases. Members of this family are required for cytokinesis. This gene encodes a protein associated with the tau-based paired helical filament core, and may contribute to the formation of neurofibrillary tangles in Alzheimer's disease. [provided by RefSeq]

**Other Designations**

differentiation 6 (deoxyguanosine triphosphate triphosphohydrolase)|serologically defined breast cancer antigen NY-BR-24

## Publication Reference

- [Septin1, a new interaction partner for human serine/threonine kinase aurora-B.](#)

Qi M, Yu W, Liu S, Jia H, Tang L, Shen M, Yan X, Saiyin H, Lang Q, Wan B, Zhao S, Yu L.

Biochemical and Biophysical Research Communications 2005 Oct; 336(3):994.

Application: WB-Re, Recombinant protein