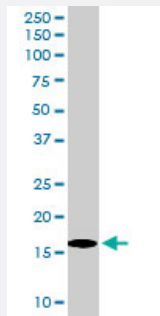


SH2D1A polyclonal antibody

Catalog # PAB6907

Size 100 ug

Applications



Western Blot (Tissue lysate)

SH2D1A polyclonal antibody (Cat # PAB6907) (0.2 ug/mL) staining of human lymph node lysate (35 ug protein in RIPA buffer). Primary incubation was 1 hour. Detected by chemiluminescence.

Specification

Product Description Goat polyclonal antibody raised against synthetic peptide of SH2D1A.

Immunogen A synthetic peptide corresponding to human SH2D1A.

Sequence C-QYPVEKKSSARSTQ

Host Goat

Theoretical MW (kDa) 14.2, 13.9

Reactivity Human

Form Liquid

Purification Antigen affinity purification

Concentration 0.5 mg/mL

Quality Control Testing Antibody Reactive Against Synthetic Peptide.

Recommend Usage
 ELISA (1:32000)
 Western Blot (0.2-0.6 ug/mL)
 The optimal working dilution should be determined by the end user.

Storage Buffer	In Tris saline, pH 7.3 (0.5% BSA, 0.02% sodium azide)
Storage Instruction	Store at -20°C. Aliquot to avoid repeated freezing and thawing.
Note	This product contains sodium azide: a POISONOUS AND HAZARDOUS SUBSTANCE which should be handled by trained staff only.

Applications

- Western Blot (Tissue lysate)

SH2D1A polyclonal antibody (Cat # PAB6907) (0.2 ug/mL) staining of human lymph node lysate (35 ug protein in RIPA buffer). Primary incubation was 1 hour. Detected by chemiluminescence.

- Enzyme-linked Immunoabsorbent Assay

Gene Info — SH2D1A

Entrez GeneID	4068
Protein Accession#	NP_002342.1
Gene Name	SH2D1A
Gene Alias	DSHP, EBVS, FLJ18687, FLJ92177, IMD5, LYP, MTCP1, SAP, XLP, XLPD
Gene Description	SH2 domain protein 1A
Omim ID	300490 308240
Gene Ontology	Hyperlink
Gene Summary	This gene encodes a protein that plays a major role in the bidirectional stimulation of T and B cells . This protein contains an SH2 domain and a short tail. It associates with the signaling lymphocyte -activation molecule, thereby acting as an inhibitor of this transmembrane protein by blocking the recruitment of the SH2-domain-containing signal-transduction molecule SHP-2 to its docking site. This protein can also bind to other related surface molecules that are expressed on activated T, B and NK cells, thereby modifying signal transduction pathways in these cells. Mutations in this gene cause lymphoproliferative syndrome X-linked type 1 or Duncan disease, a rare immunodeficiency characterized by extreme susceptibility to infection with Epstein-Barr virus, with symptoms including severe mononucleosis and malignant lymphoma. Multiple transcript variants encoding different isoforms have been found for this gene. [provided by RefSeq]
Other Designations	Duncan's disease OTTHUMP00000023976 SLAM-associated protein T cell signal transduction molecule SAP signaling lymphocyte activation molecule-associated protein

Publication Reference

- [Differential expression of SAP and EAT-2-binding leukocyte cell-surface molecules CD84, CD150 \(SLAM\), CD229 \(Ly9\) and CD244 \(2B4\).](#)

Romero X, Benitez D, March S, Vilella R, Miralpeix M, Engel P.

Tissue Antigens 2004 Aug; 64(2):132.

Application: Flow Cyt, Human, NK cells, T cells, Thymocytes from peripheral blood

Pathway

- [Natural killer cell mediated cytotoxicity](#)

Disease

- [Common Variable Immunodeficiency](#)
- [Epstein-Barr Virus Infections](#)
- [Genetic Predisposition to Disease](#)
- [Immunologic Deficiency Syndromes](#)
- [Infectious Mononucleosis](#)
- [Lymphoma](#)
- [Lymphoproliferative Disorders](#)
- [Severe Combined Immunodeficiency](#)