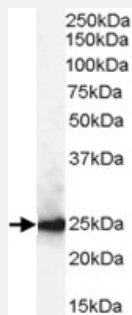


CBX1 polyclonal antibody

Catalog # PAB6884

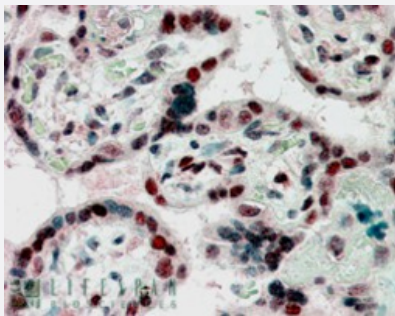
Size 100 ug

Applications



Western Blot (Cell lysate)

CBX1 polyclonal antibody (Cat # PAB6884) (0.3 ug/mL) staining of A-431 lysate (35 ug protein in RIPA buffer). Primary incubation was 1 hour. Detected by chemiluminescence.



Immunohistochemistry (Formalin/PFA-fixed paraffin-embedded sections)

CBX1 polyclonal antibody (Cat # PAB6884) (2.5 ug/mL) staining of paraffin embedded Human Placenta. Steamed antigen retrieval with citrate buffer pH 6, AP-staining.

Specification

Product Description	Goat polyclonal antibody raised against synthetic peptide of CBX1.
Immunogen	A synthetic peptide corresponding to human CBX1.
Sequence	C-QSQKTAHETDKSE
Host	Goat
Theoretical MW (kDa)	21.4
Reactivity	Human
Form	Liquid

Purification	Antigen affinity purification
Concentration	0.5 mg/mL
Quality Control Testing	Antibody Reactive Against Synthetic Peptide.
Recommend Usage	ELISA (1:32000) Western blot (0.3-1.0 ug/mL) Immunohistochemistry (Formalin/PFA-fixed paraffin-embedded sections) (2-3 ug/mL) The optimal working dilution should be determined by the end user.
Storage Buffer	In Tris saline, pH 7.3 (0.5% BSA, 0.02% sodium azide)
Storage Instruction	Store at -20°C. Aliquot to avoid repeated freezing and thawing.
Note	This product contains sodium azide: a POISONOUS AND HAZARDOUS SUBSTANCE which should be handled by trained staff only.

Applications

- Western Blot (Cell lysate)

CBX1 polyclonal antibody (Cat # PAB6884) (0.3 ug/mL) staining of A-431 lysate (35 ug protein in RIPA buffer). Primary incubation was 1 hour. Detected by chemiluminescence.

- Immunohistochemistry (Formalin/PFA-fixed paraffin-embedded sections)

CBX1 polyclonal antibody (Cat # PAB6884) (2.5 ug/mL) staining of paraffin embedded Human Placenta. Steamed antigen retrieval with citrate buffer pH 6, AP-staining.

- Enzyme-linked Immunoabsorbent Assay

Gene Info — CBX1

Entrez GeneID	10951
Protein Accession#	NP_006798.1
Gene Name	CBX1
Gene Alias	CBX, HP1-BETA, HP1Hs-beta, HP1Hsbeta, M31, MOD1, p25beta
Gene Description	chromobox homolog 1 (HP1 beta homolog Drosophila)
Omim ID	604511

Gene Ontology

[Hyperlink](#)

Gene Summary

This gene encodes a highly conserved nonhistone protein, which is a member of the heterochromatin protein family. The protein is enriched in the heterochromatin and associated with centromeres. The protein has a single N-terminal chromodomain which can bind to histone proteins via methylated lysine residues, and a C-terminal chromo shadow-domain (CSD) which is responsible for the homodimerization and interaction with a number of chromatin-associated nonhistone proteins. The protein may play an important role in the epigenetic control of chromatin structure and gene expression. Several related pseudogenes are located on chromosomes 1, 3, and X. Multiple alternatively spliced variants, encoding the same protein, have been identified. [provided by RefSeq]

Other Designations

heterochromatin protein 1-beta|heterochromatin protein p25 beta|modifier 1 protein

Publication Reference

- [Human heterochromatin protein 1 isoforms HP1\(Hsalpha\) and HP1\(Hsbeta\) interfere with hTERT-telomere interactions and correlate with changes in cell growth and response to ionizing radiation.](#)

Sharma GG, Hwang KK, Pandita RK, Gupta A, Dhar S, Parenteau J, Agarwal M, Worman HJ, Wellinger RJ, Pandita TK.

Molecular and Cellular Biology 2003 Nov; 23(22):8363.

Application: WB, Human, ECR-293 cells