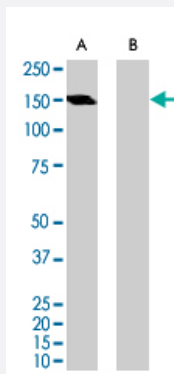


# ERBB3 polyclonal antibody

Catalog # PAB6854

Size 100 ug

## Applications



### Western Blot (Cell lysate)

ERBB3 polyclonal antibody (Cat # PAB6854) (0.1 ug/mL) staining of Jurkat lysate (35 ug protein in RIPA buffer) with (B) and without (A) blocking with the immunising peptide. Primary incubation was 1 hour. Detected by chemiluminescence.

## Specification

**Product Description** Goat polyclonal antibody raised against synthetic peptide of ERBB3.

**Immunogen** A synthetic peptide corresponding to human ERBB3.

**Sequence** C-HSRLFPKANAQRT

**Host** Goat

**Theoretical MW (kDa)** 148,

**Reactivity** Human

**Specificity** This antibody is expected to recognize isoform 1 (NP\_001973.2) only.

**Form** Liquid

**Purification** Antigen affinity purification

**Concentration** 0.5 mg/mL

**Quality Control Testing** Antibody Reactive Against Synthetic Peptide.

<b>Recommend Usage</b>	ELISA (1:32000) Western Blot (0.1-0.3 ug/mL) The optimal working dilution should be determined by the end user.
<b>Storage Buffer</b>	In Tris saline, pH 7.3 (0.5% BSA, 0.02% sodium azide)
<b>Storage Instruction</b>	Store at -20°C. Aliquot to avoid repeated freezing and thawing.
<b>Note</b>	This product contains sodium azide: a POISONOUS AND HAZARDOUS SUBSTANCE which should be handled by trained staff only.

## Applications

- Western Blot (Cell lysate)

ERBB3 polyclonal antibody (Cat # PAB6854) (0.1 ug/mL) staining of Jurkat lysate (35 ug protein in RIPA buffer) with (B) and without (A) blocking with the immunising peptide. Primary incubation was 1 hour. Detected by chemiluminescence.

- Enzyme-linked Immunoabsorbent Assay

## Gene Info — ERBB3

<b>Entrez GeneID</b>	<a href="#">2065</a>
<b>Protein Accession#</b>	<a href="#">NP_001973.2</a>
<b>Gene Name</b>	ERBB3
<b>Gene Alias</b>	ErbB-3, HER3, LCCS2, MDA-BF-1, MGC88033, c-erbB-3, c-erbB3, erbB3-S, p180-ErbB3, p45-sErbB3, p85-sErbB3
<b>Gene Description</b>	v-erb-b2 erythroblastic leukemia viral oncogene homolog 3 (avian)
<b>Omim ID</b>	<a href="#">190151</a> <a href="#">607598</a>
<b>Gene Ontology</b>	<a href="#">Hyperlink</a>

**Gene Summary**

This gene encodes a member of the epidermal growth factor receptor (EGFR) family of receptor tyrosine kinases. This membrane-bound protein has a neuregulin binding domain but not an active kinase domain. It therefore can bind this ligand but not convey the signal into the cell through protein phosphorylation. However, it does form heterodimers with other EGF receptor family members which do have kinase activity. Heterodimerization leads to the activation of pathways which lead to cell proliferation or differentiation. Amplification of this gene and/or overexpression of its protein have been reported in numerous cancers, including prostate, bladder, and breast tumors. Alternative transcriptional splice variants encoding different isoforms have been characterized. One isoform lacks the intermembrane region and is secreted outside the cell. This form acts to modulate the activity of the membrane-bound form. Additional splice variants have also been reported, but they have not been thoroughly characterized. [provided by RefSeq]

**Other Designations**

erbB-3|lethal congenital contracture syndrome 2|v-erb-b2 avian erythroblastic leukemia viral oncogene homolog 3

**Publication Reference**

- [Tyrosine phosphorylation of PYK2 mediates heregulin-induced glioma invasion: novel heregulin/HER3-stimulated signaling pathway in glioma.](#)

van der Horst EH, Weber I, Ullrich A.

International Journal of Cancer 2005 Feb; 113(5):689.

Application: IF, IP-WB, Human, SF767, HEK 293 cells

**Pathway**

- [Calcium signaling pathway](#)
- [Endocytosis](#)
- [ErbB signaling pathway](#)

**Disease**

- [Addison Disease](#)
- [Arthritis](#)
- [Autoimmune Diseases](#)
- [Bipolar Disorder](#)
- [Brain Neoplasms](#)

- [Carcinoma](#)
- [Cardiovascular Diseases](#)
- [Celiac Disease](#)
- [Coronary Artery Disease](#)
- [Crohn Disease](#)
- [Diabetes Mellitus](#)
- [Edema](#)
- [Genetic Predisposition to Disease](#)
- [Glioma](#)
- [Hypertension](#)
- [Multiple Sclerosis](#)
- [Ovarian Neoplasms](#)
- [Prostatic Neoplasms](#)
- [Schizophrenia](#)
- [Thyroid Diseases](#)