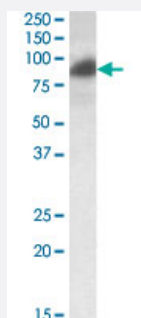


RAB11FIP1 polyclonal antibody

Catalog # PAB6853

Size 100 ug

Applications



Western Blot (Cell lysate)

RAB11FIP1 polyclonal antibody (Cat # PAB6853) (0.2 ug/mL) staining of HeLa lysate (35 ug protein in RIPA buffer). Primary incubation was 1 hour. Detected by chemiluminescence.

Specification

Product Description	Goat polyclonal antibody raised against synthetic peptide of RAB11FIP1.
Immunogen	A synthetic peptide corresponding to human RAB11FIP1.
Sequence	C-EATKEAKESKKPE
Host	Goat
Theoretical MW (kDa)	71.0, 137
Reactivity	Human
Specificity	This antibody is expected to recognize isoform 1 (NP_079427.3) and isoform 3 (NP_001002814.1).
Form	Liquid
Purification	Antigen affinity purification
Concentration	0.5 mg/mL
Quality Control Testing	Antibody Reactive Against Synthetic Peptide.

Recommend Usage	ELISA (1:16000) The optimal working dilution should be determined by the end user.
Storage Buffer	In Tris saline, pH 7.3 (0.5% BSA, 0.02% sodium azide)
Storage Instruction	Store at -20°C. Aliquot to avoid repeated freezing and thawing.
Note	This product contains sodium azide: a POISONOUS AND HAZARDOUS SUBSTANCE which should be handled by trained staff only.

Applications

- Western Blot (Cell lysate)

RAB11FIP1 polyclonal antibody (Cat # PAB6853) (0.2 ug/mL) staining of HeLa lysate (35 ug protein in RIPA buffer). Primary incubation was 1 hour. Detected by chemiluminescence.

- Enzyme-linked Immunoabsorbent Assay

Gene Info — RAB11FIP1

Entrez GeneID	80223
Protein Accession#	NP_079427.3;NP_001002814.1
Gene Name	RAB11FIP1
Gene Alias	DKFZp686E2214, FLJ22524, FLJ22622, MGC78448, NOEL1A, RCP, rab11-FIP1
Gene Description	RAB11 family interacting protein 1 (class I)
Omim ID	608737
Gene Ontology	Hyperlink
Gene Summary	Proteins of the large Rab GTPase family (see RAB1A; MIM 179508) have regulatory roles in the formation, targeting, and fusion of intracellular transport vesicles. RAB11FIP1 is one of many proteins that interact with and regulate Rab GTPases (Hales et al., 2001 [PubMed 11495908]).[supplied by OMIM]
Other Designations	RAB11 coupling protein RAB11 family interacting protein 1 Rab effector protein Rab-interacting recycling protein

Publication Reference

- [A 1 Mb minimal amplicon at 8p11-12 in breast cancer identifies new candidate oncogenes.](#)

Garcia MJ, Pole JC, Chin SF, Teschendorff A, Naderi A, Ozdag H, Vias M, Kranjac T, Subkhankulova T, Paish C, Ellis I, Brenton JD, Edwards PA, Caldas C.

Oncogene 2005 Aug; 24(33):5235.

Pathway

- [Endocytosis](#)