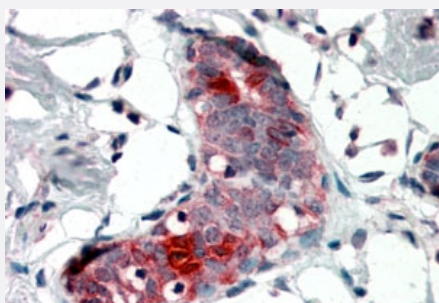


SCGB2A2 polyclonal antibody

Catalog # PAB6813 Size 100 ug

Applications



Immunohistochemistry (Formalin/PFA-fixed paraffin-embedded sections)

SCGB2A2 polyclonal antibody (Cat # PAB6813) (4 ug/mL) staining of paraffin embedded human breast. Steamed antigen retrieval with citrate buffer pH 6, AP-staining.

Specification

Product Description Goat polyclonal antibody raised against synthetic peptide of SCGB2A2.

Immunogen A synthetic peptide corresponding to human SCGB2A2.

Sequence C-NPQVSKTEYKEL

Host Goat

Theoretical MW (kDa) 10.5

Reactivity Human

Form Liquid

Purification Antigen affinity purification

Concentration 0.5 mg/mL

Quality Control Testing Antibody Reactive Against Synthetic Peptide.

Recommend Usage ELISA (1:32000)
Immunohistochemistry (Formalin/PFA-fixed paraffin-embedded sections) (4-6 ug/mL)
The optimal working dilution should be determined by the end user.

Storage Buffer	In Tris saline, pH 7.3 (0.5% BSA, 0.02% sodium azide)
Storage Instruction	Store at -20°C. Aliquot to avoid repeated freezing and thawing.
Note	This product contains sodium azide: a POISONOUS AND HAZARDOUS SUBSTANCE which should be handled by trained staff only.

Applications

- Immunohistochemistry (Formalin/PFA-fixed paraffin-embedded sections)

SCGB2A2 polyclonal antibody (Cat # PAB6813) (4 ug/mL) staining of paraffin embedded human breast. Steamed antigen retrieval with citrate buffer pH 6, AP-staining.

- Enzyme-linked Immunoabsorbent Assay

Gene Info — SCGB2A2

Entrez GeneID	4250
Protein Accession#	NP_002402.1
Gene Name	SCGB2A2
Gene Alias	MGB1, MGC71974, UGB2
Gene Description	secreteglobin, family 2A, member 2
Omim ID	605562
Gene Ontology	Hyperlink
Gene Summary	family 2A
Other Designations	mammaglobin 1 mammaglobin A

Publication Reference

- [RT-PCR for mammaglobin genes, MGB1 and MGB2, identifies breast cancer micrometastases in sentinel lymph nodes.](#)

Ouellette RJ, Richard D, Maicas E.

The American Journal of Pathology 2004 May; 121(5):637.