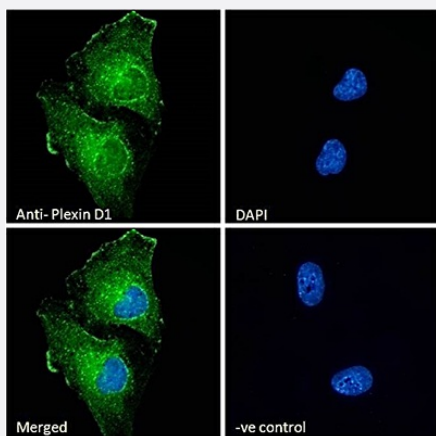


PLXND1 polyclonal antibody

Catalog # PAB6748

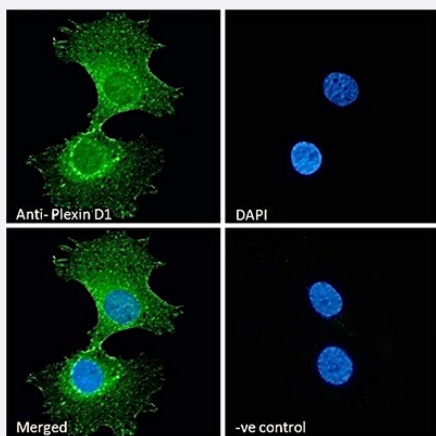
Size 100 ug

Applications



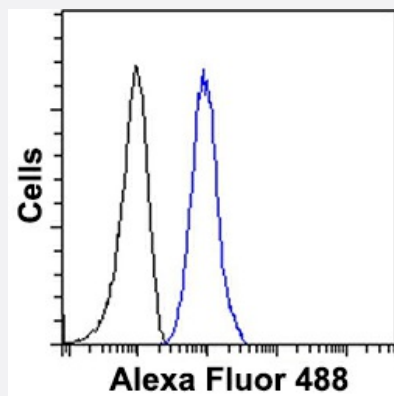
Immunofluorescence

PLXND1 polyclonal antibody (Cat # PAB6748) Immunofluorescence analysis of paraformaldehyde fixed U251 cells, permeabilized with 0.15% Triton. Primary incubation 1hr (10 ug/mL) followed by Alexa Fluor 488 secondary antibody (2 ug/mL), showing membrane and cytoplasmic staining. The nuclear stain is DAPI (blue). Negative control: Unimmunized goat IgG (10 ug/mL) followed by Alexa Fluor 488 secondary antibody (2 ug/mL).



Immunofluorescence

PLXND1 polyclonal antibody (Cat # PAB6748) Immunofluorescence analysis of paraformaldehyde fixed HeLa cells, permeabilized with 0.15% Triton. Primary incubation 1hr (10 ug/mL) followed by Alexa Fluor 488 secondary antibody (2 ug/mL), showing membrane and cytoplasmic staining. The nuclear stain is DAPI (blue). Negative control: Unimmunized goat IgG (10 ug/mL) followed by Alexa Fluor 488 secondary antibody (2 ug/mL).



Flow Cytometry

PLXND1 polyclonal antibody (Cat # PAB6748) Flow cytometric analysis of paraformaldehyde fixed K562 cells (blue line), permeabilized with 0.5% Triton. Primary incubation 1hr (10 ug/mL) followed by Alexa Fluor 488 secondary antibody (1 ug/mL). IgG control: Unimmunized goat IgG (black line) followed by Alexa Fluor 488 secondary antibody.

Specification

Product Description	Goat polyclonal antibody raised against synthetic peptide of PLXND1.
Immunogen	A synthetic peptide corresponding to human PLXND1.
Sequence	C-LAEPKKSHRQSH
Host	Goat
Theoretical MW (kDa)	212
Form	Liquid
Purification	Antigen affinity purification
Concentration	0.5 mg/mL
Quality Control Testing	Antibody Reactive Against Synthetic Peptide.
Recommend Usage	ELISA (1:16000) Flow Cytometry (10 ug/mL) Immunofluorescence (10 ug/mL) The optimal working dilution should be determined by the end user.
Storage Buffer	In Tris saline, pH 7.3 (0.5% BSA, 0.02% sodium azide)
Storage Instruction	Store at -20°C. Aliquot to avoid repeated freezing and thawing.
Note	This product contains sodium azide: a POISONOUS AND HAZARDOUS SUBSTANCE which should be handled by trained staff only.

Applications

- Immunofluorescence

PLXND1 polyclonal antibody (Cat # PAB6748) Immunofluorescence analysis of paraformaldehyde fixed U251 cells, permeabilized with 0.15% Triton. Primary incubation 1hr (10 ug/mL) followed by Alexa Fluor 488 secondary antibody (2 ug/mL), showing membrane and cytoplasmic staining. The nuclear stain is DAPI (blue). Negative control: Unimmunized goat IgG (10 ug/mL) followed by Alexa Fluor 488 secondary antibody (2 ug/mL).

- Immunofluorescence

PLXND1 polyclonal antibody (Cat # PAB6748) Immunofluorescence analysis of paraformaldehyde fixed HeLa cells, permeabilized with 0.15% Triton. Primary incubation 1hr (10 ug/mL) followed by Alexa Fluor 488 secondary antibody (2 ug/mL), showing membrane and cytoplasmic staining. The nuclear stain is DAPI (blue). Negative control: Unimmunized goat IgG (10 ug/mL) followed by Alexa Fluor 488 secondary antibody (2 ug/mL).

- Enzyme-linked Immunoabsorbent Assay
- Flow Cytometry

PLXND1 polyclonal antibody (Cat # PAB6748) Flow cytometric analysis of paraformaldehyde fixed K562 cells (blue line), permeabilized with 0.5% Triton. Primary incubation 1hr (10 ug/mL) followed by Alexa Fluor 488 secondary antibody (1 ug/mL). IgG control: Unimmunized goat IgG (black line) followed by Alexa Fluor 488 secondary antibody.

Gene Info — PLXND1

Entrez GeneID [23129](#)

Protein Accession# [NP_055918](#)

Gene Name PLXND1

Gene Alias KIAA0620, MGC75353, PLEXD1

Gene Description plexin D1

Omim ID [604282](#)

Gene Ontology [Hyperlink](#)

Other Designations -

Publication Reference

- [Semaphorin 3E and plexin-D1 control vascular pattern independently of neuropilins.](#)

Gu C, Yoshida Y, Livet J, Reimert DV, Mann F, Merte J, Henderson CE, Jessell TM, Kolodkin AL, Ginty DD.
Science 2005 Jan; 307(5707):265.