

## TPI1 polyclonal antibody

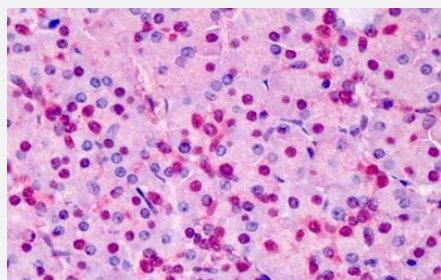
Catalog # PAB6740

Size 100 ug

### Applications

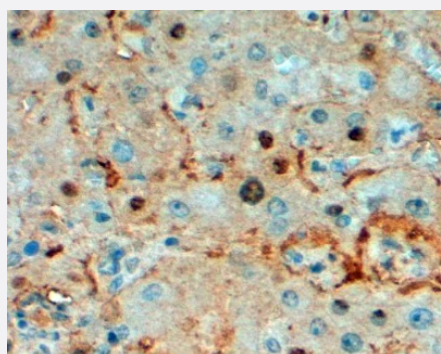
#### Western Blot (Cell lysate)

TPI1 polyclonal antibody (Cat # PAB6740) staining (0.001 $\mu$ g/ml) HepG2 (1), HEK293 (2), HeLa (3) and Jurkat (4) cell lysate (35 ug protein in RIPA buffer). Detected by chemiluminescence.



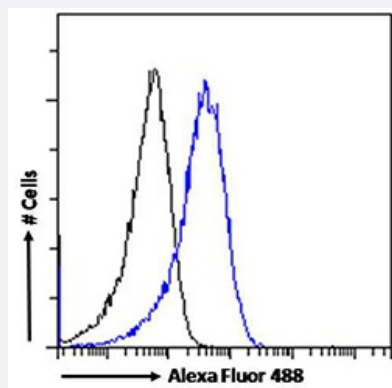
#### Immunohistochemistry (Formalin/PFA-fixed paraffin-embedded sections)

TPI1 polyclonal antibody (Cat # PAB6740) (5 ug/mL) staining of paraffin embedded Human Pancreas. Steamed antigen retrieval with Tris/EDTA buffer pH 9, AP-staining.



#### Immunohistochemistry (Formalin/PFA-fixed paraffin-embedded sections)

TPI1 polyclonal antibody (Cat # PAB6740) (2 ug/mL) staining of paraffin embedded Human Liver. Steamed antigen retrieval with Tris/EDTA buffer pH 9, HRP-staining.



## Flow Cytometry

TPI1 polyclonal antibody (Cat # PAB6740) Flow cytometric analysis of paraformaldehyde fixed HeLa cells (blue line), permeabilized with 0.5% Triton. Primary incubation 1hr (10 ug/ml) followed by Alexa Fluor 488 secondary antibody (1 ug/ml). IgG control: Unimmunized goat IgG (black line) followed by Alexa Fluor 488 secondary antibody.

## Specification

Product Description	Goat polyclonal antibody raised against synthetic peptide of TPI1.
Immunogen	A synthetic peptide corresponding to C-terminus of human TPI1.
Sequence	C-LKPEFVDIINAKQ
Host	Goat
Theoretical MW (kDa)	26.7
Reactivity	Dog, Human, Mouse, Rat
Form	Liquid
Purification	Antigen affinity purification
Concentration	0.5 mg/mL
Recommend Usage	ELISA (1:16000) Immunohistochemistry (2-5 ug/mL) Flow Cytometry (10 ug/mL) Western Blot (0.001-0.01 ug/mL) The optimal working dilution should be determined by the end user.
Storage Buffer	In Tris saline, pH 7.3 (0.5% BSA, 0.02% sodium azide)
Storage Instruction	Store at -20°C. Aliquot to avoid repeated freezing and thawing.
Note	This product contains sodium azide: a POISONOUS AND HAZARDOUS SUBSTANCE which should be handled by trained staff only.

## Applications

- Western Blot (Cell lysate)

TP11 polyclonal antibody (Cat # PAB6740) staining (0.001µg/ml) HepG2 (1), HEK293 (2), HeLa (3) and Jurkat (4) cell lysate (35 ug protein in RIPA buffer). Detected by chemiluminescence.

- Immunohistochemistry (Formalin/PFA-fixed paraffin-embedded sections)

TP11 polyclonal antibody (Cat # PAB6740) (5 ug/mL) staining of paraffin embedded Human Pancreas. Steamed antigen retrieval with Tris/EDTA buffer pH 9, AP-staining.

- Immunohistochemistry (Formalin/PFA-fixed paraffin-embedded sections)

TP11 polyclonal antibody (Cat # PAB6740) (2 ug/mL) staining of paraffin embedded Human Liver. Steamed antigen retrieval with Tris/EDTA buffer pH 9, HRP-staining.

- Enzyme-linked Immunoabsorbent Assay

- Flow Cytometry

TP11 polyclonal antibody (Cat # PAB6740) Flow cytometric analysis of paraformaldehyde fixed HeLa cells (blue line), permeabilized with 0.5% Triton. Primary incubation 1hr (10 ug/ml) followed by Alexa Fluor 488 secondary antibody (1 ug/ml). IgG control: Unimmunized goat IgG (black line) followed by Alexa Fluor 488 secondary antibody.

## Gene Info — TPI1

Entrez GeneID [7167](#)

Protein Accession# [NP\\_000356.1;NP\\_001152759.1](#)

Gene Name TPI1

Gene Alias MGC88108, TPI

Gene Description triosephosphate isomerase 1

Omim ID [190450](#)

Gene Ontology [Hyperlink](#)

**Gene Summary** This gene encodes an enzyme, consisting of two identical proteins, which catalyzes the isomerization of glyceraldehydes 3-phosphate (G3P) and dihydroxy-acetone phosphate (DHAP) in glycolysis and gluconeogenesis. Mutations in this gene are associated with triosephosphate isomerase deficiency. Pseudogenes have been identified on chromosomes 1, 4, 6 and 7. Alternative splicing results in multiple transcript variants. [provided by RefSeq]

Other Designations

-

## Publication Reference

- [Identification of differentially expressed proteins in spontaneous thymic lymphomas from knockout mice with deletion of p53.](#)

Honore B, Buus S, Claesson MH.

Proteome Science 2008 Jun; 6:18.

Application: WB, Mouse, Mouse thymocytes, SM5, SM7 tumour cell line

- [Identification of differentially regulated proteins in a patient with Leber's Congenital Amaurosis--a proteomic study.](#)

Vorum H, Ostergaard M, Rice GE, Honore B, Bek T.

Proteome Science 2007 Feb; 5:5.

Application: WB-Ti, Human, Ocular tissue from a patient with Leber's Congenital Amaurosis

## Pathway

- [Carbon fixation in photosynthetic organisms](#)
- [Fructose and mannose metabolism](#)
- [Glycolysis / Gluconeogenesis](#)
- [Inositol phosphate metabolism](#)
- [Metabolic pathways](#)

## Disease

- [Malaria](#)