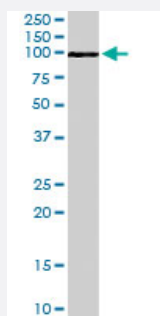


# ADAM12 polyclonal antibody

Catalog # PAB6697

Size 100 ug

## Applications



### Western Blot (Tissue lysate)

ADAM12 polyclonal antibody (Cat # PAB6697) staining (0.1 ug/mL) of human heart lysate (RIPA buffer, 30 ug total protein per lane). Primary incubated for 1 hour. Detected by western blot using chemiluminescence.

## Specification

<b>Product Description</b>	Goat polyclonal antibody raised against synthetic peptide of ADAM12.
<b>Immunogen</b>	A synthetic peptide corresponding to human ADAM12.
<b>Sequence</b>	AARPLPVSPARALC
<b>Host</b>	Goat
<b>Theoretical MW (kDa)</b>	99.6, 80.5
<b>Reactivity</b>	Human
<b>Specificity</b>	This antibody is expected to recognize both the longer membrane-bound form of human ADAM12 (NP_003465) and the shorter soluble ADAM12 splice isoform (NP_067673). This antibody does not cross-react with other ADAMS.
<b>Form</b>	Liquid
<b>Purification</b>	Antigen affinity purification
<b>Concentration</b>	0.5 mg/mL
<b>Quality Control Testing</b>	Antibody Reactive Against Synthetic Peptide.

Recommend Usage	ELISA (1:64000) Western blot (0.1-0.3 ug/mL) Immunohistochemistry (Formalin/PFA-fixed paraffin-embedded sections) (3-5 ug/mL) The optimal working dilution should be determined by the end user.
Storage Buffer	In Tris saline, pH 7.3 (0.5% BSA, 0.02% sodium azide)
Storage Instruction	Store at -20°C. Aliquot to avoid repeated freezing and thawing.
Note	This product contains sodium azide: a POISONOUS AND HAZARDOUS SUBSTANCE which should be handled by trained staff only.

## Applications

- Western Blot (Tissue lysate)

ADAM12 polyclonal antibody (Cat # PAB6697) staining (0.1 ug/mL) of human heart lysate (RIPA buffer, 30 ug total protein per lane). Primary incubated for 1 hour. Detected by western blot using chemiluminescence.

- Immunohistochemistry

- Enzyme-linked Immunoabsorbent Assay

## Gene Info — ADAM12

Entrez GeneID	<a href="#">8038</a>
Protein Accession#	<a href="#">NP_003465;NP_067673</a>
Gene Name	ADAM12
Gene Alias	MCMP, MCMPMitna, MLTN, MLTNA
Gene Description	ADAM metallopeptidase domain 12
Omim ID	<a href="#">602714</a>
Gene Ontology	<a href="#">Hyperlink</a>
Gene Summary	This gene encodes a member of the ADAM (a disintegrin and metalloprotease) protein family. Members of this family are membrane-anchored proteins structurally related to snake venom disintegrins, and have been implicated in a variety of biological processes involving cell-cell and cell-matrix interactions, including fertilization, muscle development, and neurogenesis. This gene has two alternatively spliced transcripts: a shorter secreted form and a longer membrane-bound form. The shorter form is found to stimulate myogenesis. [provided by RefSeq]

**Other Designations**

OTTHUMP00000020727|OTTHUMP00000046766|a disintegrin and metalloproteinase domain 1  
2 (meltrin alpha)|meltrin alpha

**Publication Reference**

- [Binding of ADAM12, a marker of skeletal muscle regeneration, to the muscle-specific actin-binding protein, alpha -actinin-2, is required for myoblast fusion.](#)

Galliano MF, Huet C, Frygeliuss J, Polgren A, Wewer UM, Engvall E.

The Journal of Biological Chemistry 2000 May; 275(18):13933.

Application: IP, WB-Ce, WB-Tr, Mouse, C2C12, CHO Cells

**Disease**

- [Alzheimer disease](#)
- [Diabetes Mellitus](#)
- [Disease Progression](#)
- [Genetic Predisposition to Disease](#)
- [Osteoarthritis](#)
- [Overweight](#)
- [Tobacco Use Disorder](#)