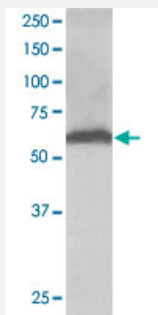


FTCD polyclonal antibody

Catalog # PAB6664

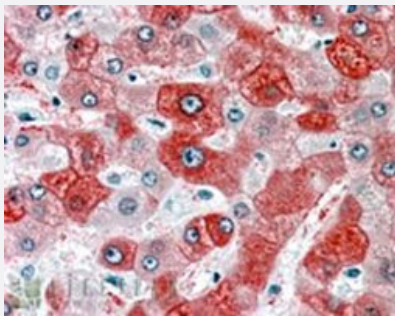
Size 100 ug

Applications



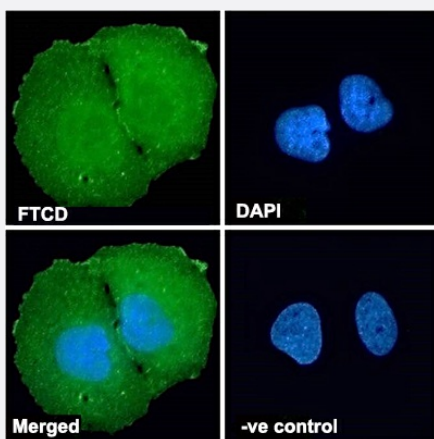
Western Blot (Tissue lysate)

FTCD polyclonal antibody (Cat # PAB6664) (0.03 ug/mL) staining of human liver lysate (35 ug protein in RIPA buffer). Primary incubation was 1 hour. Detected by chemiluminescence.



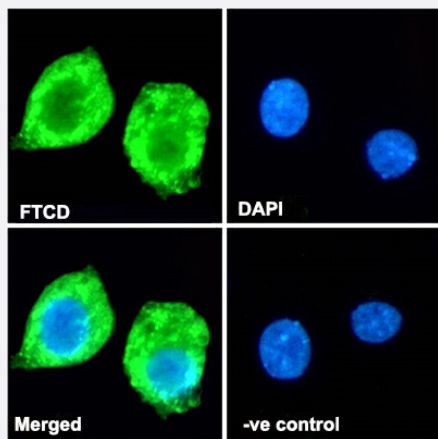
Immunohistochemistry (Formalin/PFA-fixed paraffin-embedded sections)

FTCD polyclonal antibody (Cat # PAB6664) (3.8 ug/mL) staining of paraffin embedded human liver. Steamed antigen retrieval with citrate buffer pH 6, AP-staining.



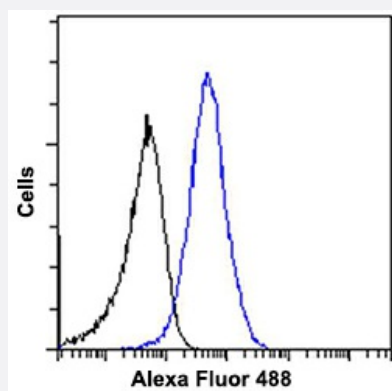
Immunofluorescence

FTCD polyclonal antibody (Cat # PAB6664) Immunofluorescence analysis of paraformaldehyde fixed U2OS cells, permeabilized with 0.15% Triton. Primary incubation 1hr (10 ug/mL) followed by Alexa Fluor 488 secondary antibody (2 ug/mL), showing cytoplasmic and plasma membrane staining. The nuclear stain is DAPI (blue). Negative control: Unimmunized goat IgG (10 ug/mL) followed by Alexa Fluor 488 secondary antibody (2 ug/mL).



Immunofluorescence

FTCD polyclonal antibody (Cat # PAB6664) Immunofluorescence analysis of paraformaldehyde fixed HepG2 cells, permeabilized with 0.15% Triton. Primary incubation 1hr (10 ug/mL) followed by Alexa Fluor 488 secondary antibody (2 ug/mL), showing cytoplasmic staining. The nuclear stain is DAPI (blue). Negative control: Unimmunized goat IgG (10 ug/mL) followed by Alexa Fluor 488 secondary antibody (2 ug/mL).



Flow Cytometry

FTCD polyclonal antibody (Cat # PAB6664) Flow cytometric analysis of paraformaldehyde fixed HepG2 cells (blue line), permeabilized with 0.5% Triton. Primary incubation 1hr (10 ug/mL) followed by Alexa Fluor 488 secondary antibody (1 ug/mL). IgG control: Unimmunized goat IgG (black line) followed by Alexa Fluor 488 secondary antibody.

Specification

Product Description	Goat polyclonal antibody raised against synthetic peptide of FTCD.
Immunogen	A synthetic peptide corresponding to human FTCD.
Sequence	SQLVECVPNFSEGKNQ
Host	Goat
Theoretical MW (kDa)	58.9
Reactivity	Human
Specificity	This antibody is expected to recognize both reported isoforms (as represented by NP_006648 and NP_996848).
Form	Liquid
Purification	Antigen affinity purification
Concentration	0.5 mg/mL

Quality Control Testing	Antibody Reactive Against Synthetic Peptide.
Recommend Usage	ELISA (1:64000) Flow Cytometry (10 ug/mL) Immunofluorescence (10 ug/mL) Western blot (0.05-0.1 ug/mL) The optimal working dilution should be determined by the end user.
Storage Buffer	In Tris saline, pH 7.3 (0.5% BSA, 0.02% sodium azide)
Storage Instruction	Store at -20°C. Aliquot to avoid repeated freezing and thawing.
Note	This product contains sodium azide: a POISONOUS AND HAZARDOUS SUBSTANCE which should be handled by trained staff only.

Applications

- Western Blot (Tissue lysate)

FTCD polyclonal antibody (Cat # PAB6664) (0.03 ug/mL) staining of human liver lysate (35 ug protein in RIPA buffer). Primary incubation was 1 hour. Detected by chemiluminescence.

- Immunohistochemistry (Formalin/PFA-fixed paraffin-embedded sections)

FTCD polyclonal antibody (Cat # PAB6664) (3.8 ug/mL) staining of paraffin embedded human liver. Steamed antigen retrieval with citrate buffer pH 6, AP-staining.

- Immunofluorescence

FTCD polyclonal antibody (Cat # PAB6664) Immunofluorescence analysis of paraformaldehyde fixed U2OS cells, permeabilized with 0.15% Triton. Primary incubation 1hr (10 ug/mL) followed by Alexa Fluor 488 secondary antibody (2 ug/mL), showing cytoplasmic and plasma membrane staining. The nuclear stain is DAPI (blue). Negative control: Unimmunized goat IgG (10 ug/mL) followed by Alexa Fluor 488 secondary antibody (2 ug/mL).

- Immunofluorescence

FTCD polyclonal antibody (Cat # PAB6664) Immunofluorescence analysis of paraformaldehyde fixed HepG2 cells, permeabilized with 0.15% Triton. Primary incubation 1hr (10 ug/mL) followed by Alexa Fluor 488 secondary antibody (2 ug/mL), showing cytoplasmic staining. The nuclear stain is DAPI (blue). Negative control: Unimmunized goat IgG (10 ug/mL) followed by Alexa Fluor 488 secondary antibody (2 ug/mL).

- Enzyme-linked Immunoabsorbent Assay

- Flow Cytometry

FTCD polyclonal antibody (Cat # PAB6664) Flow cytometric analysis of paraformaldehyde fixed HepG2 cells (blue line), permeabilized with 0.5% Triton. Primary incubation 1hr (10 ug/mL) followed by Alexa Fluor 488 secondary antibody (1 ug/mL). IgG control: Unimmunized goat IgG (black line) followed by Alexa Fluor 488 secondary antibody.

Gene Info — FTCD

Entrez GeneID	10841
Protein Accession#	NP_006648;NP_996848
Gene Name	FTCD
Gene Alias	LCHC1
Gene Description	formiminotransferase cyclodeaminase
Omim ID	229100 606806
Gene Ontology	Hyperlink
Gene Summary	FTCD is a bifunctional enzyme that channels 1-carbon units from formiminoglutamate, a metabolite of the histidine degradation pathway, to the folate pool.[supplied by OMIM]
Other Designations	OTTHUMP00000115563 formimidoyltransferase cyclodeaminase

Publication Reference

- [A novel 58-kDa protein associates with the Golgi apparatus and microtubules.](#)

Bloom GS, Brashear TA.

The Journal of Biological Chemistry 1989 Sep; 264(27):16083.

Pathway

- [Histidine metabolism](#)
- [Metabolic pathways](#)
- [One carbon pool by folate](#)

Disease

- [Alzheimer disease](#)
- [Cardiovascular Diseases](#)
- [Cerebral Amyloid Angiopathy](#)

- [Cleft Lip](#)
- [Cleft Palate](#)
- [Diabetes Mellitus](#)
- [Edema](#)
- [Genetic Predisposition to Disease](#)
- [Neuroblastoma](#)
- [Spinal Dysraphism](#)