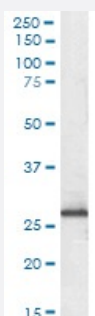


RANBP1 polyclonal antibody

Catalog # PAB6654

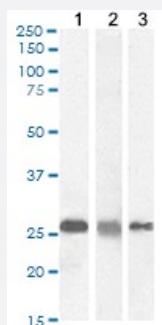
Size 100 ug

Applications



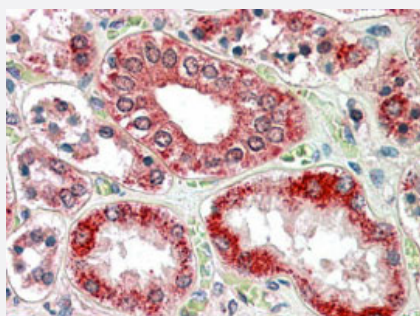
Western Blot (Tissue lysate)

RANBP1 polyclonal antibody (Cat # PAB6654) (0.3 ug/mL) staining of Human Duodenum lysate (35 ug protein in RIPA buffer). Detected by chemiluminescence.



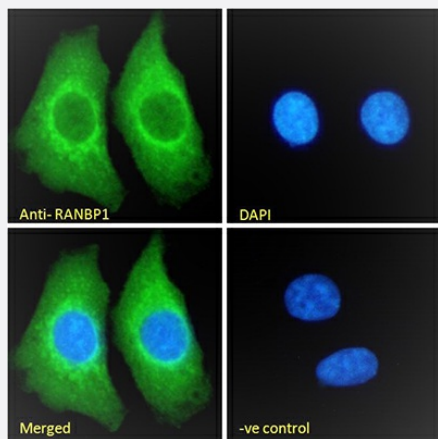
Western Blot (Cell lysate)

RANBP1 polyclonal antibody (Cat # PAB6654) (0.03 ug/mL) staining of A431 (1), (0.5 ug/mL) HeLa (2) and (0.1 ug/mL) MCF7 (3) cell lysate (35 ug protein in RIPA buffer). Detected by chemiluminescence.



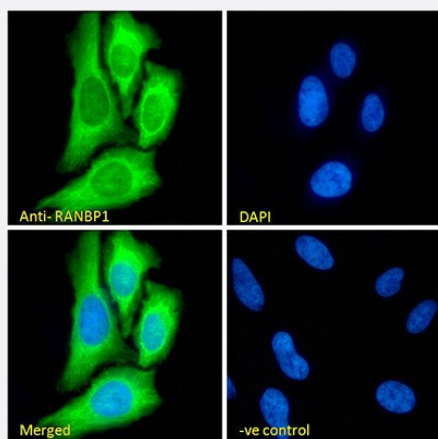
Immunohistochemistry (Formalin/PFA-fixed paraffin-embedded sections)

Immunohistochemical staining of human kidney with RANBP1 polyclonal antibody (Cat # PAB6654) (3.8 ug/mL). Steamed antigen retrieval with citrate buffer pH 6, AP-staining.



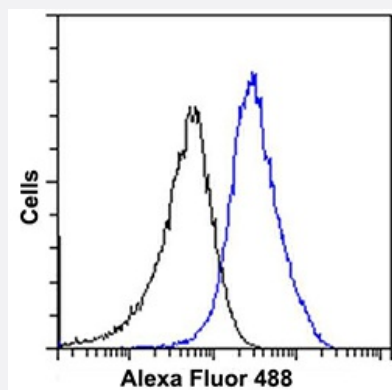
Immunofluorescence

RANBP1 polyclonal antibody (Cat # PAB6654) Immunofluorescence analysis of paraformaldehyde fixed HEK293 cells, permeabilized with 0.15% Triton. Primary incubation 1hr (10 ug/mL) followed by Alexa Fluor 488 secondary antibody (2 ug/mL), showing cytoplasmic staining. The nuclear stain is DAPI (blue). Negative control: Unimmunized goat IgG (10 ug/mL) followed by Alexa Fluor 488 secondary antibody (2 ug/mL).



Immunofluorescence

RANBP1 polyclonal antibody (Cat # PAB6654) Immunofluorescence analysis of paraformaldehyde fixed HeLa cells, permeabilized with 0.15% Triton. Primary incubation 1hr (10 ug/mL) followed by Alexa Fluor 488 secondary antibody (2 ug/mL), showing cytoplasmic staining. The nuclear stain is DAPI (blue). Negative control: Unimmunized goat IgG (10 ug/mL) followed by Alexa Fluor 488 secondary antibody (2 ug/mL).



Flow Cytometry

RANBP1 polyclonal antibody (Cat # PAB6654) Flow cytometric analysis of paraformaldehyde fixed HEK293 cells (blue line), permeabilized with 0.5% Triton. Primary incubation 1hr (10 ug/mL) followed by Alexa Fluor 488 secondary antibody (1 ug/mL). IgG control: Unimmunized goat IgG (black line) followed by Alexa Fluor 488 secondary antibody.

Specification

Product Description	Goat polyclonal antibody raised against synthetic peptide of RANBP1.
Immunogen	A synthetic peptide corresponding to human RANBP1.
Sequence	C-LSVKEETKEDAEKQ
Host	Goat
Theoretical MW (kDa)	23.3

Reactivity	Human
Form	Liquid
Purification	Antigen affinity purification
Concentration	0.5 mg/mL
Quality Control Testing	Antibody Reactive Against Synthetic Peptide.
Recommend Usage	ELISA (1:16000) Flow Cytometry (10 ug/mL) Immunofluorescence (10 ug/mL) Immunohistochemistry (3-5 ug/mL) Western Blot (0.03-0.5 ug/mL) The optimal working dilution should be determined by the end user.
Storage Buffer	In Tris saline, pH 7.3 (0.5% BSA, 0.02% sodium azide)
Storage Instruction	Store at -20°C. Aliquot to avoid repeated freezing and thawing.
Note	This product contains sodium azide: a POISONOUS AND HAZARDOUS SUBSTANCE which should be handled by trained staff only.

Applications

- Western Blot (Tissue lysate)

RANBP1 polyclonal antibody (Cat # PAB6654) (0.3 ug/mL) staining of Human Duodenum lysate (35 ug protein in RIPA buffer). Detected by chemiluminescence.

- Western Blot (Cell lysate)

RANBP1 polyclonal antibody (Cat # PAB6654) (0.03 ug/mL) staining of A431 (1), (0.5 ug/mL) HeLa (2) and (0.1 ug/mL) MCF7 (3) cell lysate (35 ug protein in RIPA buffer). Detected by chemiluminescence.

- Immunohistochemistry (Formalin/PFA-fixed paraffin-embedded sections)

Immunohistochemical staining of human kidney with RANBP1 polyclonal antibody (Cat # PAB6654) (3.8 ug/mL). Steamed antigen retrieval with citrate buffer pH 6, AP-staining.

- Immunofluorescence

RANBP1 polyclonal antibody (Cat # PAB6654) Immunofluorescence analysis of paraformaldehyde fixed HEK293 cells, permeabilized with 0.15% Triton. Primary incubation 1hr (10 ug/mL) followed by Alexa Fluor 488 secondary antibody (2 ug/mL), showing cytoplasmic staining. The nuclear stain is DAPI (blue). Negative control: Unimmunized goat IgG (10 ug/mL) followed by Alexa Fluor 488 secondary antibody (2 ug/mL).

- Immunofluorescence

RANBP1 polyclonal antibody (Cat # PAB6654) Immunofluorescence analysis of paraformaldehyde fixed HeLa cells, permeabilized with 0.15% Triton. Primary incubation 1hr (10 ug/mL) followed by Alexa Fluor 488 secondary antibody (2 ug/mL), showing cytoplasmic staining. The nuclear stain is DAPI (blue). Negative control: Unimmunized goat IgG (10 ug/mL) followed by Alexa Fluor 488 secondary antibody (2 ug/mL).

- Enzyme-linked Immunoabsorbent Assay

- Flow Cytometry

RANBP1 polyclonal antibody (Cat # PAB6654) Flow cytometric analysis of paraformaldehyde fixed HEK293 cells (blue line), permeabilized with 0.5% Triton. Primary incubation 1hr (10 ug/mL) followed by Alexa Fluor 488 secondary antibody (1 ug/mL). IgG control: Unimmunized goat IgG (black line) followed by Alexa Fluor 488 secondary antibody.

Gene Info — RANBP1

Entrez GeneID [5902](#)

Protein Accession# [NP_002873](#)

Gene Name RANBP1

Gene Alias HTF9A, MGC88701

Gene Description RAN binding protein 1

Omim ID [601180](#)

Gene Ontology [Hyperlink](#)

Gene Summary Ran/TC4-binding protein, RanBP1, interacts specifically with GTP-charged RAN. RANBP1 encodes a 23-kD protein that binds to RAN complexed with GTP but not GDP. RANBP1 does not activate GTPase activity of RAN but does markedly increase GTP hydrolysis by the RanGTPase-activating protein (RanGAP1). The RANBP1 cDNA encodes a 201-amino acid protein that is 92% similar to its mouse homolog. In both mammalian cells and in yeast, RANBP1 acts as a negative regulator of RCC1 by inhibiting RCC1-stimulated guanine nucleotide release from RAN. [provided by RefSeq]

Other Designations -

Publication Reference

- [Co-activation of RanGTPase and inhibition of GTP dissociation by Ran-GTP binding protein RanBP1.](#)

Bischoff FR, Krebber H, Smirnova E, Dong W, Ponstingl H.

The EMBO Journal 1995 Feb; 14(4):705.

Disease

- [Disease Progression](#)
- [Disease Susceptibility](#)
- [HIV Infections](#)