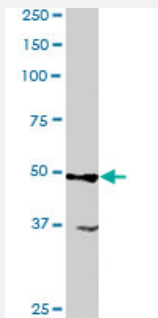


# ACTL6A/ACTL6B polyclonal antibody

Catalog # PAB6615

Size 100 ug

## Applications



### Western Blot (Cell lysate)

The ACTL6A/ACTL6B polyclonal antibody (Cat # PAB6615) staining (1 ug/mL) of HeLa lysate (RIPA buffer, 35 ug total protein per lane). Primary incubated for 1 hour. Detected by western blot using chemiluminescence.

## Specification

<b>Product Description</b>	Goat polyclonal antibody raised against synthetic peptide of ACTL6A/ACTL6B.
<b>Immunogen</b>	A synthetic peptide corresponding to human ACTL6A/ACTL6B.
<b>Sequence</b>	YEEGGKQCVERKCP
<b>Host</b>	Goat
<b>Theoretical MW (kDa)</b>	47.5, 43.2, 46.9
<b>Reactivity</b>	Human
<b>Specificity</b>	This antibody is expected to recognize both BAF53A and BAF53B, which are almost identical.
<b>Form</b>	Liquid
<b>Purification</b>	Antigen affinity purification
<b>Concentration</b>	0.5 mg/mL
<b>Quality Control Testing</b>	Antibody Reactive Against Synthetic Peptide.

<b>Recommend Usage</b>	ELISA (1:64000) Western Blot (1-3 ug/mL) The optimal working dilution should be determined by the end user.
<b>Storage Buffer</b>	In Tris saline, pH 7.3 (0.5% BSA, 0.02% sodium azide)
<b>Storage Instruction</b>	Store at -20°C. Aliquot to avoid repeated freezing and thawing.
<b>Note</b>	This product contains sodium azide: a POISONOUS AND HAZARDOUS SUBSTANCE which should be handled by trained staff only.

## Applications

- Western Blot (Cell lysate)

The ACTL6A/ACTL6B polyclonal antibody (Cat # PAB6615) staining (1 ug/mL) of HeLa lysate (RIPA buffer, 35 ug total protein per lane). Primary incubated for 1 hour. Detected by western blot using chemiluminescence.

- Enzyme-linked Immunoabsorbent Assay

## Gene Info — ACTL6A

<b>Entrez GeneID</b>	<a href="#">86</a>
<b>Protein Accession#</b>	<a href="#">NP_057272 (Gene ID : 51412);NP_004292 (Gene ID : 86)</a>
<b>Gene Name</b>	ACTL6A
<b>Gene Alias</b>	ACTL6, ARPN-BETA, Arp4, BAF53A, INO80K, MGC5382
<b>Gene Description</b>	actin-like 6A
<b>Omim ID</b>	<a href="#">604958</a>
<b>Gene Ontology</b>	<a href="#">Hyperlink</a>

<b>Gene Summary</b>	This gene encodes a family member of actin-related proteins (ARPs), which share significant amino acid sequence identity to conventional actins. Both actins and ARPs have an actin fold, which includes an ATP-binding cleft, as a common feature. The ARPs are involved in diverse cellular processes, including vesicular transport, spindle orientation, nuclear migration and chromatin remodeling. This gene encodes a 53 kDa subunit protein of the BAF (BRG1/brm-associated factor) complex in mammals, which is functionally related to SWI/SNF complex in <i>S. cerevisiae</i> and <i>Drosophila</i> ; the latter is thought to facilitate transcriptional activation of specific genes by antagonizing chromatin-mediated transcriptional repression. Together with beta-actin, it is required for maximal ATPase activity of BRG1, and for the association of the BAF complex with chromatin/matrix. Three transcript variants that encode two different protein isoforms have been described. [provided by RefSeq]
---------------------	---

#### Other Designations

BAF complex 53 kDa subunit|BAF53|BRG1-associated factor|INO80 complex subunit K|actin-related protein 4|hArpN beta

## Gene Info — ACTL6B

#### Entrez GeneID

[51412](#)

#### Protein Accession#

[NP\\_057272 \(Gene ID : 51412\);NP\\_004292 \(Gene ID : 86\)](#)

#### Gene Name

ACTL6B

#### Gene Alias

ACTL6, BAF53B

#### Gene Description

actin-like 6B

#### Gene Ontology

[Hyperlink](#)

#### Gene Summary

The protein encoded by this gene is a member of a family of actin-related proteins (ARPs) which share significant amino acid sequence identity to conventional actins. Both actins and ARPs have an actin fold, which is an ATP-binding cleft, as a common feature. The ARPs are involved in diverse cellular processes, including vesicular transport, spindle orientation, nuclear migration and chromatin remodeling. This gene encodes a subunit of the BAF (BRG1/brm-associated factor) complex in mammals, which is functionally related to SWI/SNF complex in *S. cerevisiae* and *Drosophila*; the latter is thought to facilitate transcriptional activation of specific genes by antagonizing chromatin-mediated transcriptional repression. This subunit may be involved in the regulation of genes by structural modulation of their chromatin, specifically in the brain. [provided by RefSeq]

#### Other Designations

53 kDa BRG1-associated factor B|actin-like 6|actin-related protein|hArpN alpha

## Publication Reference

- [Two isoforms of a human actin-related protein show nuclear localization and mutually selective expression between brain and other tissues.](#)

Harata M, Mochizuki R, Mizuno S.

Bioscience, Biotechnology, and Biochemistry 1999 May; 63(5):917.

## Disease

- [Cardiovascular Diseases](#)
- [Diabetes Mellitus](#)
- [Edema](#)