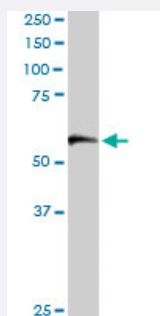


TCP1 polyclonal antibody

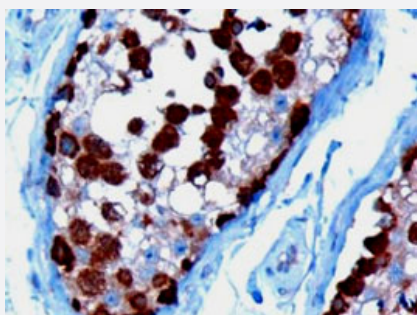
Catalog # PAB6585 Size 100 ug

Applications



Western Blot (Tissue lysate)

TCP1 polyclonal antibody (Cat # PAB6585) staining (1 ug/mL) of human lung lysate (RIPA buffer, 35 ug total protein per lane). Primary incubated for 1 hour. Detected by western blot using chemiluminescence.



Immunohistochemistry (Formalin/PFA-fixed paraffin-embedded sections)

TCP1 polyclonal antibody (Cat # PAB6585) (10 ug/mL) staining of paraffin embedded human testis. Microwaved antigen retrieval with Tris/EDTA buffer pH9, HRP-staining.

Specification

Product Description	Goat polyclonal antibody raised against synthetic peptide of TCP1.
Immunogen	A synthetic peptide corresponding to human TCP1.
Sequence	C-SYEDAVHSGALND
Host	Goat
Theoretical MW (kDa)	60.3, 43.9
Reactivity	Human
Form	Liquid

Purification	Antigen affinity purification
Concentration	0.5 mg/mL
Quality Control Testing	Antibody Reactive Against Synthetic Peptide.
Recommend Usage	ELISA (1:32000) Western Blot (0.5-2 ug/mL) Immunohistochemistry (1-2 ug/mL) The optimal working dilution should be determined by the end user.
Storage Buffer	In Tris saline, pH 7.3 (0.5% BSA, 0.02% sodium azide)
Storage Instruction	Store at -20°C. Aliquot to avoid repeated freezing and thawing.
Note	This product contains sodium azide: a POISONOUS AND HAZARDOUS SUBSTANCE which should be handled by trained staff only.

Applications

- Western Blot (Tissue lysate)

TCP1 polyclonal antibody (Cat # PAB6585) staining (1 ug/mL) of human lung lysate (RIPA buffer, 35 ug total protein per lane). Primary incubated for 1 hour. Detected by western blot using chemiluminescence.

- Immunohistochemistry (Formalin/PFA-fixed paraffin-embedded sections)

TCP1 polyclonal antibody (Cat # PAB6585) (10 ug/mL) staining of paraffin embedded human testis. Microwaved antigen retrieval with Tris/EDTA buffer pH9, HRP-staining.

- Enzyme-linked Immunoabsorbent Assay

Gene Info — TCP1

Entrez GeneID	6950
Protein Accession#	NP_110379.2
Gene Name	TCP1
Gene Alias	CCT-alpha, CCT1, CCTa, D6S230E, TCP-1-alpha
Gene Description	t-complex 1
Omim ID	186980

Gene Ontology

[Hyperlink](#)

Gene Summary

This gene encodes a molecular chaperone that is member of the chaperonin containing TCP1 complex (CCT), also known as the TCP1 ring complex (TRiC). This complex consists of two identical stacked rings, each containing eight different proteins. Unfolded polypeptides enter the central cavity of the complex and are folded in an ATP-dependent manner. The complex folds various proteins, including actin and tubulin. Alternate transcriptional splice variants of this gene, encoding different isoforms, have been characterized. [provided by RefSeq]

Other Designations

OTTHUMP00000017529|T-complex protein 1|T-complex protein 1, alpha subunit|tailless complex polypeptide 1

Publication Reference

- [TCP1 complex is a molecular chaperone in tubulin biogenesis.](#)

Yaffe MB, Farr GW, Miklos D, Horwich AL, Sternlicht ML, Sternlicht H.

Nature 1992 Jul; 358(6383):245.

Application: AFC, WB-Re, WB-Ti, Mouse, Mouse testes, Purified proteins

Disease

- [Cardiovascular Diseases](#)
- [Diabetes Mellitus](#)
- [Edema](#)
- [Genetic Predisposition to Disease](#)
- [Mucocutaneous Lymph Node Syndrome](#)
- [Schizophrenia](#)