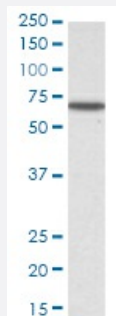


KPNA3 polyclonal antibody

Catalog # PAB6560

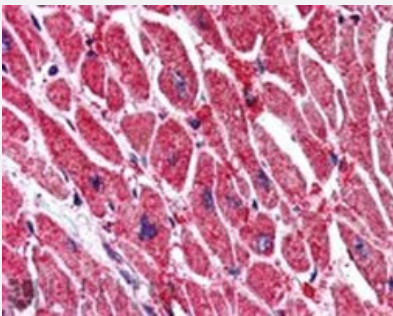
Size 100 ug

Applications



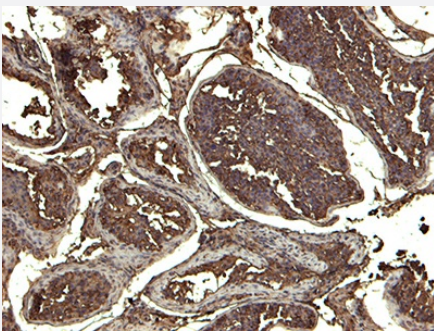
Western Blot (Cell lysate)

KPNA3 polyclonal antibody (Cat # PAB6560) (0.1 ug/mL) staining of HeLa lysate (35 ug protein in RIPA buffer). Detected by chemiluminescence.



Immunohistochemistry (Formalin/PFA-fixed paraffin-embedded sections)

KPNA3 polyclonal antibody (Cat # PAB6560, 5 ug/mL) staining of paraffin embedded human heart. Steamed antigen retrieval with citrate buffer pH 6, AP-staining.



Immunohistochemistry (Formalin/PFA-fixed paraffin-embedded sections)

KPNA3 polyclonal antibody (Cat # PAB6560) (0.1 ug/mL) staining of HeLa lysate (35 ug protein in RIPA buffer). Detected by chemiluminescence.

Specification

Product Description

Goat polyclonal antibody raised against synthetic peptide of KPNA3.

Immunogen

A synthetic peptide corresponding to C-terminus of human KPNA3.

Sequence	C-DPTANLQTKEFNF
Host	Goat
Theoretical MW (kDa)	57.8
Reactivity	Human, Mouse, Rat
Form	Liquid
Purification	Antigen affinity purification
Concentration	0.5 mg/mL
Recommend Usage	ELISA (1:32000) Western blot (0.1-0.3 ug/mL) Immunohistochemistry (Formalin/PFA-fixed paraffin-embedded sections) (6 ug/mL) The optimal working dilution should be determined by the end user.
Storage Buffer	In Tris saline, pH 7.3 (0.5% BSA, 0.02% sodium azide)
Storage Instruction	Store at -20°C. Aliquot to avoid repeated freezing and thawing.
Note	This product contains sodium azide: a POISONOUS AND HAZARDOUS SUBSTANCE which should be handled by trained staff only.

Applications

- Western Blot (Cell lysate)

KPNA3 polyclonal antibody (Cat # PAB6560) (0.1 ug/mL) staining of HeLa lysate (35 ug protein in RIPA buffer). Detected by chemiluminescence.

- Immunohistochemistry (Formalin/PFA-fixed paraffin-embedded sections)

KPNA3 polyclonal antibody (Cat # PAB6560, 5 ug/mL) staining of paraffin embedded human heart. Steamed antigen retrieval with citrate buffer pH 6, AP-staining.

- Immunohistochemistry (Formalin/PFA-fixed paraffin-embedded sections)

KPNA3 polyclonal antibody (Cat # PAB6560) (0.1 ug/mL) staining of HeLa lysate (35 ug protein in RIPA buffer). Detected by chemiluminescence.

- Immunocytochemistry

- Immunofluorescence

- Immunoprecipitation
- Enzyme-linked Immunoabsorbent Assay

Gene Info — KPNA3

Entrez GeneID [3839](#)

Protein Accession# [NP_002258.2](#)

Gene Name KPNA3

Gene Alias IPOA4, SRP1, SRP1gamma, SRP4, hSRP1

Gene Description karyopherin alpha 3 (importin alpha 4)

Omim ID [601892](#)

Gene Ontology [Hyperlink](#)

Gene Summary The transport of molecules between the nucleus and the cytoplasm in eukaryotic cells is mediated by the nuclear pore complex (NPC), which consists of 60-100 proteins. Small molecules (up to 70 kD) can pass through the nuclear pore by nonselective diffusion while larger molecules are transported by an active process. The protein encoded by this gene belongs to the importin alpha family , and is involved in nuclear protein import. [provided by RefSeq

Other Designations OTTHUMP00000018426|importin alpha 4|importin alpha-3|importin-alpha-Q2|karyopherin alpha 3

Publication Reference

- [Cloning of two novel human importin-alpha subunits and analysis of the expression pattern of the importin-alpha protein family.](#)

Kohler M, Ansieau S, Prehn S, Leutz A, Haller H, Hartmann E.

FEBS Letters 1997 Nov; 417(1):104.

Application: WB-Ce, WB-Ti, Human, C2C12, COS-7, ECV 304, HEK 293, HeLa, HepG2, HUVEC, Jurkat, MEL, MRC5, MT1, Raji, T23/96, U-937 cells, Brains, Hearts, Lungs, Kidneys, Ovaries, Spleens, Testes

Disease

- [Genetic Predisposition to Disease](#)

- [Schizophrenia](#)