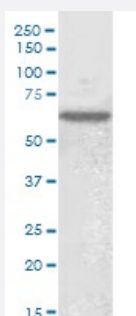


NUP62 polyclonal antibody

Catalog # PAB6546

Size 100 ug

Applications



Western Blot (Cell lysate)

NUP62 polyclonal antibody (Cat # PAB6546) (1 ug/mL) staining of nuclear lysates of cell line HeLa lysate (35 ug protein in RIPA buffer). Detected by chemiluminescence.

Specification

Product Description Goat polyclonal antibody raised against synthetic peptide of NUP62.

Immunogen A synthetic peptide corresponding to human NUP62.

Sequence C-RKEQERSFRITFD

Host Goat

Theoretical MW (kDa) 53.3

Specificity All four variants represent identical protein.

Form Liquid

Purification Antigen affinity purification

Concentration 0.5 mg/mL

Quality Control Testing Antibody Reactive Against Synthetic Peptide.

Recommend Usage
ELISA (1:8000)
Western Blot (1-3 ug/mL)
The optimal working dilution should be determined by the end user.

Storage Buffer	In Tris saline, pH 7.3 (0.5% BSA, 0.02% sodium azide)
Storage Instruction	Store at -20°C. Aliquot to avoid repeated freezing and thawing.
Note	This product contains sodium azide: a POISONOUS AND HAZARDOUS SUBSTANCE which should be handled by trained staff only.

Applications

- Western Blot (Cell lysate)

NUP62 polyclonal antibody (Cat # PAB6546) (1 ug/mL) staining of nuclear lysates of cell line HeLa lysate (35 ug protein in RIPA buffer). Detected by chemiluminescence.

- Enzyme-linked Immunoabsorbent Assay

Gene Info — NUP62

Entrez GeneID	23636
Protein Accession#	NP_036478.2 ; NP_057637.2 ; NP_714940.1 ; NP_714941.1
Gene Name	NUP62
Gene Alias	DKFZp547L134, FLJ20822, FLJ43869, IBSN, MGC841, SNDI, p62
Gene Description	nucleoporin 62kDa
Omim ID	271930 605815
Gene Ontology	Hyperlink
Gene Summary	The nuclear pore complex is a massive structure that extends across the nuclear envelope, forming a gateway that regulates the flow of macromolecules between the nucleus and the cytoplasm. Nucleoporins are the main components of the nuclear pore complex in eukaryotic cells. The protein encoded by this gene is a member of the FG-repeat containing nucleoporins and is localized to the nuclear pore central plug. This protein associates with the importin alpha/beta complex which is involved in the import of proteins containing nuclear localization signals. Multiple transcript variants of this gene encode a single protein isoform. [provided by RefSeq]
Other Designations	nuclear pore glycoprotein p62

Publication Reference

- [Human nucleoporin p62 and the essential yeast nuclear pore protein NSP1 show sequence homology and a similar domain organization.](#)

Carmo-Fonseca M, Kern H, Hurt EC.

Eur J Cell Biol 1991 Jun; 55(1):17.