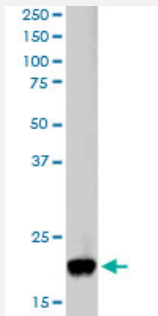


# PARK7 polyclonal antibody

Catalog # PAB6353

Size 100 ug

## Applications



### Western Blot (Cell lysate)

PARK7 polyclonal antibody (Cat # PAB6353) staining (1 ug/mL) of Jurkat lysate (RIPA buffer, 30 ug total protein per lane). Primary incubated for 1 hour. Detected by western blot using chemiluminescence.

## Specification

**Product Description** Goat polyclonal antibody raised against synthetic peptide of PARK7.

**Immunogen** A synthetic peptide corresponding to human PARK7.

**Sequence** C-AAQVKAPLVLKD

**Host** Goat

**Theoretical MW (kDa)** 19.9

**Reactivity** Human

**Form** Liquid

**Purification** Antigen affinity purification

**Concentration** 0.5 mg/mL

**Quality Control Testing** Antibody Reactive Against Synthetic Peptide.

**Recommend Usage**  
 ELISA (1:32000)  
 Western Blot (0.5-1 ug/mL)  
 The optimal working dilution should be determined by the end user.

Storage Buffer	In Tris saline, pH 7.3 (0.5% BSA, 0.02% sodium azide)
Storage Instruction	Store at -20°C. Aliquot to avoid repeated freezing and thawing.
Note	This product contains sodium azide: a POISONOUS AND HAZARDOUS SUBSTANCE which should be handled by trained staff only.

## Applications

- Western Blot (Cell lysate)

PARK7 polyclonal antibody (Cat # PAB6353) staining (1 ug/mL) of Jurkat lysate (RIPA buffer, 30 ug total protein per lane). Primary incubated for 1 hour. Detected by western blot using chemiluminescence.

- Enzyme-linked Immunoabsorbent Assay

## Gene Info — PARK7

Entrez GeneID	<a href="#">11315</a>
Protein Accession#	<a href="#">NP_009193</a>
Gene Name	PARK7
Gene Alias	DJ-1, DJ1, FLJ27376, FLJ34360, FLJ92274
Gene Description	Parkinson disease (autosomal recessive, early onset) 7
Omim ID	<a href="#">602533</a> <a href="#">606324</a>
Gene Ontology	<a href="#">Hyperlink</a>
Gene Summary	The product of this gene belongs to the peptidase C56 family of proteins. It acts as a positive regulator of androgen receptor-dependent transcription. It may also function as a redox-sensitive chaperone, as a sensor for oxidative stress, and it apparently protects neurons against oxidative stress and cell death. Defects in this gene are the cause of autosomal recessive early-onset Parkinson disease 7. Two transcript variants encoding the same protein have been identified for this gene. [provided by RefSeq]
Other Designations	OTTHUMP00000001348 OTTHUMP00000001349 OTTHUMP00000001350 OTTHUMP00000001351 Parkinson disease protein 7 oncogene DJ1 protein DJ-1

## Publication Reference

- [Differential transport and local translation of cytoskeletal, injury-response, and neurodegeneration protein mRNAs in axons.](#)

Willis D, Li KW, Zheng JQ, Chang JH, Smit A, Kelly T, Merianda TT, Sylvester J, van Minnen J, Twiss JL.

The Journal of Neuroscience 2005 Jan; 25(4):778.

## Disease

- [Alzheimer disease](#)
- [Chromosome Disorders](#)
- [Dementia](#)
- [Disease Progression](#)
- [Genetic Predisposition to Disease](#)
- [Lewy Body Disease](#)
- [Parkinson disease](#)
- [Parkinsonian Disorders](#)