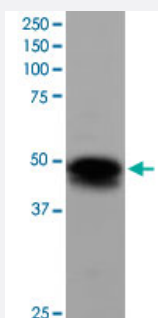


# FLOT1 polyclonal antibody

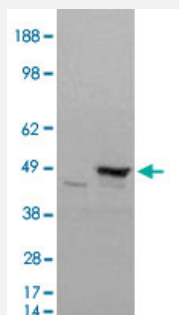
Catalog # PAB6176      Size 100 ug

## Applications



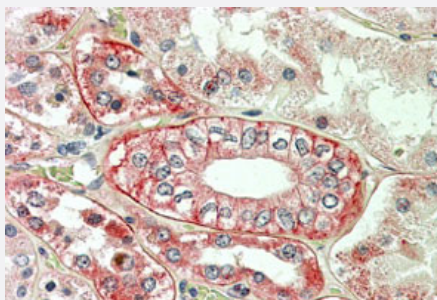
### Western Blot (Cell lysate)

FLOT1 polyclonal antibody (Cat # PAB6176) staining (0.3 ug/mL) of NCI-H460 lysate (RIPA buffer, 35 ug total protein per lane). Primary incubated for 1 hour. Detected by western blot using chemiluminescence.



### Western Blot (Transfected lysate)

HEK293 overexpressing FLOT1 and probed with FLOT1 polyclonal antibody (Cat # PAB6176) (mock transfection in first lane), tested by Origene.



### Immunohistochemistry (Formalin/PFA-fixed paraffin-embedded sections)

Immunohistochemical staining of human kidney with FLOT1 polyclonal antibody (Cat # PAB6176) (3.8 ug/mL). Steamed antigen retrieval with citrate buffer pH 6, AP-staining.

## Specification

### Product Description

Goat polyclonal antibody raised against synthetic peptide of FLOT1.

### Immunogen

A synthetic peptide corresponding to human FLOT1.

Sequence	C-SISQVNHKPLRTA
Host	Goat
Theoretical MW (kDa)	47.4
Reactivity	Human
Form	Liquid
Purification	Antigen affinity purification
Concentration	0.5 mg/mL
Quality Control Testing	Antibody Reactive Against Synthetic Peptide.
Recommend Usage	ELISA (1:32000) Immunohistochemistry (5 ug/mL) Western Blot (0.1-0.3 ug/mL) The optimal working dilution should be determined by the end user.
Storage Buffer	In Tris saline, pH 7.3 (0.5% BSA, 0.02% sodium azide)
Storage Instruction	Store at -20°C. Aliquot to avoid repeated freezing and thawing.
Note	This product contains sodium azide: a POISONOUS AND HAZARDOUS SUBSTANCE which should be handled by trained staff only.

## Applications

- Western Blot (Cell lysate)

FLOT1 polyclonal antibody (Cat # PAB6176) staining (0.3 ug/mL) of NCI-H460 lysate (RIPA buffer, 35 ug total protein per lane). Primary incubated for 1 hour. Detected by western blot using chemiluminescence.

- Western Blot (Transfected lysate)

HEK293 overexpressing FLOT1 and probed with FLOT1 polyclonal antibody (Cat # PAB6176) (mock transfection in first lane), tested by Origene.

- Immunohistochemistry (Formalin/PFA-fixed paraffin-embedded sections)

Immunohistochemical staining of human kidney with FLOT1 polyclonal antibody (Cat # PAB6176) (3.8 ug/mL). Steamed antigen retrieval with citrate buffer pH 6, AP-staining.

- Enzyme-linked Immunoabsorbent Assay

## Gene Info — FLOT1

Entrez GeneID [10211](#)

Protein Accession# [NP\\_005794](#)

Gene Name FLOT1

Gene Alias -

Gene Description flotillin 1

Omim ID [606998](#)

Gene Ontology [Hyperlink](#)

**Gene Summary** Caveolae are small domains on the inner cell membrane involved in vesicular trafficking and signal transduction. FLOT1 encodes a caveolae-associated, integral membrane protein. The function of flotillin 1 has not been determined. [provided by RefSeq]

**Other Designations** OTTHUMP00000029208|integral membrane component of caveolae

## Publication Reference

- [Acute ethanol treatment modulates Toll-like receptor-4 association with lipid rafts.](#)

Dolganiuc A, Bakis G, Kodys K, Mandrekar P, Szabo G.

Alcoholism, Clinical and Experimental Research 2006 Jan; 30(1):76.

Application: WB-Ce, Mouse, CHO cells

## Pathway

- [Insulin signaling pathway](#)

## Disease

- [Genetic Predisposition to Disease](#)

- [Lupus Erythematosus](#)