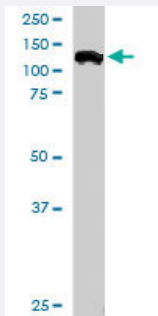


# SMARCA3 polyclonal antibody

Catalog # PAB6172

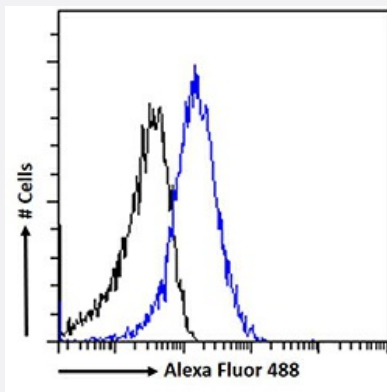
Size 100 ug

## Applications



### Western Blot (Cell lysate)

SMARCA3 polyclonal antibody (Cat # PAB6172) staining (0.5 ug/mL) of Jurkat lysate (RIPA buffer, 30 ug total protein per lane). Primary incubated for 1 hour. Detected by western blot using chemiluminescence.



### Flow Cytometry

SMARCA3 polyclonal antibody (Cat # PAB6172) Flow cytometric analysis of paraformaldehyde fixed A431 cells (blue line), permeabilized with 0.5% Triton. Primary incubation 1hr (10 ug/mL) followed by Alexa Fluor 488 secondary antibody (1 ug/mL). IgG control: Unimmunized goat IgG (black line) followed by Alexa Fluor 488 secondary antibody.

## Specification

Product Description	Goat polyclonal antibody raised against synthetic peptide of SMARCA3.
Immunogen	A synthetic peptide corresponding to human SMARCA3.
Sequence	C-KQAKINEIRTLIDL
Host	Goat
Theoretical MW (kDa)	114
Reactivity	Human

<b>Specificity</b>	NP_003062.2 and NP_620636.2 are variants that represent the same protein.
<b>Form</b>	Liquid
<b>Purification</b>	Antigen affinity purification
<b>Concentration</b>	0.5 mg/mL
<b>Quality Control Testing</b>	Antibody Reactive Against Synthetic Peptide.
<b>Recommend Usage</b>	ELISA (1:16000) Flow Cytometry (10 ug/mL) Western blot (0.2-1 ug/mL) The optimal working dilution should be determined by the end user.
<b>Storage Buffer</b>	In Tris saline, pH 7.3 (0.5% BSA, 0.02% sodium azide)
<b>Storage Instruction</b>	Store at -20°C. Aliquot to avoid repeated freezing and thawing.
<b>Note</b>	This product contains sodium azide: a POISONOUS AND HAZARDOUS SUBSTANCE which should be handled by trained staff only.

## Applications

- Western Blot (Cell lysate)

SMARCA3 polyclonal antibody (Cat # PAB6172) staining (0.5 ug/mL) of Jurkat lysate (RIPA buffer, 30 ug total protein per lane). Primary incubated for 1 hour. Detected by western blot using chemiluminescence.

- Enzyme-linked Immunoabsorbent Assay

- Flow Cytometry

SMARCA3 polyclonal antibody (Cat # PAB6172) Flow cytometric analysis of paraformaldehyde fixed A431 cells (blue line), permeabilized with 0.5% Triton. Primary incubation 1hr (10 ug/mL) followed by Alexa Fluor 488 secondary antibody (1 ug/mL). IgG control: Unimmunized goat IgG (black line) followed by Alexa Fluor 488 secondary antibody.

## Gene Info — HLTF

<b>Entrez GeneID</b>	<a href="#">6596</a>
<b>Protein Accession#</b>	<a href="#">NP_003062.2;NP_620636.1</a>
<b>Gene Name</b>	HLTF
<b>Gene Alias</b>	HIP116, HIP116A, HLTF1, RNF80, SMARCA3, SNF2L3, ZBU1

Gene Description	helicase-like transcription factor
Omim ID	<a href="#">603257</a>
Gene Ontology	<a href="#">Hyperlink</a>
Gene Summary	This gene encodes a member of the SWI/SNF family. Members of this family have helicase and ATPase activities and are thought to regulate transcription of certain genes by altering the chromatin structure around those genes. The encoded protein contains a RING finger DNA binding motif. Two transcript variants encoding the same protein have been found for this gene. However, use of an alternative translation start site produces an isoform that is truncated at the N-terminus compared to the full-length protein. [provided by RefSeq]
Other Designations	DNA-binding protein/plasminogen activator inhibitor-1 regulator SNF2-like 3 SWI/SNF related, matrix associated, actin dependent regulator of chromatin, subfamily a, member 3 sucrose nonfermenting-like 3

## Publication Reference

- [Cloning of an SNF2/SWI2-related protein that binds specifically to the SPH motifs of the SV40 enhancer and to the HIV-1 promoter.](#)

Sheridan PL, Schorpp M, Voz ML, Jones KA.

The Journal of Biological Chemistry 1995 Mar; 270(9):4575.

Application: IP, WB-Ce, Human, HeLa cells