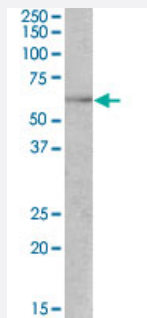


TFEB polyclonal antibody

Catalog # PAB6161 Size 100 ug

Applications



Western Blot (Tissue lysate)

TFEB polyclonal antibody (Cat # PAB6161)(0.5 ug/mL) staining of human thymus lysate (35 ug protein in RIPA buffer). Primary incubation was 1 hour. Detected by chemiluminescence.

Specification

Product Description	Goat polyclonal antibody raised against synthetic peptide of TFEB.
Immunogen	A synthetic peptide corresponding to N-terminus of human TFEB.
Sequence	ASRIGLRMQLMRE-C
Host	Goat
Theoretical MW (kDa)	52.9
Reactivity	Human
Form	Liquid
Purification	Antigen affinity purification
Concentration	0.5 mg/mL
Recommend Usage	ELISA (1:16000) Western blot (0.5-1.5 ug/mL) The optimal working dilution should be determined by the end user.
Storage Buffer	In Tris saline, pH 7.3 (0.5% BSA, 0.02% sodium azide)

Storage Instruction

Store at -20°C.
Aliquot to avoid repeated freezing and thawing.

Note

This product contains sodium azide: a POISONOUS AND HAZARDOUS SUBSTANCE which should be handled by trained staff only.

Applications

- ChIP

- Western Blot (Tissue lysate)

TFEB polyclonal antibody (Cat # PAB6161)(0.5 ug/mL) staining of human thymus lysate (35 ug protein in RIPA buffer). Primary incubation was 1 hour. Detected by chemiluminescence.

- Immunohistochemistry (Formalin/PFA-fixed paraffin-embedded sections)

- Enzyme-linked Immunoabsorbent Assay

Gene Info — TFEB

Entrez GeneID[7942](#)**Protein Accession#**[NP_009093.1](#)**Gene Name**

TFEB

Gene Alias

AlphaTFEB, TCFEB, bHLHe35

Gene Description

transcription factor EB

Omim ID[600744](#)**Gene Ontology**[Hyperlink](#)**Other Designations**

OTTHUMP00000043540|OTTHUMP00000043542|OTTHUMP00000071327|T-cell transcription factor EB

Publication Reference

- [Renal carcinoma-associated transcription factors TFE3 and TFEB are leukemia inhibitory factor-responsive transcription activators of E-cadherin.](#)

Huan C, Sashital D, Hailemariam T, Kelly ML, Roman CA.

The Journal of Biological Chemistry 2005 Aug; 280(34):30225.

Application: ChIP, WB-Ce, WB-Tr, Human, Mouse, 3T3, mIMCD-3, MEF, MEF TFE3-/-, HEK293 cells