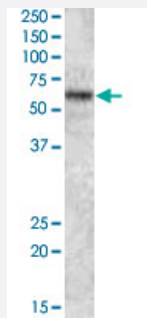


TFE3 polyclonal antibody

Catalog # PAB6160 Size 100 ug

Applications



Western Blot (Cell lysate)

TFE3 polyclonal antibody (Cat # PAB6160)(1 ug/ml) staining of HEK293 lysate (35 ug protein in RIPA buffer). Primary incubation was 1 hour. Detected by chemiluminescence.

Specification

Product Description	Goat polyclonal antibody raised against synthetic peptide of TFE3.
Immunogen	A synthetic peptide corresponding to N-terminus of human TFE3.
Sequence	SHAAEPARDGVEAS-C
Host	Goat
Theoretical MW (kDa)	61.5
Reactivity	Human
Form	Liquid
Purification	Antigen affinity purification
Concentration	0.5 mg/mL
Recommend Usage	ELISA (1:32000) Western blot (1-3 ug/mL) The optimal working dilution should be determined by the end user.
Storage Buffer	In Tris saline, pH 7.3 (0.5% BSA, 0.02% sodium azide)

Storage Instruction

Store at -20°C.
Aliquot to avoid repeated freezing and thawing.

Note

This product contains sodium azide: a POISONOUS AND HAZARDOUS SUBSTANCE which should be handled by trained staff only.

Applications

- Western Blot (Cell lysate)

TFE3 polyclonal antibody (Cat # PAB6160)(1 ug/ml) staining of HEK293 lysate (35 ug protein in RIPA buffer). Primary incubation was 1 hour. Detected by chemiluminescence.

- Enzyme-linked Immunoabsorbent Assay

Gene Info — TFE3

Entrez GeneID[7030](#)**Protein Accession#**[NP_006512.2](#)**Gene Name**

TFE3

Gene Alias

RCCP2, TFEA, bHLHe33

Gene Description

transcription factor binding to IGHM enhancer 3

Omim ID[314310 605074](#)**Gene Ontology**[Hyperlink](#)**Gene Summary**

TFE3, a member of the helix-loop-helix family of transcription factors, binds to the mu-E3 motif of the immunoglobulin heavy-chain enhancer and is expressed in many cell types (Henthorn et al., 1991 [PubMed 1685140]).[supplied by OMIM]

Other Designations

OTTHUMP00000024272|Renal cell carcinoma, papillary|Transcription factor for IgH enhancer|transcription factor E family, member A|transcription factor E3

Publication Reference

- [The gene encoding human TFE3, a transcription factor that binds the immunoglobulin heavy-chain enhancer, maps to Xp11.22.](#)

Henthorn PS, Stewart CC, Kadesch T, Puck JM.

Genomics 1991 Oct; 11(2):374.

Disease

- [Disease Progression](#)
- [Disease Susceptibility](#)
- [HIV Infections](#)