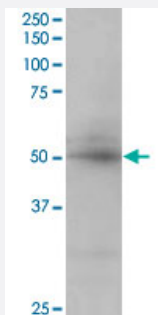


CREB3L4 polyclonal antibody

Catalog # PAB6144

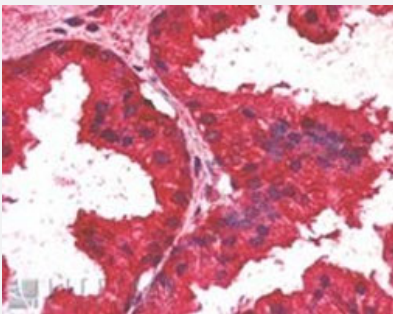
Size 100 ug

Applications



Western Blot (Tissue lysate)

CREB3L4 polyclonal antibody (Cat # PAB6144) staining (0.5 ug/mL) of human placenta lysate (RIPA buffer, 35 ug total protein per lane). Primary incubated for 1 hour. Detected by western blot using chemiluminescence.



Immunohistochemistry (Formalin/PFA-fixed paraffin-embedded sections)

CREB3L4 polyclonal antibody (Cat # PAB6144, 2.5 ug/mL) staining of paraffin embedded human prostate. Steamed antigen retrieval with citrate buffer pH 6, AP-staining.

Specification

Product Description	Goat polyclonal antibody raised against synthetic peptide of CREB3L4.
Immunogen	A synthetic peptide corresponding to human CREB3L4.
Sequence	C-PSGRIRSVLHADEM
Host	Goat
Theoretical MW (kDa)	43.4
Reactivity	Human
Form	Liquid

Purification	Antigen affinity purification
Concentration	0.5 mg/mL
Quality Control Testing	Antibody Reactive Against Synthetic Peptide.
Recommend Usage	ELISA (1:32000) Western blot (0.5-2 ug/mL) Immunohistochemistry (Formalin/PFA-fixed paraffin-embedded sections) (2-4 ug/mL) The optimal working dilution should be determined by the end user.
Storage Buffer	In Tris saline, pH 7.3 (0.5% BSA, 0.02% sodium azide)
Storage Instruction	Store at -20°C. Aliquot to avoid repeated freezing and thawing.
Note	This product contains sodium azide: a POISONOUS AND HAZARDOUS SUBSTANCE which should be handled by trained staff only.

Applications

- Western Blot (Tissue lysate)

CREB3L4 polyclonal antibody (Cat # PAB6144) staining (0.5 ug/mL) of human placenta lysate (RIPA buffer, 35 ug total protein per lane). Primary incubated for 1 hour. Detected by western blot using chemiluminescence.

- Immunohistochemistry (Formalin/PFA-fixed paraffin-embedded sections)

CREB3L4 polyclonal antibody (Cat # PAB6144, 2.5 ug/mL) staining of paraffin embedded human prostate. Steamed antigen retrieval with citrate buffer pH 6, AP-staining.

- Enzyme-linked Immunoabsorbent Assay

Gene Info — CREB3L4

Entrez GeneID	148327
Protein Accession#	NP_570968
Gene Name	CREB3L4
Gene Alias	AIBZIP, ATCE1, CREB3, CREB4, JAL, hJAL
Gene Description	cAMP responsive element binding protein 3-like 4
Omim ID	607138

Gene Ontology

[Hyperlink](#)

Gene Summary

cAMP response element-binding (CREB) proteins are a family of mammalian transcription activators. For further background information on CREB proteins, see CREB1 (MIM 123810).[supplied by OMIM]

Other Designations

OTTHUMP00000035264|OTTHUMP00000035265|OTTHUMP00000035266|androgen-induced basic leucine zipper|cAMP responsive element binding protein 1

Publication Reference

- [AlbZIP, a novel bZIP gene located on chromosome 1q21.3 that is highly expressed in prostate tumors and of which the expression is up-regulated by androgens in LNCaP human prostate cancer cells.](#)

Qi H, Fillion C, Labrie Y, Grenier J, Fournier A, Berger L, El-Alfy M, Labrie C.

Cancer Research 2002 Feb; 62(3):721.

Application: IHC-P, WB-Ce, Human, LNCaP, BT-474, MDA-MB-231 cells, Prostate

Pathway

- [Melanogenesis](#)
- [Prostate cancer](#)